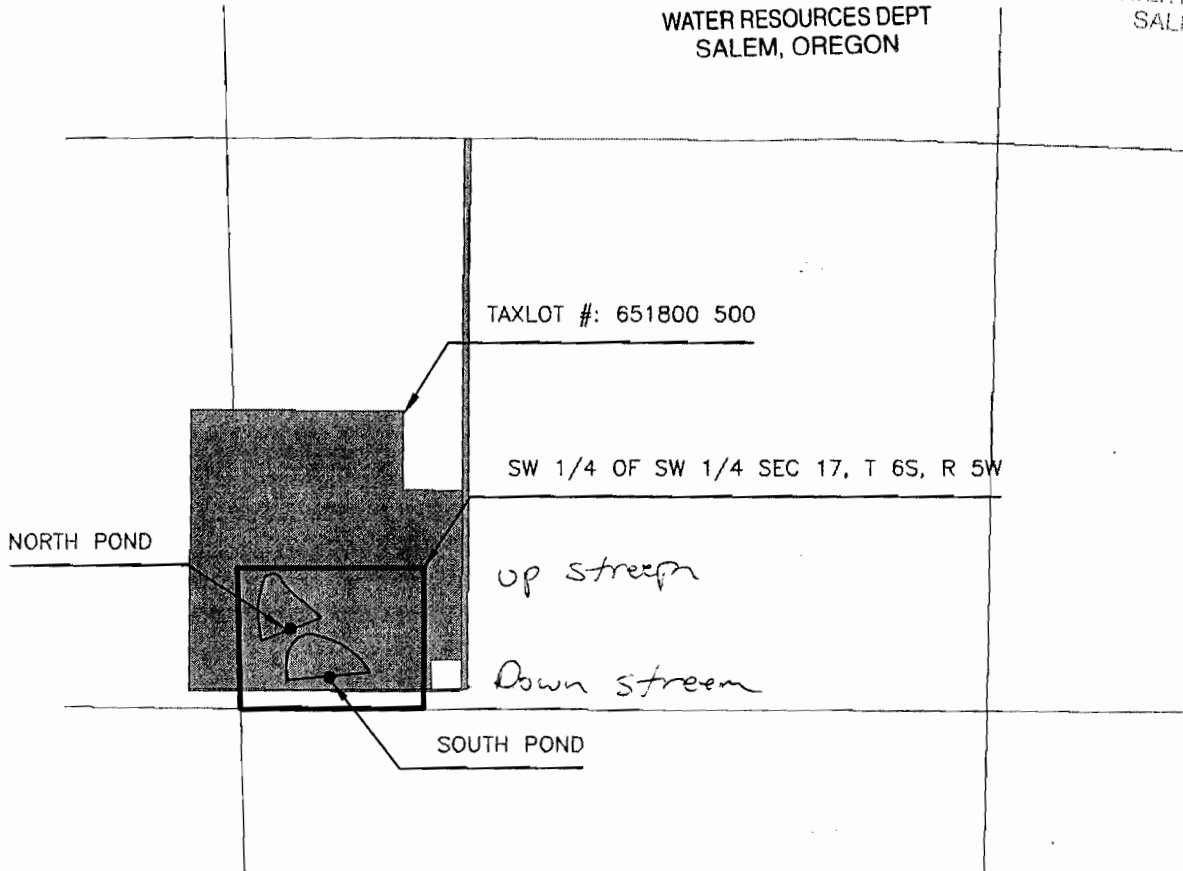


RECEIVED

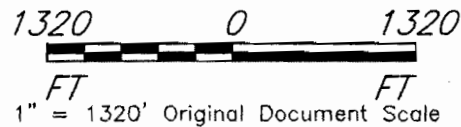
MAR 18 2008  
WATER RESOURCES DEPT  
SALEM, OREGON

RECEIVED

APR 20 2006  
WATER RESOURCES DEPT  
SALEM, OREGON



### MAXSON - DUCK PONDS



SOUTH POND is 660 ft east and 260 ft north of SW corner of section 17, T 6S, R5W, WM  
 NORTH POND is 370 ft east and 590 ft north of SW corner of section 17, T 6S, R5W, WM

Designed: CMS	DATE: 4/06	File Name:	<b>MAXSON</b> <b>DUCK PONDS - LOCATION MAP</b> POLK COUNTY, OREGON
Drawn:		Drawing No.:	
Checked:		SHEET 1 OF 1	
Approved:	<b>U.S.D.A. NATURAL RESOURCES CONSERVATION SERVICE</b>		

APP NO R 86577 Permit no R-14297 APP No R 87128

IMPORTANT  
This Map for Assessment  
and Taxation Purposes  
ONLY

SEC.17 T6S R5W WM  
POLK COUNTY

Scale 1" = 400'

6.5.17

RECEIVED

APR 20 2006

WATER RESOURCES DEPT  
SALEM OREGON

See Map 6.5.8

N.E. CORNER  
JOHN MARTIN  
D.L.C. NO. 52

N.W. CORNER  
JOSEPH DOWNER  
D.L.C. NO. 51

S.E. CORNER  
ISAAC BALL  
D.L.C. NO. 38

S.W. COR.  
ANDREW DAVIDSON  
D.L.C. NO. 39

N.W. CORNER  
JOHN MARTIN  
D.L.C. NO. 52

N.E. CORNER  
JOHN MARTIN  
D.L.C. NO. 52

N.W. CORNER  
JOSEPH DOWNER  
D.L.C. NO. 51

S.E. CORNER  
ISAAC BALL  
D.L.C. NO. 38

S.W. CORNER  
ANDREW DAVIDSON  
D.L.C. NO. 39

S.W. CORNER  
D.L.C. NO. 39

S.E. CORNER  
ISAAC BALL  
D.L.C. NO. 38

8 9  
17 16

Cancelled No.

502

RECEIVED

MAR 18 2008

WATER RESOURCES DEPT  
SALEM, OREGON

45-2

21-4

See Map 6.5.18

See Map 6.5.16

See Map 6.5.20

SW 1/4  
SW 1/4

up stream

Down stream

Down stream Pond is 660 Ft east and 260 ft north  
of the SW corner of section 17

03/29/06

6.5.17