

SECTION 34 T.38S. R.5W. W. M.

JOSEPHINE COUNTY

1" = 400'

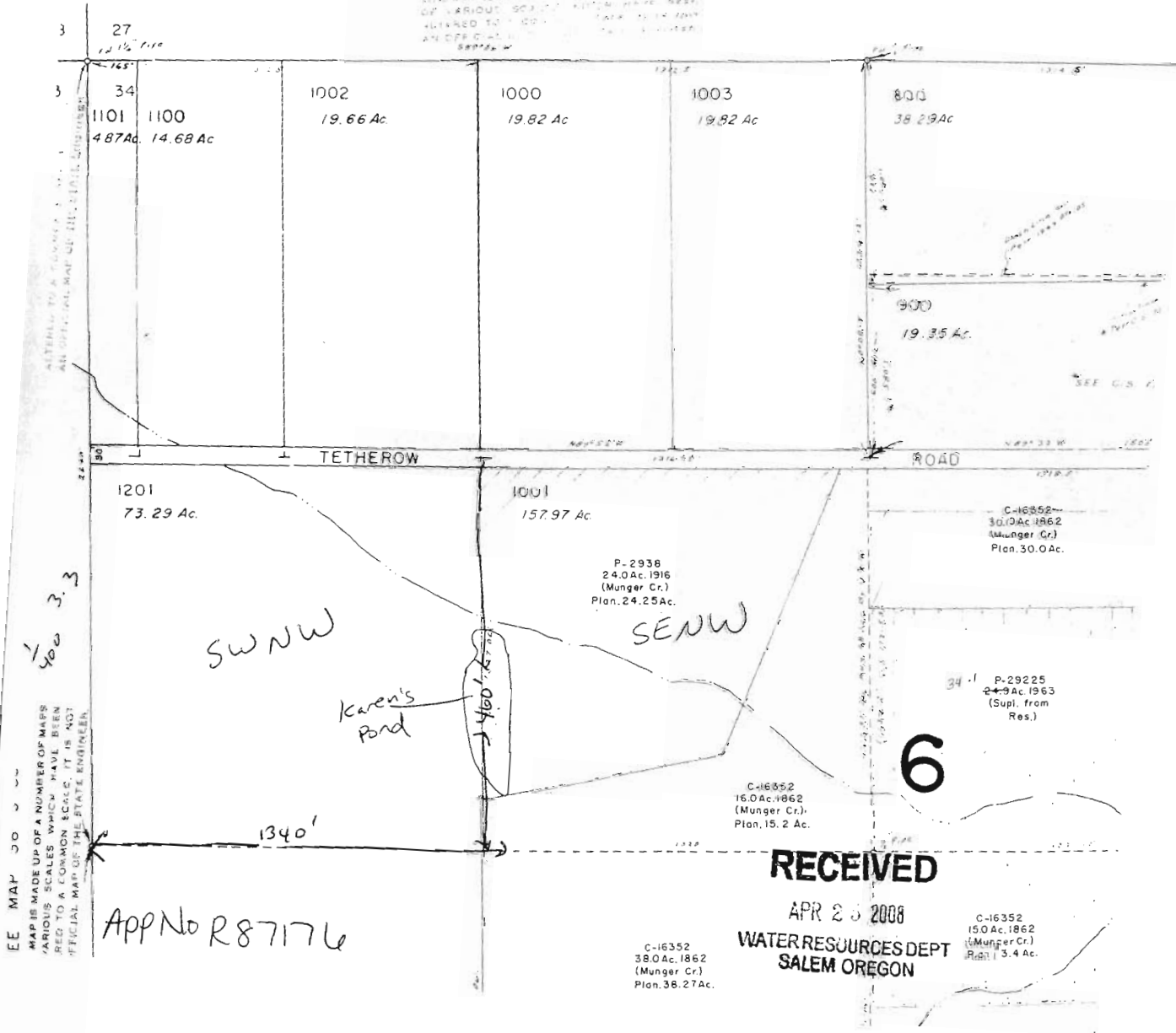


Pond is 1340' east  
and 400' north of  
west corner.

THIS MAP IS MADE UP OF A NUMBER  
OF VARIOUS SCALES WHICH HAVE  
BEEN ALTERED TO A COMMON SCALE.  
AN OFFICIAL MAP OF THE STATE.

SEE MAP 38 6 27

THIS MAP IS MADE UP OF A NUMBER OF  
VARIOUS SCALES WHICH HAVE BEEN  
ALTERED TO A COMMON SCALE.  
AN OFFICIAL MAP OF THE STATE.



EE MAP 30  
MAPS MADE UP OF A NUMBER OF MAPS  
VARIOUS SCALES WHICH HAVE BEEN  
RED TO A COMMON SCALE. IT IS NOT  
OFFICIAL MAP OF THE STATE ENGINEER.

APP No R87176

RECEIVED

APR 23 2008

WATER RESOURCES DEPT  
SALEM OREGON

C-16352  
15.0 Ac. 1862  
(Munger Cr.)  
Plan. 3.4 Ac.

C-16352  
38.0 Ac. 1862  
(Munger Cr.)  
Plan. 36.27 Ac.

P-2938  
24.0 Ac. 1916  
(Munger Cr.)  
Plan. 24.25 Ac.

C-16852  
30.0 Ac. 1862  
(Munger Cr.)  
Plan. 30.0 Ac.

34  
P-29225  
24.5 Ac. 1862  
(Supl. from  
Res.)

C-16852  
15.0 Ac. 1862  
(Munger Cr.)  
Plan. 15.2 Ac.