

RECEIVED

MAY 30 2008

WATER RESOURCES DEPT
SALEM, OREGON

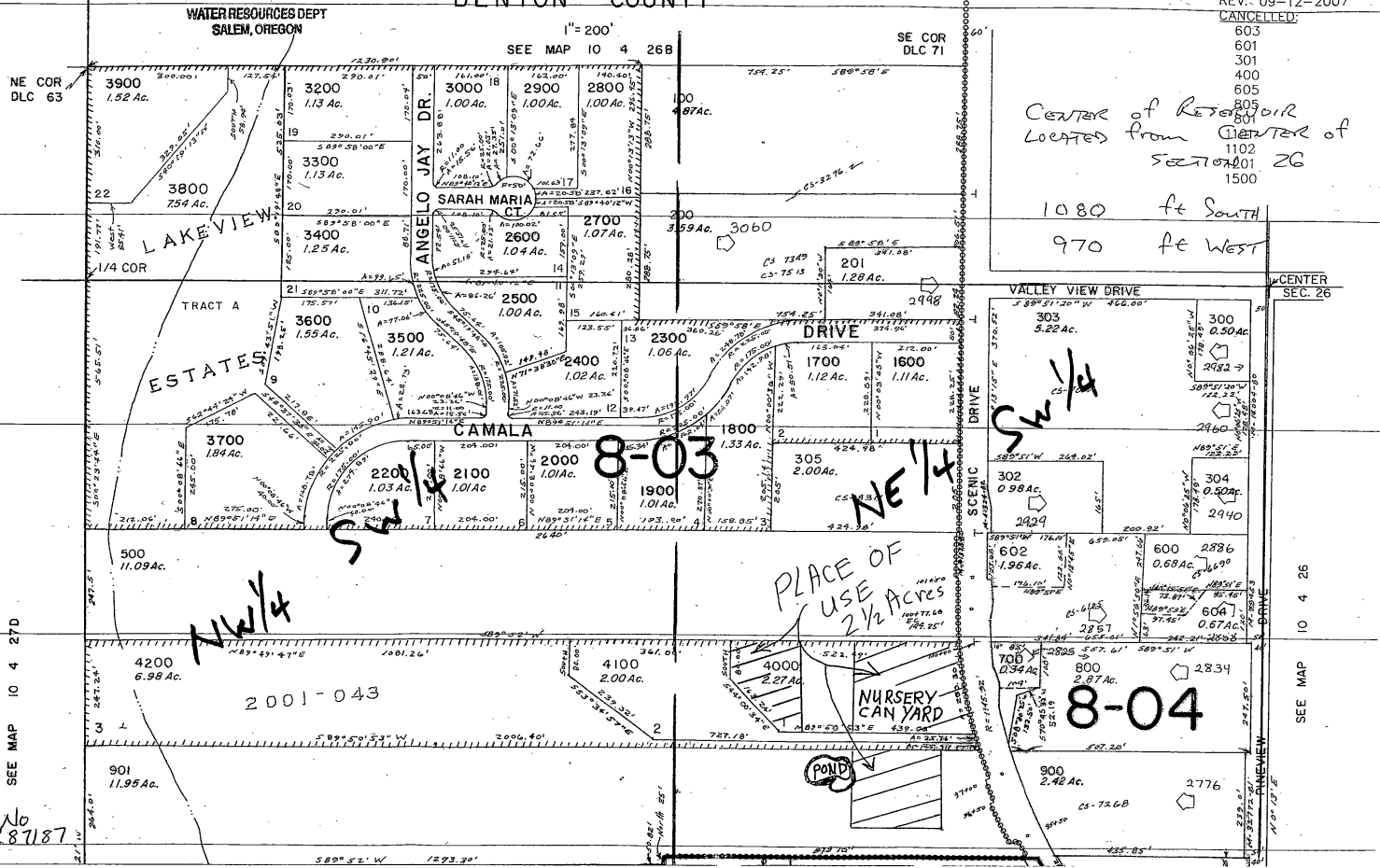
SW 1/4 SEC. 26 T.10S. R.4W. W.M.
BENTON COUNTY

THIS MAP WAS PREPARED FOR
ASSESSMENT PURPOSES ONLY

IO 4 26C

REV: 09-12-2007
CANCELLED:

- 603
- 601
- 301
- 400
- 605
- 805
- 801
- 1102
- 201
- 1500



CENTER of Reservoir
LOCATED from CENTER of
SECTION 26
1080 ft South
970 ft West

8-03

8-04

2001-043

PLACE OF
USE
2 1/2 Acres
NURSERY
CAN YARD

POND

SEE MAP IO 4 27D

SEE MAP IO 4 26

PP No
R87187