

REVISED
JUL 11 2003
WATER RESOURCES DEPT
SALEM, OREGON

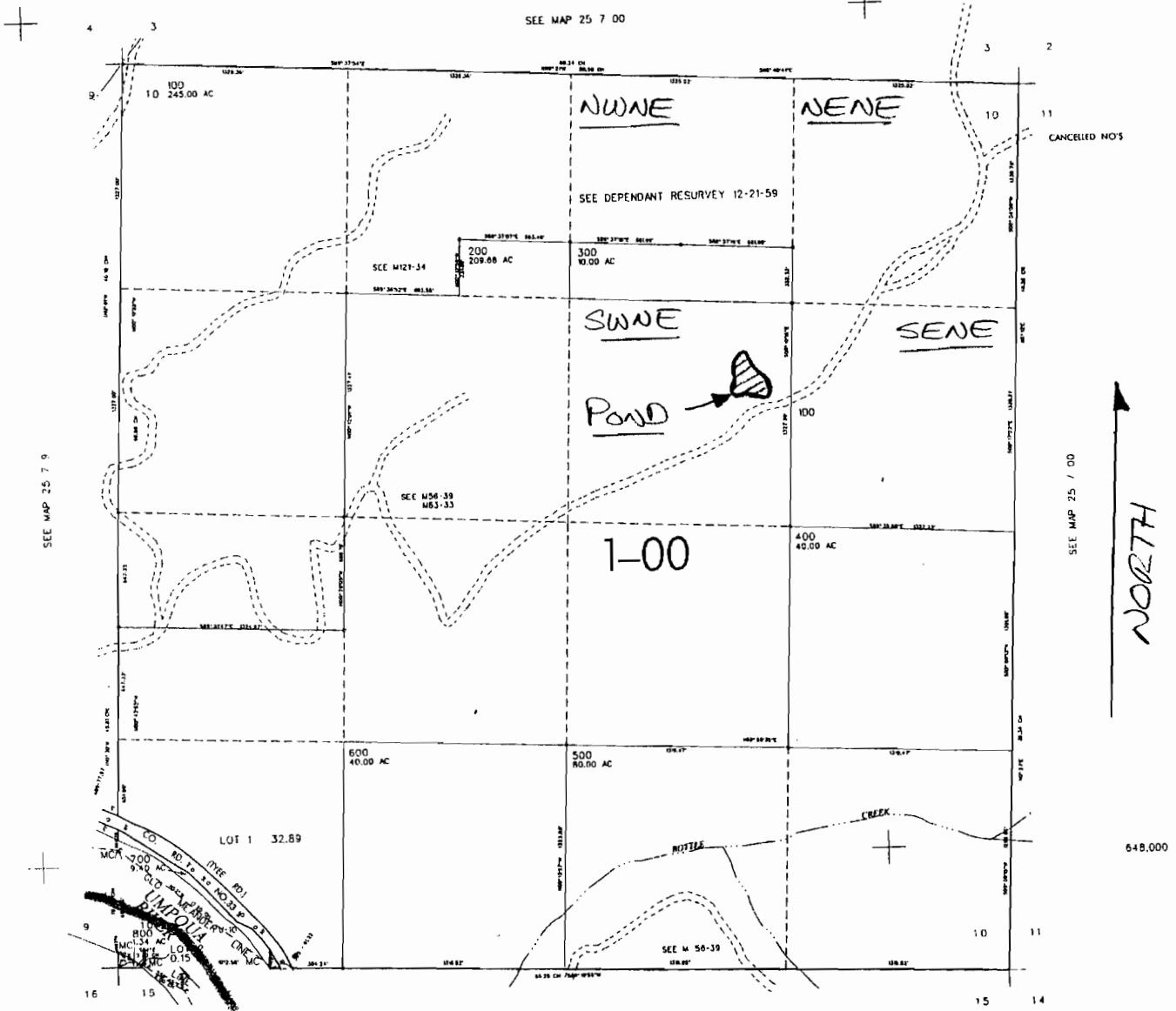
SEC. 10 T.25S. R. 7W W.M.
DOUGLAS COUNTY

25 7 10

THIS MAP WAS PREPARED FOR
ASSESSMENT PURPOSE ONLY

REVISED ON
2-18-99

SEE MAP 25 7 00



45-00

SEE MAP 25 7 15

4,122,000

25 7 10

SCALE 1" = 1000'

POND IS LOCATED 1900' SOUTH
AND 1600' WEST OF NE CORNER
SECTION 10

APP NO R-85702
PERMIT NO R-13788