

THIS MAP WAS PREPARED FOR ASSESSMENT PURPOSE ONLY

SE 1/4 SEC. 29 T28S R14W W.M.
COOS COUNTY
1" = 200'
SEE MAP 28 14 29A

28S 14W 29D

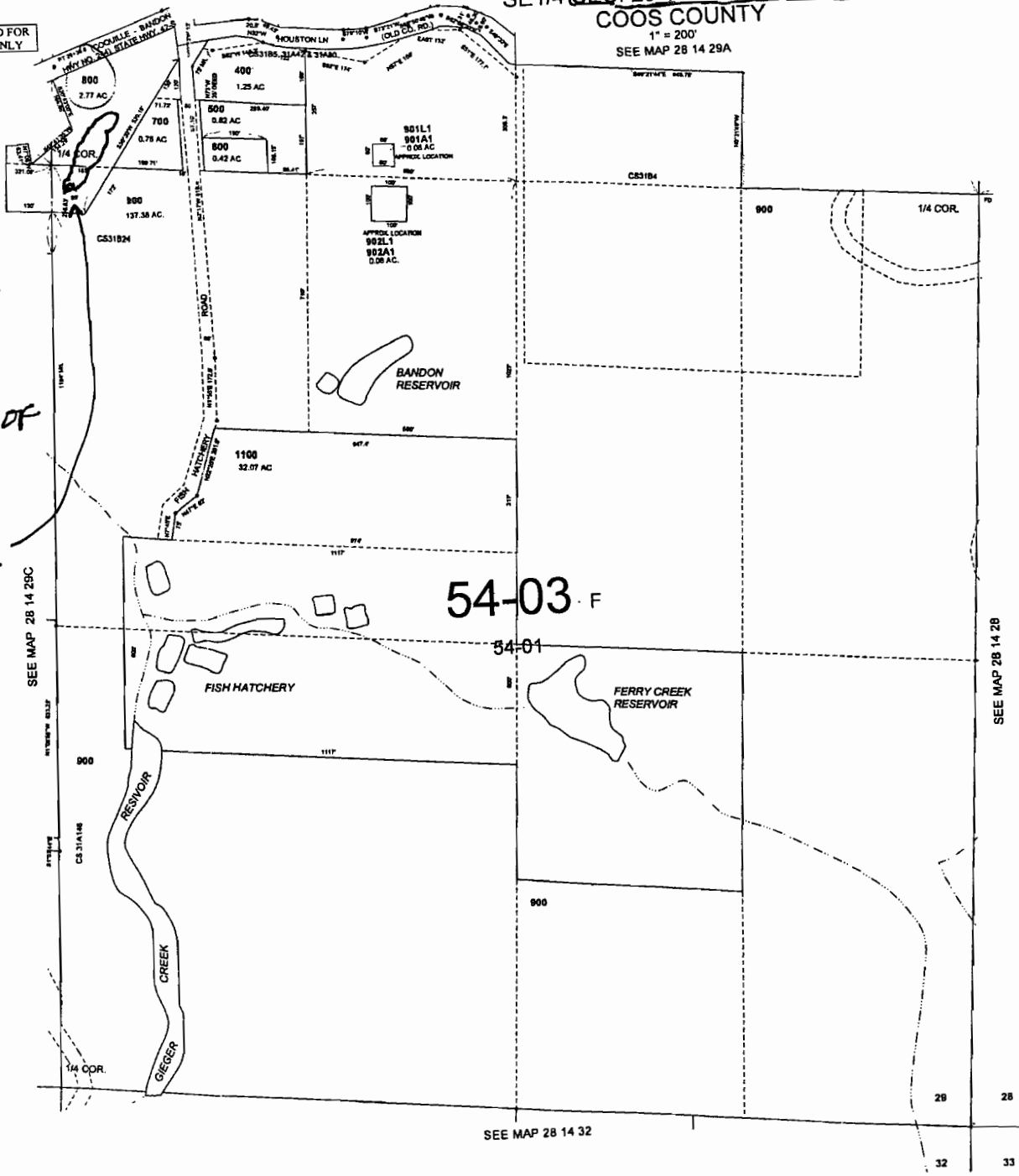
CANCELLED NO

- 1000
- 100
- 200
- 300
- 1200
- 801

POND IS 250'
EAST, AND ON
THE CENTER LINE
OF SEC. 29.

* EAST OF CENTER OF
SEC. 29.

ALL ON TL 800.



RECEIVED

APR 14 2008

WATER RESOURCES DEPT
SALEM, OREGON

App No R87143

SEE MAP 28 14 32

28 28
32 33

06-27-2007

28S 14W 29D