

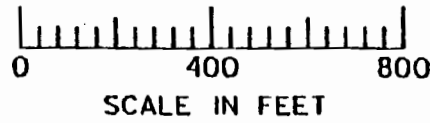
#1

Site #1 - Store Water in a Reservoir App.
Reservoir Location = 2,040' S. + 652' W. from
the North 1/4 Corner of T.5N, R.27E.,
Sec. 20 SE NW

Tax Lot = 100 Morrow Co. 1" = 400'

Discription - Natural Wetland/Pond,
5.1 ac, Max Depth - 4.5',
22.95 af

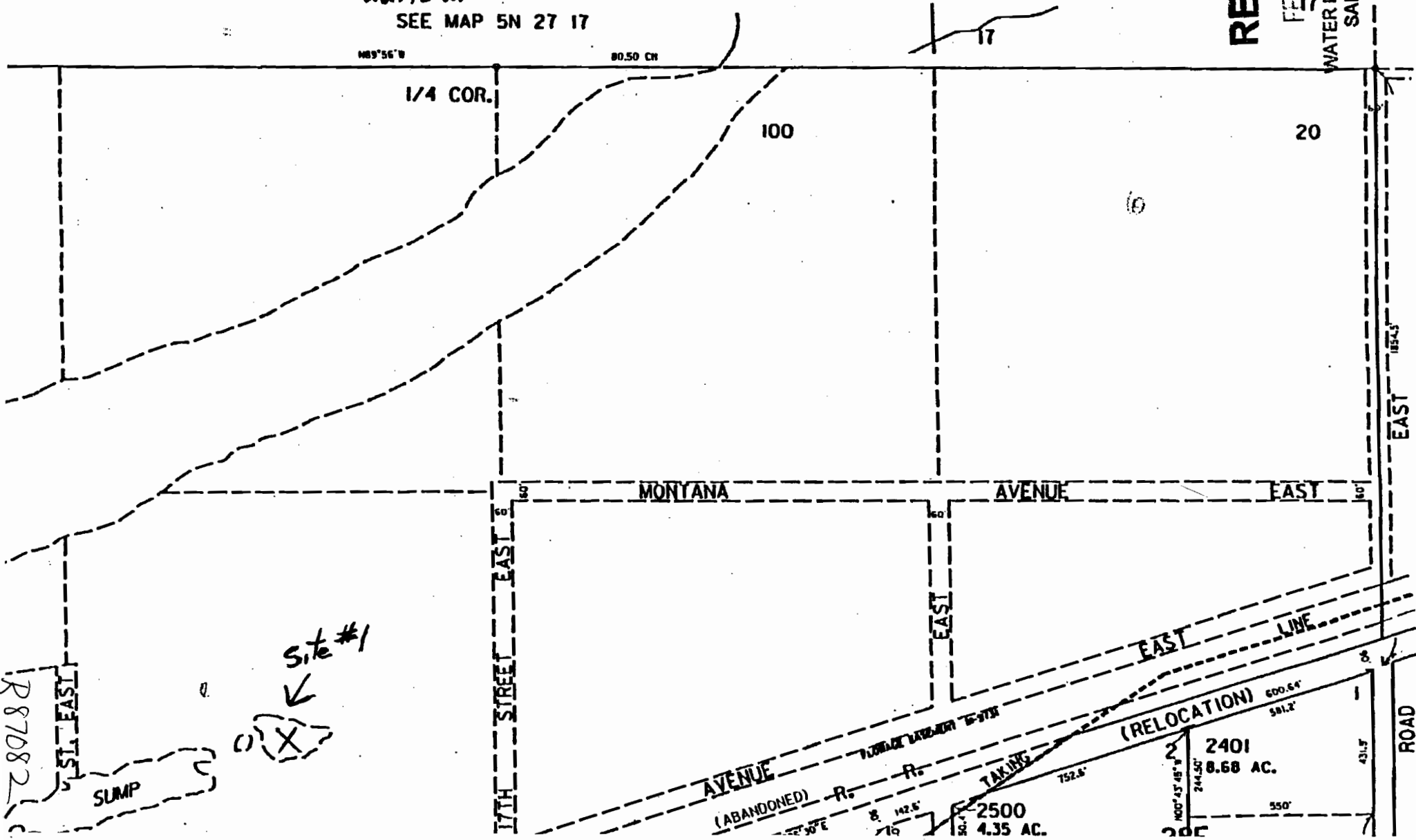
SEE MAP 5N 27 17



RECEIVED

FEB 13 2008

WATER RESOURCES DEPT
SALEM, OREGON



R 87082
151' EAST
SLUMP

Site #1
X

17TH STREET EAST
MONTANA AVENUE EAST
24TH STREET EAST
AVENUE (RELOCATION)
2500 4.35 AC.
2401 8.68 AC.
ROAD