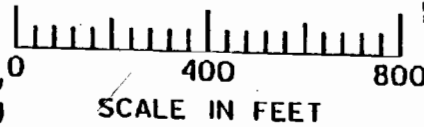


#2

Site #2 - Store Water in a Reservoir App
Reservoir location = 760' S. + 1180' W. from
the NE Corner of T.5N., R.27E., Sec 20
NE NE

Tax Lot = 100 Morrow Co
Description - Natural Wetland/Pond, 3.72 ac, Max Depth - 3',
11.16 af

1" = 400'



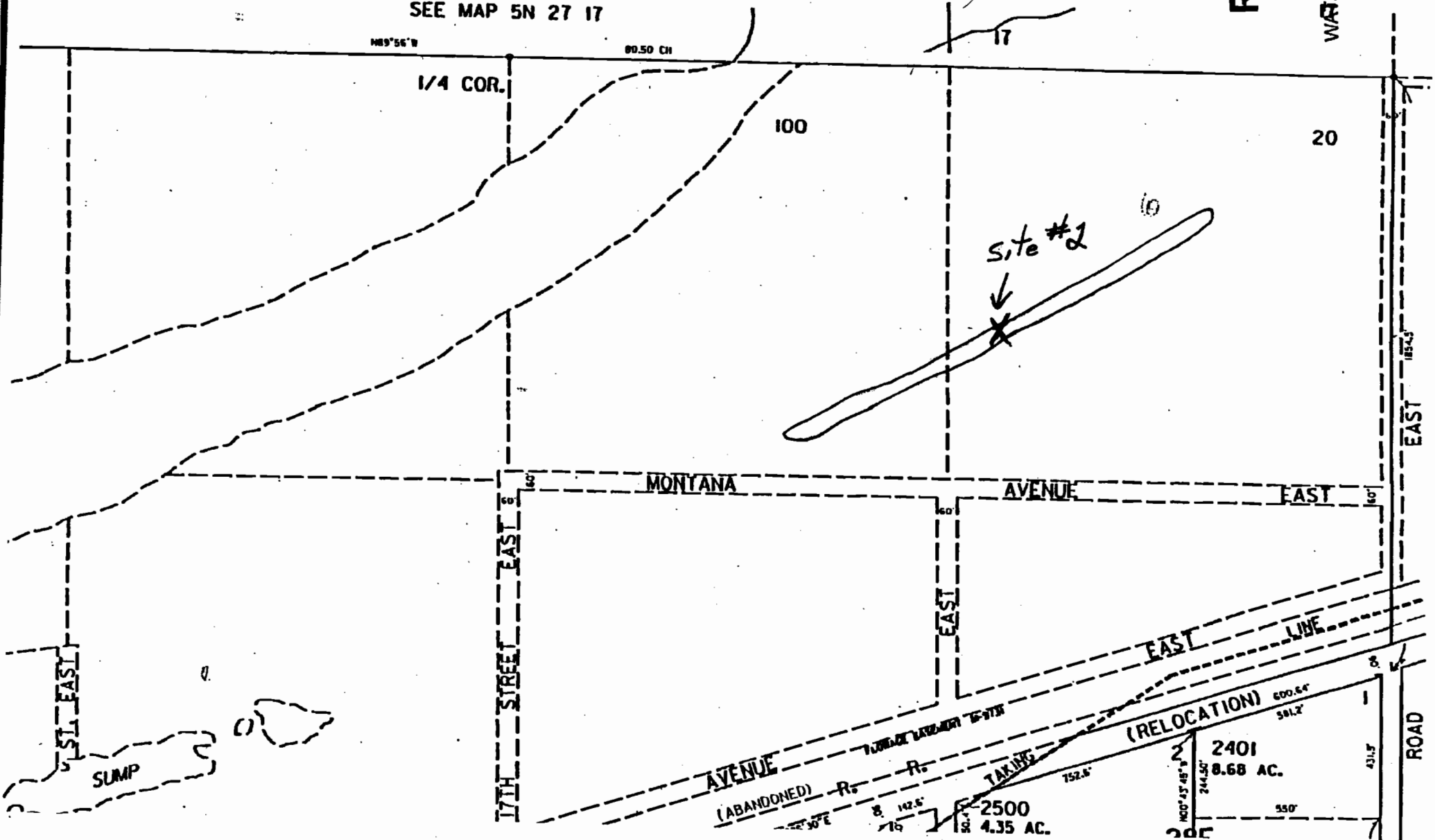
RECEIVED

FEB 13 2008

WATER RESOURCES DEPT
SALEM, OREGON

R 87083

SEE MAP 5N 27 17



N89°56'W

80.50 CH

1/4 COR.

100

20

Site #2

MONTANA AVENUE

AVENUE EAST

EAST

17TH STREET EAST

17TH STREET EAST

EAST

EAST LINE

EAST

ROAD

SUMP

AVENUE (ABANDONED)

(RELOCATION)

2401

8.68 AC.

2500

4.35 AC.

TAKING

140° 45' 48" N

244.50'

550'

205'

122° 30' E

8

142.6'

76

752.6'

600.64'

581.2'

431.5'