

SCALE IN FEET

THIS MAP WAS PREPARED FOR ASSESSMENT PURPOSE ONLY

RECEIVED

FEB 13 2008

WATER RESOURCES DEPT  
SALEM, OREGON

SECTION 21 T.5  
MORROW

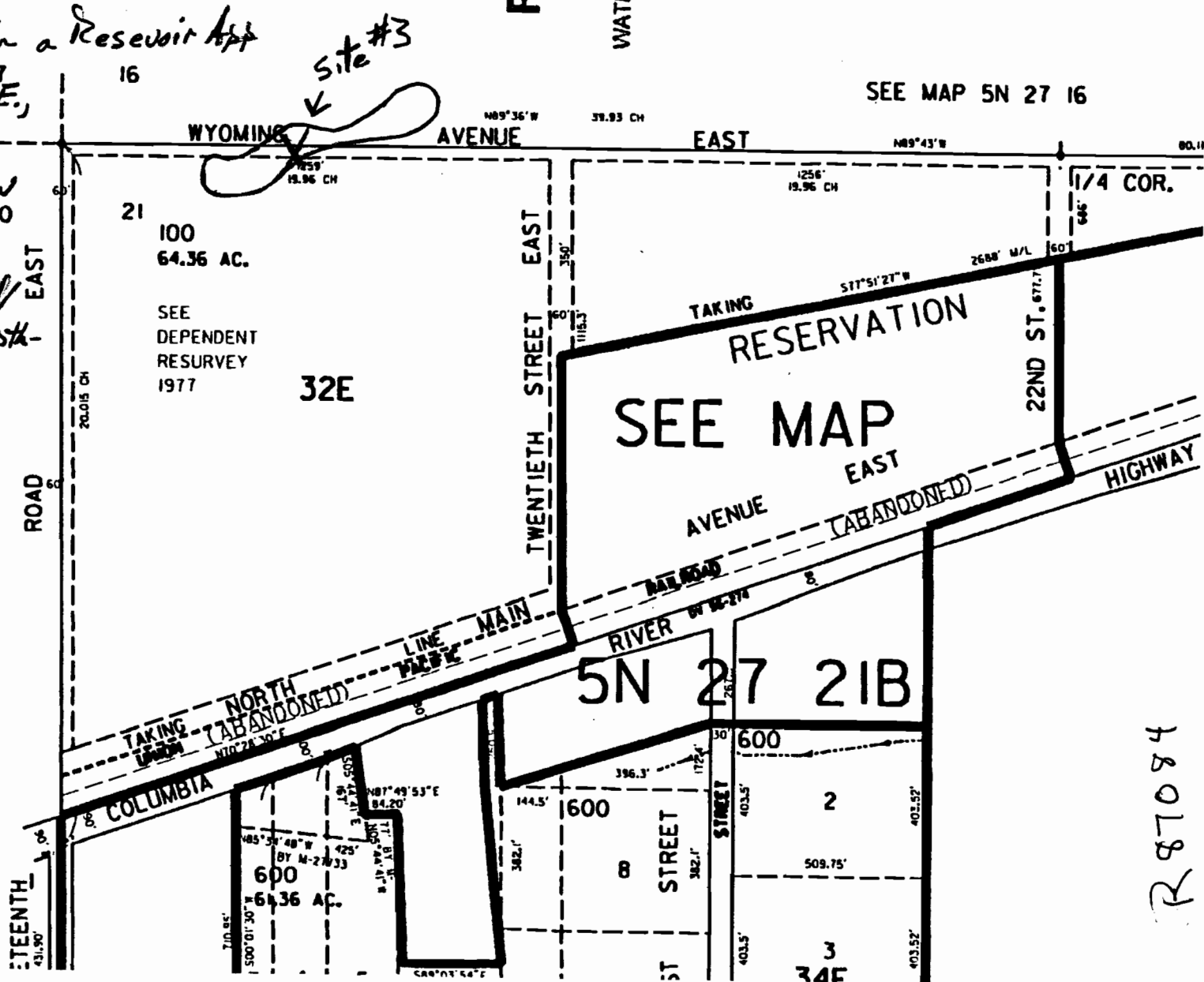
1" =

Site #3 - Store Water in a Reservoir App

Reservoir location = 715' E,  
+ 60' S. from the  
NW Corner of T.5N.,  
R.27E., Sec 21 NW NW

Tax Lot - 100 Morrow Co

Description - Natural Wetland/  
Pond, 3.18 ac, Max Depth -  
4', 12.72 af



SEE MAP 5N 27 16

site #3  
↓

SEE MAP

R 87084