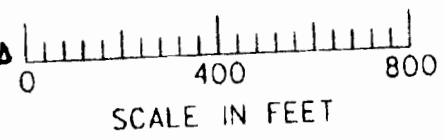
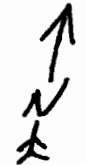


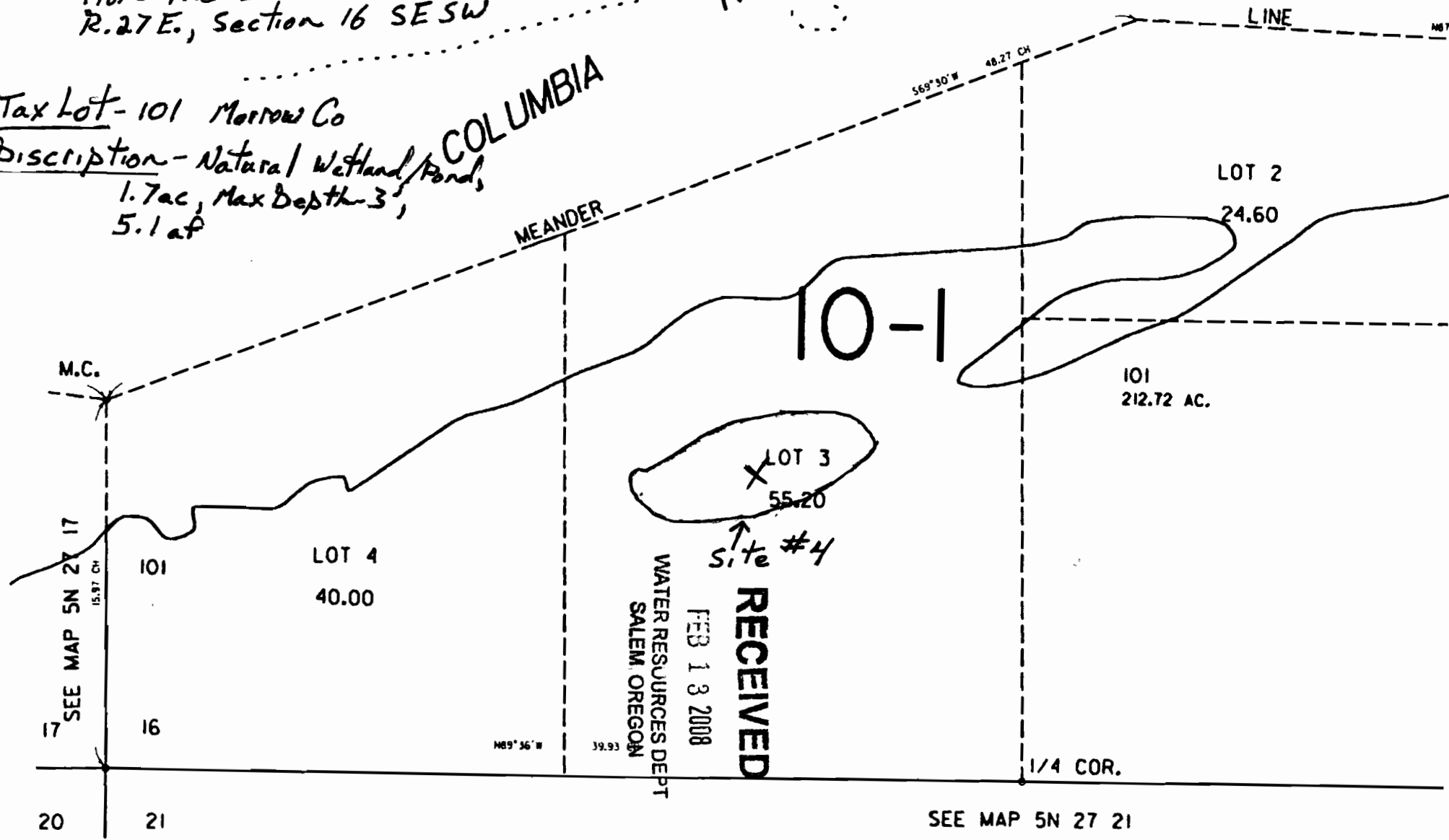
THIS MAP WAS PREPARED FOR
ASSESSMENT PURPOSE ONLY



R87085

Site #4 - Store Water in a Reservoir App
Reservoir Location = 1887' E. + 861' N.
from the SW Corner of T.5 N.,
R.27 E., Section 16 SE SW

Tax Lot - 101 Morrow Co
Description - Natural Wetland/Pond,
1.7 ac, Max Depth 3',
5.1 af



WATER RESOURCES DEPT
SALEM, OREGON
FEB 13 2008
RECEIVED

↑
Site #4