

Applicant: Rocky Younger

**POD Location:**

1) 480' North and 594' East from the SW  
Corner of Section 3, T. 3 S., R. 2 E.

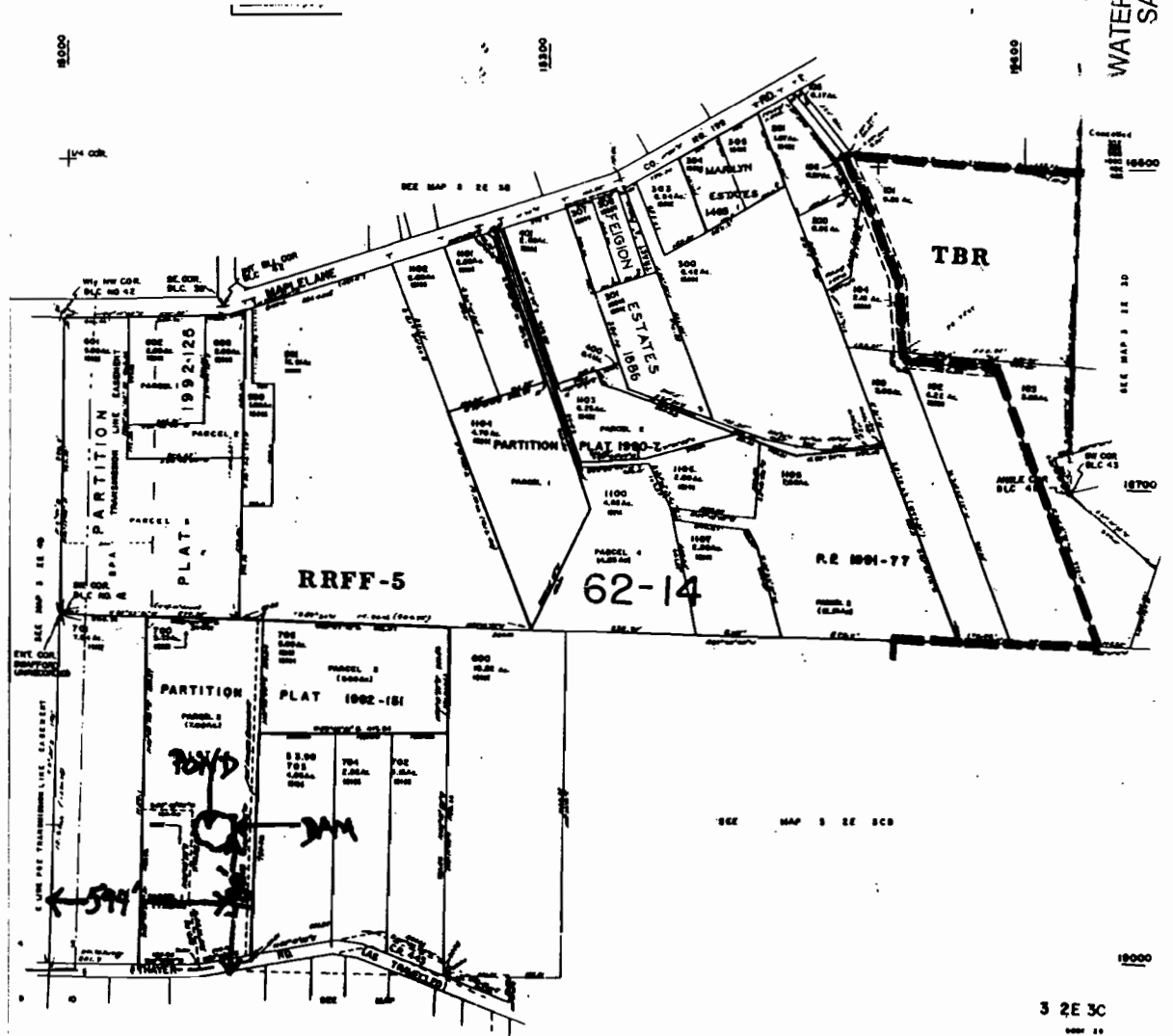
Within SW1/4 SW1/4; Tax Lot 700 (map 3C)

**SW 1/4 T. 3 S. R. 2 E. Section 3**



Scale: 1" = 600'

SW 1/4 Sec. 3 T. 3S. R. 2E.



RECEIVED

AUG 29 2008

WATER RESOURCES DEPT  
SALEM, OREGON

3 2E 3C