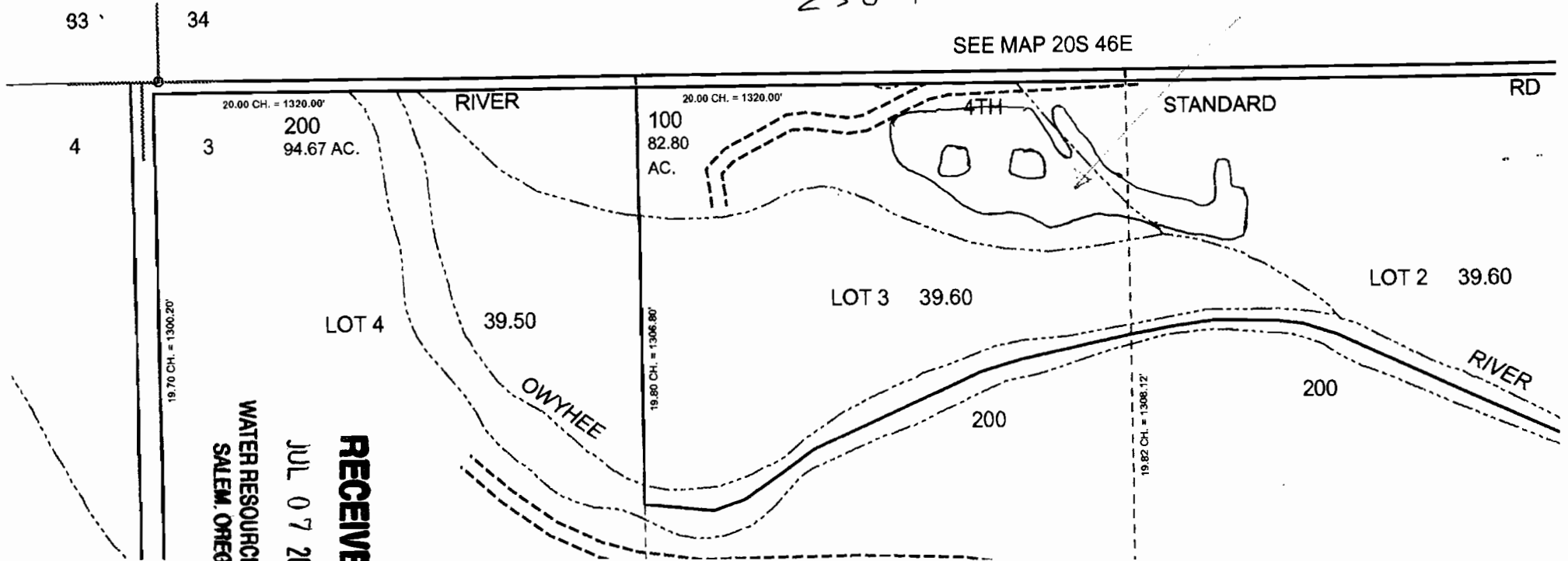


SECTION 03 T.21S. R.46E. W.M.  
MALHEUR COUNTY

1" = 400'

RESERVOIR LOCATED FROM  
NW CORNER SECTION 3  
2250 FE EAST  
250 FE SOUTH

SEE MAP 20S 46E



WATER RESOURCES DEPT  
SALEM, OREGON

JUL 07 2008

RECEIVED