

d for only.



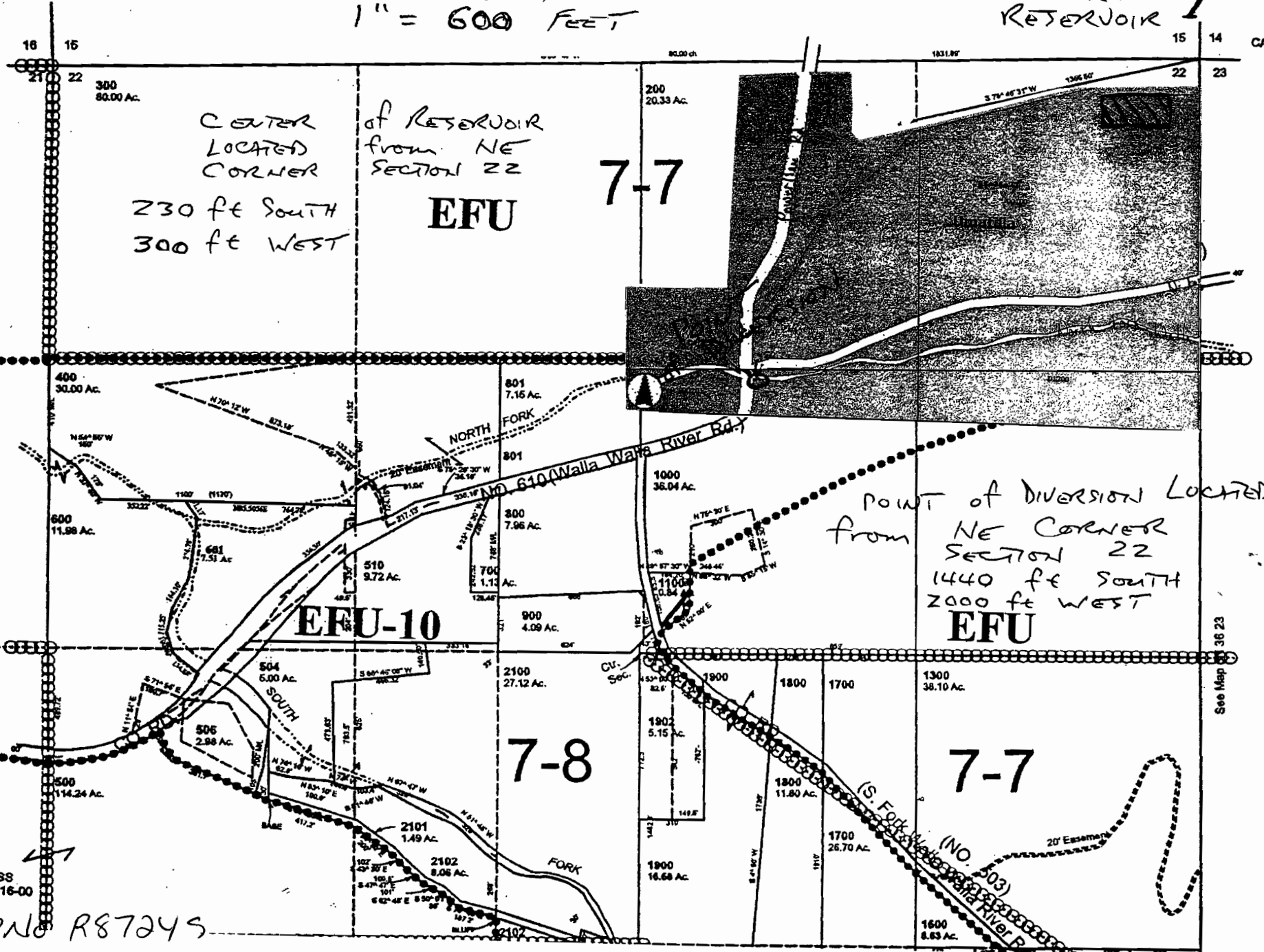
# SEC 22 T 5N R 36 E WM UMATILLA COUNTY, OR

7/23/03

See FIRM for areas

ADJUSTED CORRECTED  
APPROX SCALE  
1" = 600 FEET

POND  
RESERVOIR 1



CENTER of RESERVOIR  
LOCATED from NE  
CORNER SECTION 22  
230 ft SOUTH  
300 ft WEST

7-7

EFU

POINT OF DIVERSION LOCATED  
from NE CORNER  
SECTION 22  
1440 ft SOUTH  
2000 ft WEST  
EFU

EFU-10

7-8

7-7

CNTSS  
LD-5N-616-00  
APPNO R87245