

THIS MAP WAS PREPARED FOR  
ASSESSMENT PURPOSE ONLY

SECTION 6 T6S R3W W.M.  
YAMHILL COUNTY

ADJUSTED AS PER  
S CASE  
1" = 600 FEET

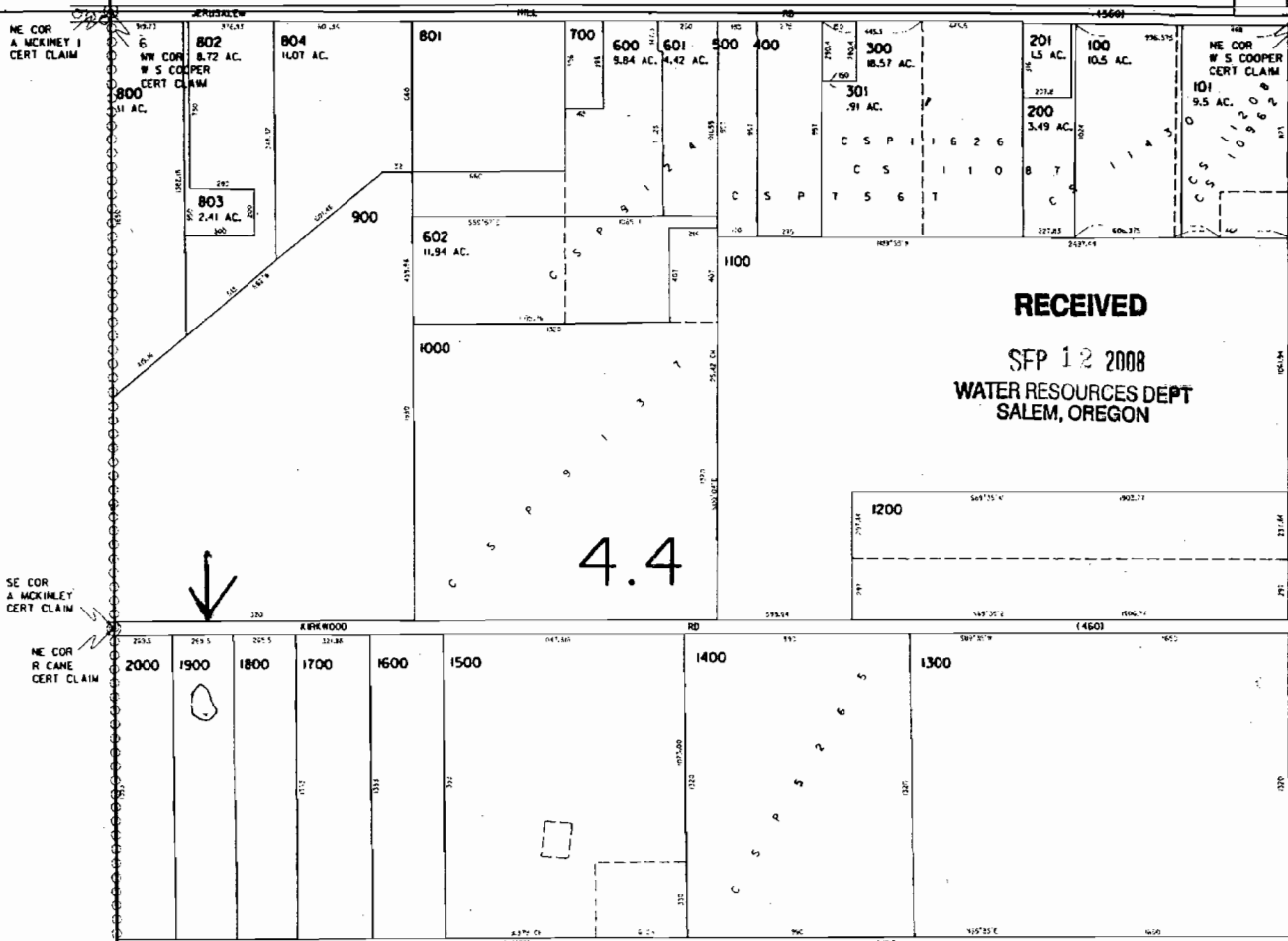
SEE MAP 5 3 31

36

31

31

32



RECEIVED  
SFP 12 2008  
WATER RESOURCES DEPT  
SALEM, OREGON

4.4

RESERVOIR LOCATED  
FROM SW CORNER  
SECTION 6  
2300 ft NORTH  
385 ft EAST

POLK COUNTY

SW COR  
W S COOPER  
CERT CLAIM  
6

SE COR  
W S COOPER  
CERT CLAIM  
6

SEE MAP 6 4 01

SEE MAP 6 3 05

APP NO R87264

OP 11/2/08