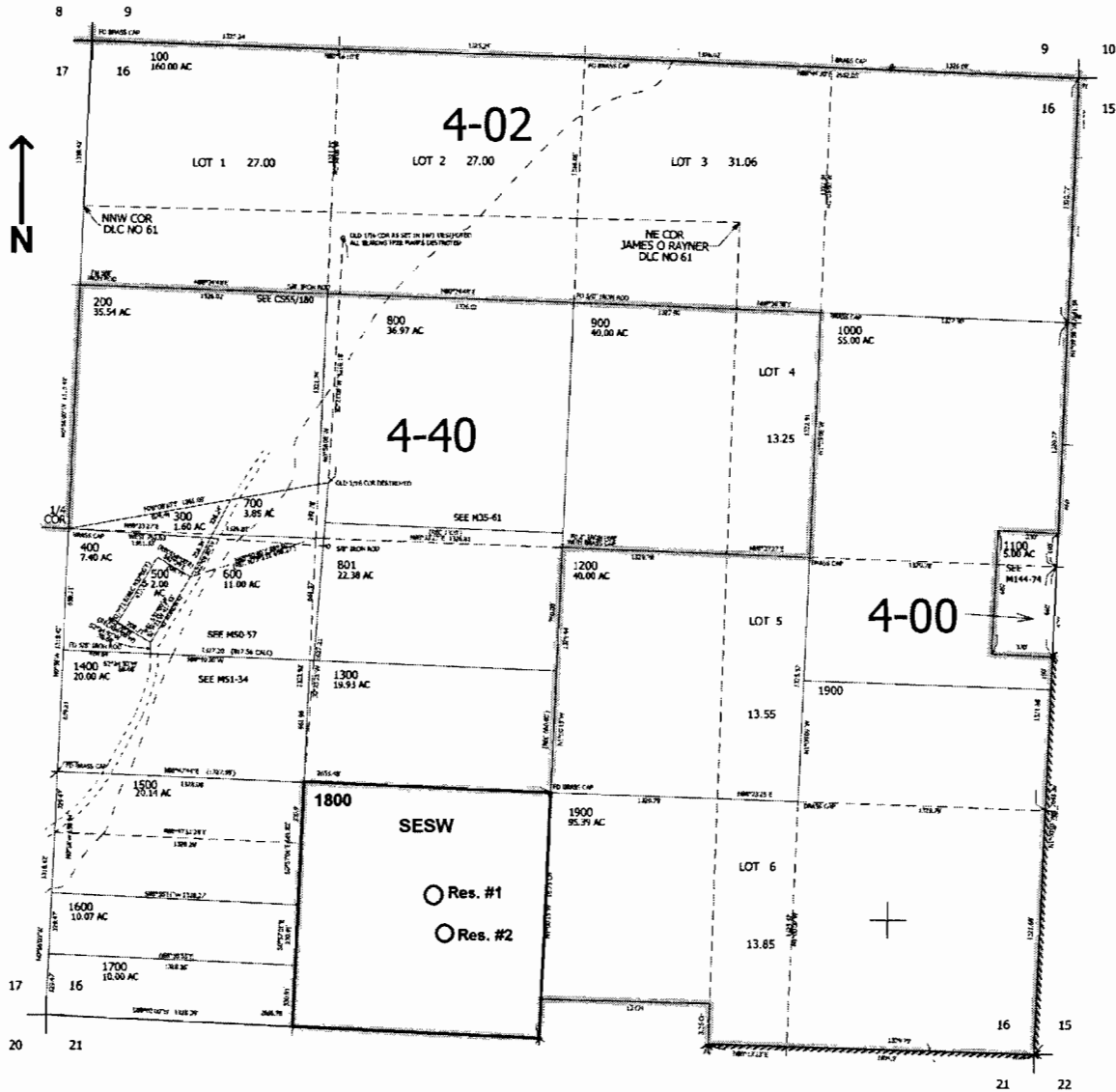


R-87346

SEC.16 T.26S. R.6W. W.M.
DOUGLAS COUNTY
Scale: 1" = 1000'



Res. #1- 750 ft. N. and 600 ft. W. }
 Res. #2- 530 ft. N. and 530 ft. W. }
 from the S1/4 corner of Sec. 16

RECEIVED

NOV 20 2008

WATER RESOURCES DEPT
SALEM, OREGON

App No R87346