

IMPORTANT  
 is Map for Assessment  
 and Taxation Purposes  
 ONLY

RECEIVED

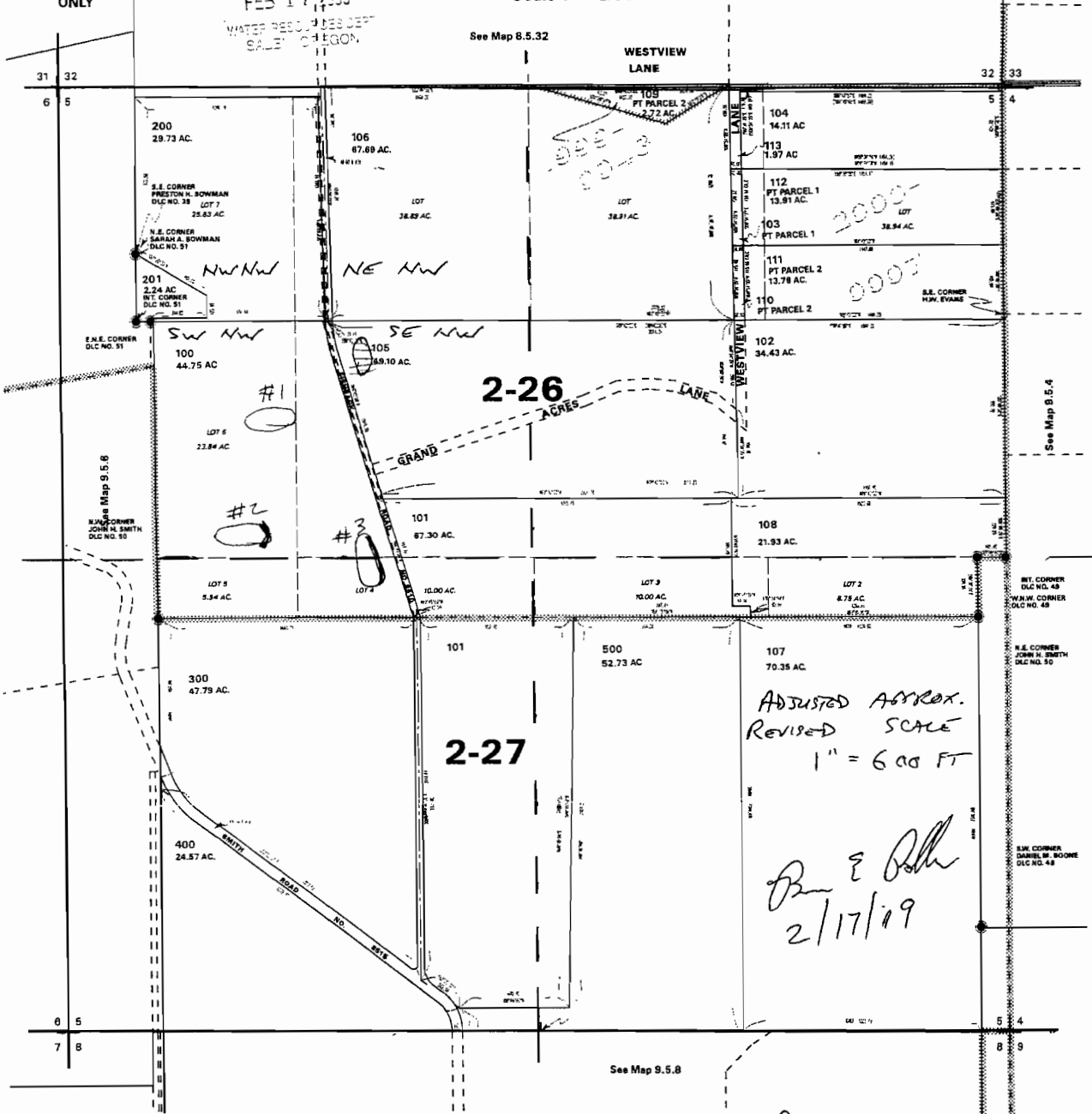
FEB 17 2009

WATER RESOURCES DEPT  
 SALES OREGON

SEC. 5 T9S R5W WM  
 POLK COUNTY

Scale 1" = 600'

R-87391



3 Reservoirs Measured from  
 NW Corner SECTION 5

Reservoir #1	1850	ft	South	&	1150	ft	East
Reservoir #2	2500	ft	South	&	1000	ft	East
Reservoir #3	2650	ft	South	&	1725	ft	East