

IMPORTANT
 is Map for Assessment
 and Taxation Purposes
 ONLY

RECEIVED

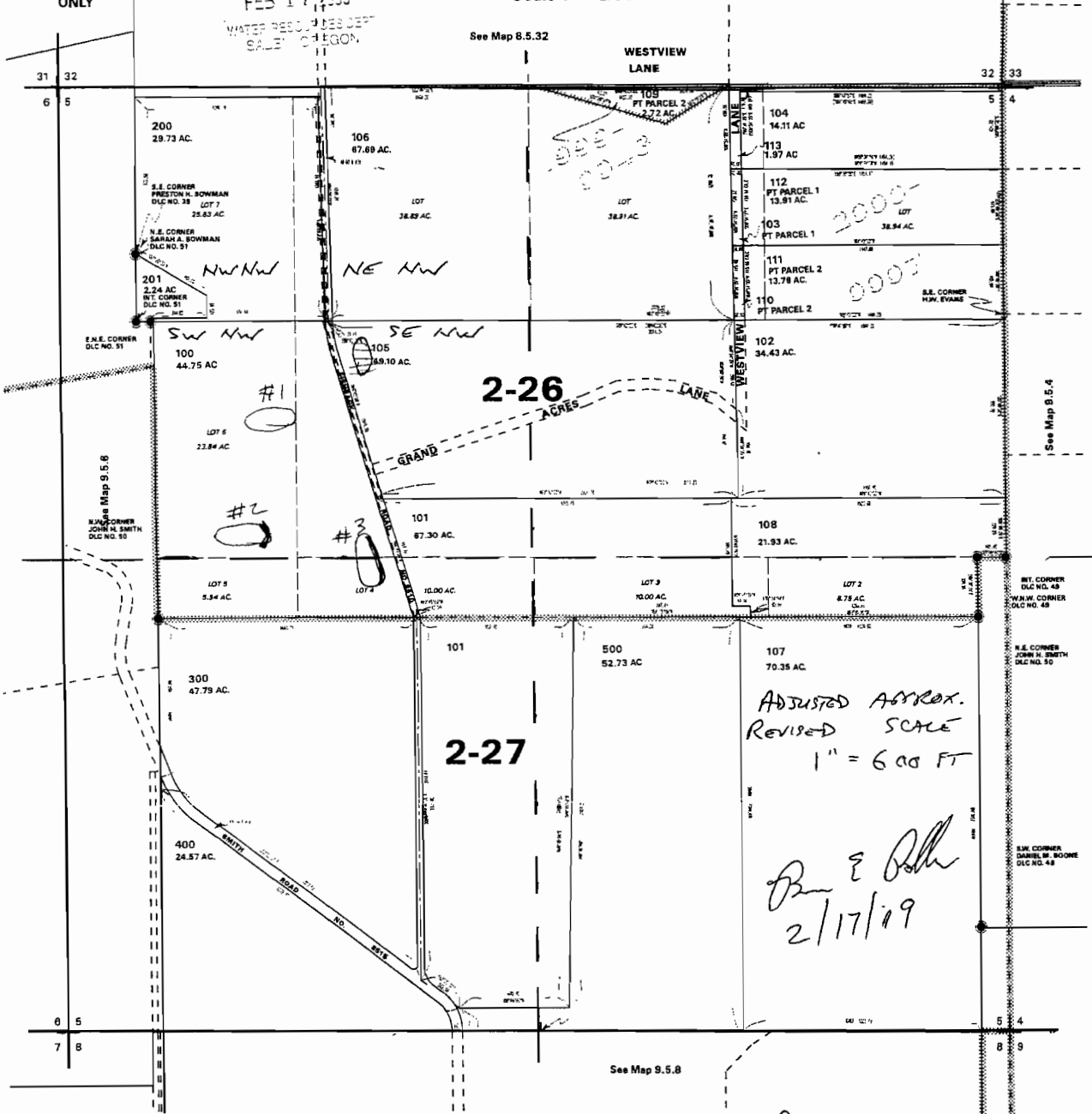
FEB 17 2009

WATER RESOURCES DEPT
 SALES OREGON

SEC. 5 T9S R5W WM
 POLK COUNTY

Scale 1" = 600'

R-87391



3 Reservoirs Measured from
 NW Corner SECTION 5

Reservoir #1	1850	ft	South	&	1150	ft	East
Reservoir #2	2500	ft	South	&	1000	ft	East
Reservoir #3	2650	ft	South	&	1725	ft	East