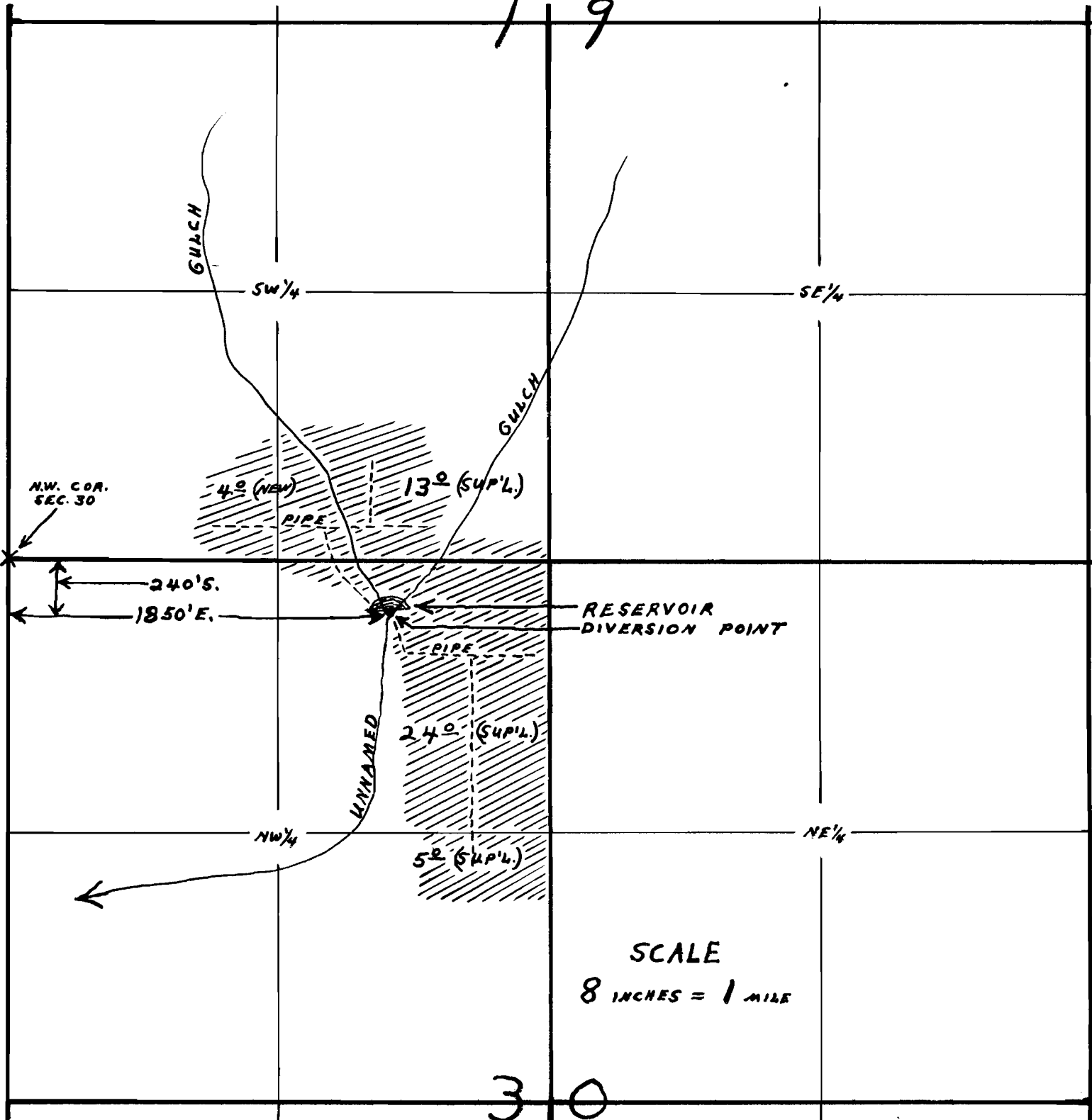


SECTIONS 19 & 30, T. 38 S., R. 1 E., W.M.

19

30



MAP TO ACCOMPANY APPLICATION OF C.C. CORWIN, FOR USE OF WATER FROM TWO UNNAMED GULCHES FOR IRRIGATION, SUPPLEMENTAL IRRIGATION, AND STORAGE PURPOSES.

THIS OFFICE 12-9-52
David L. Hendrix

Application No. R-28042
28043
Permit No. R-1475 & 22061