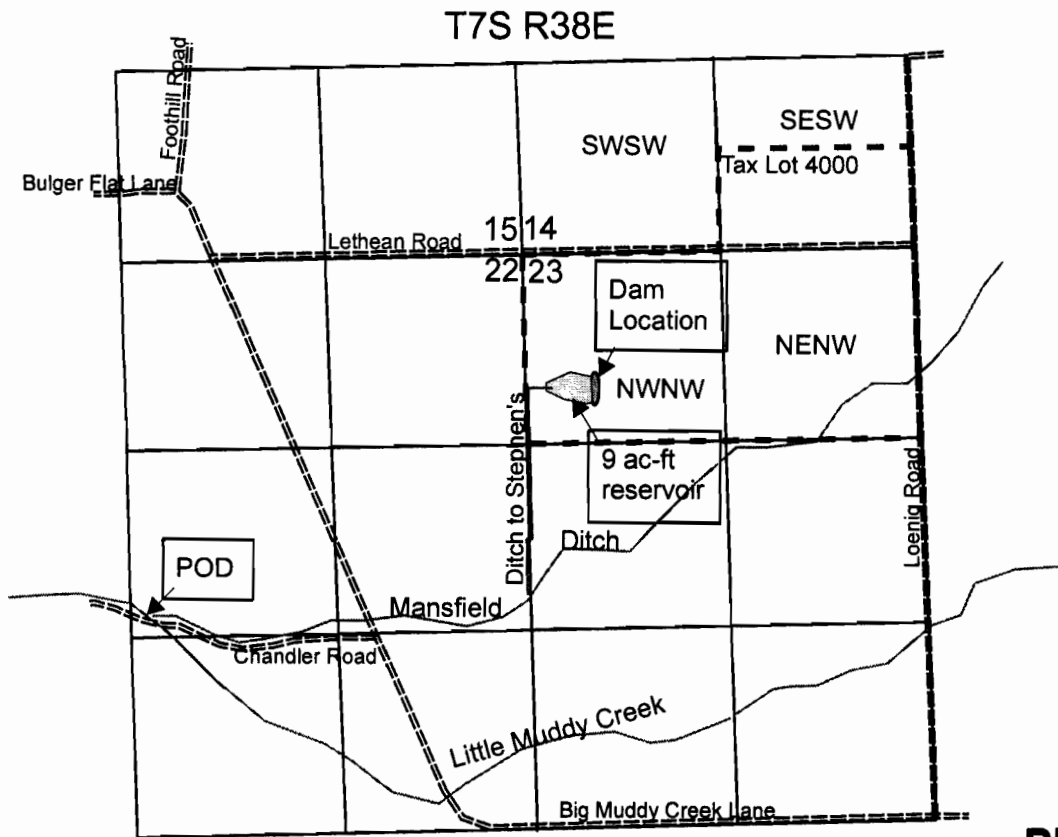


# Application Map for a Permit to Store Water in a Reservoir

## Richard D. Stephens Stephens Upper Pond



POD: Mansfield Ditch POD on Little Muddy Creek is  
2470' South and 2540' West from the NE Corner Section 22

Dam Location: 910' South and 650' East from NW Corner, Section 33

**RECEIVED**

FEB 27 2009

WATER RESOURCES DEPT  
SALEM, OREGON

