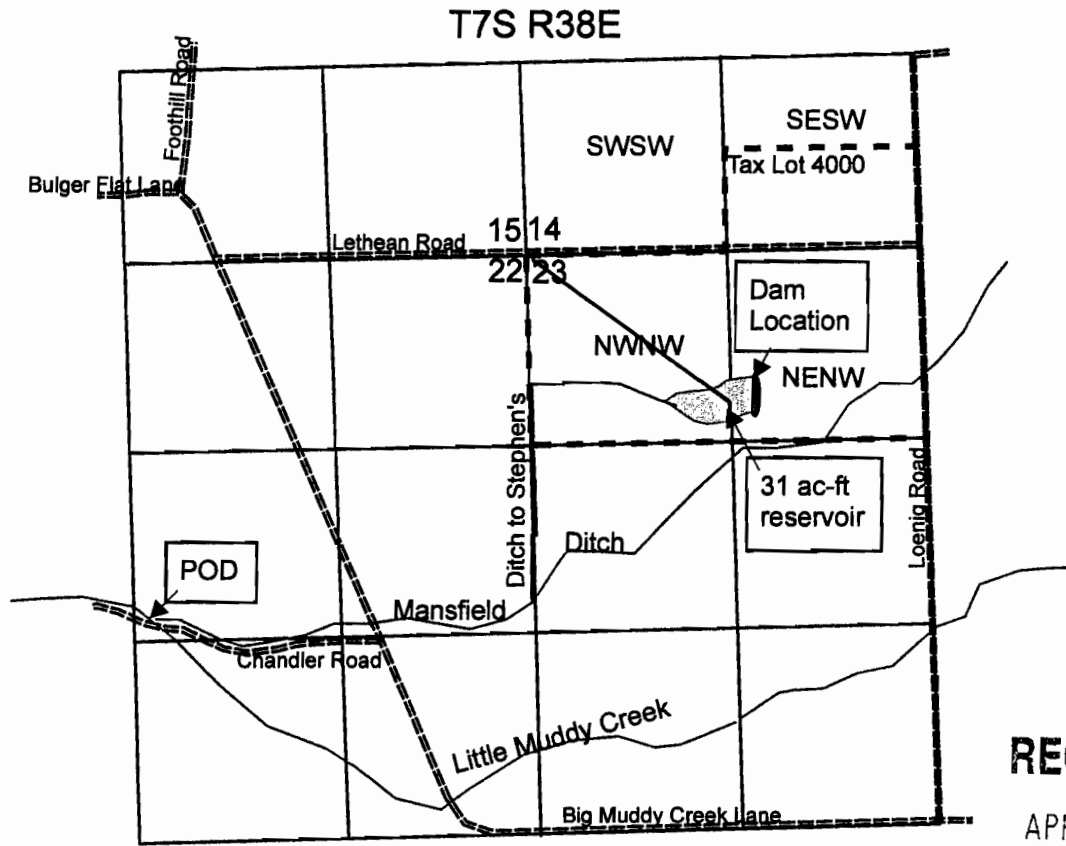


Application Map for a Permit to Store Water in a Reservoir

Richard D. Stephens
Stephens Lower Pond



RECEIVED

APR 23 2009

WATER RESOURCES DEPT
SALEM, OREGON

POD: Mansfield Ditch POD on Little Muddy Creek is
2470' South and 2540' West from the NE Corner Section 22

Dam Location: ~~1600~~¹⁰⁰⁰ South and 1520' East from NW Corner, Section 23

