

WATER RIGHTS APPLICATION MAP PPV COOPER CREEK

T8S, R5W, WM S 33, Taxlot 601
T9S, R5W, WM S 4, Taxlots 100-104
POLK COUNTY, OREGON
WILLAMETTE RIVER BASIN



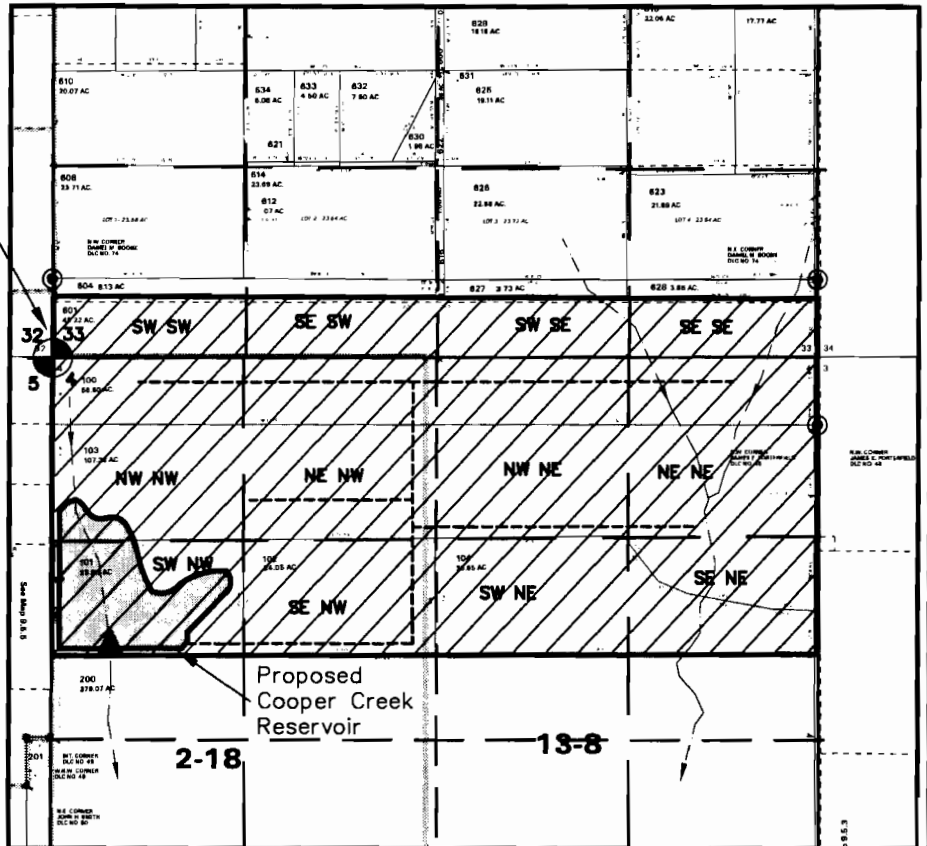
RECEIVED

MAR 24 2008

WATER RESOURCES DEPT
SALEM, OREGON

IRRIGATION ACREAGE		
T8S R5W SEC. 33	SW SW	12.9 AC
	SE SW	12.6 AC
	SW SE	12.4 AC
	SE SE	12.1 AC
	TOTAL - 50.0 AC	
T9S R5W SEC. 4	NW NW	40.0 AC
	NE NW	40.0 AC
	NW NE	40.0 AC
	NE NE	40.0 AC
	SW NW	21.6 AC
	SE NW	21.9 AC
	SW NE	21.8 AC
	SE NE	21.7 AC
	TOTAL - 247.0 AC	
TOTAL IRRIGATED AC 297.0		

NW corner
Sec. 4



▲ Point of Diversion is 1980 ft south and 400 ft east of NW corner Section 4.



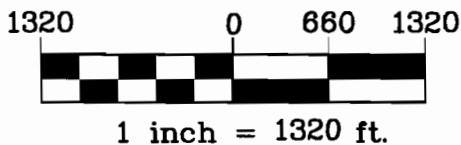
Potential irrigation area: 297 acres

----- Proposed main irrigation pipe
(Approx. location—System not designed yet)

- - - - - Unnamed intermittent stream



Project: 307-2-151
Drawing: 3072151H WR.dwg
By: CVB/WPK
Checked by: EAU
Date: 2-18-08



Base Maps:
Tax Assessor Maps 8S 5 33
and 9S 5 4

App No R 87122