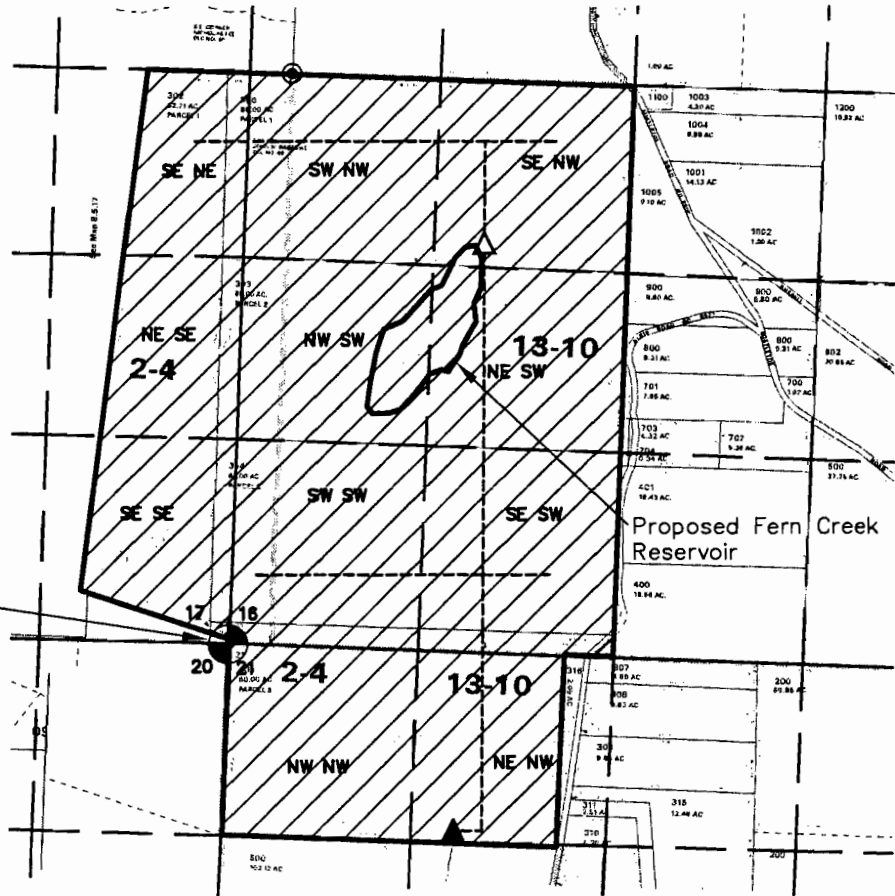


WATER RIGHT APPLICATION MAP PPV FERN CREEK

T8S, R5W, WM S 16, Taxlots 300, 302, 303, & 304
T8S, R5W, WM S 21, Taxlot 400
POLK COUNTY, OREGON
WILLAMETTE RIVER BASIN



IRRIGATION ACREAGE		
SEC. 17	SE NE	23.6 AC
	NE SE	27.5 AC
	SE SE	30.0 AC
	TOTAL -	81.1 AC
SEC. 16	SW NW	38.5 AC
	SE NW	40.0 AC
	NW SW	35.6 AC
	NE SW	40.0 AC
	SW SW	38.0 AC
	SE SW	40.0 AC
	TOTAL -	232.1 AC
SEC. 21	NW NW	40.0 AC
	NE NW	29.8 AC
	TOTAL -	69.8 AC
TOTAL IRRIGATED AC		383.0



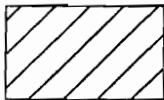
SW Corner
Sec. 16

RECEIVED

JAN 28 2009

WATER RESOURCES DEPT
SALEM, OREGON

- ▲ Point of Diversion #1 is 1250 feet south and 1650 feet east of SW corner Section 16.
- △ Point of Diversion #2 is 2750 feet north and 1760 feet east of SW corner Section 16.



Potential irrigation area: 383 acres

----- Proposed main irrigation pipe
(approx. location—system not designed)

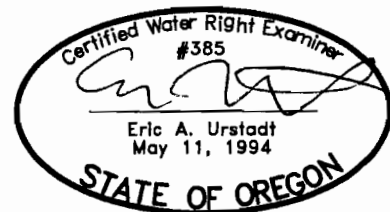
THIS MAP WAS PREPARED FOR THE PURPOSE OF IDENTIFYING THE LOCATION OF WATER RIGHTS ONLY AND IS NOT INTENDED TO PROVIDE LEGAL DIMENSIONS OR LOCATION OF PROPERTY OWNERSHIP LINES.

1320 0 660 1320



1 inch = 1320 ft.

MAP BASE:
ASSESSOR MAPS 8S 5 16,



EXPIRES 06/30/2010



Project: 307-2-152
Drawing: 3072152F-WR.dwg
By: CVB/WPK
Checked by: EAU
Date: 07-21-08
Rev.: 01-15-09