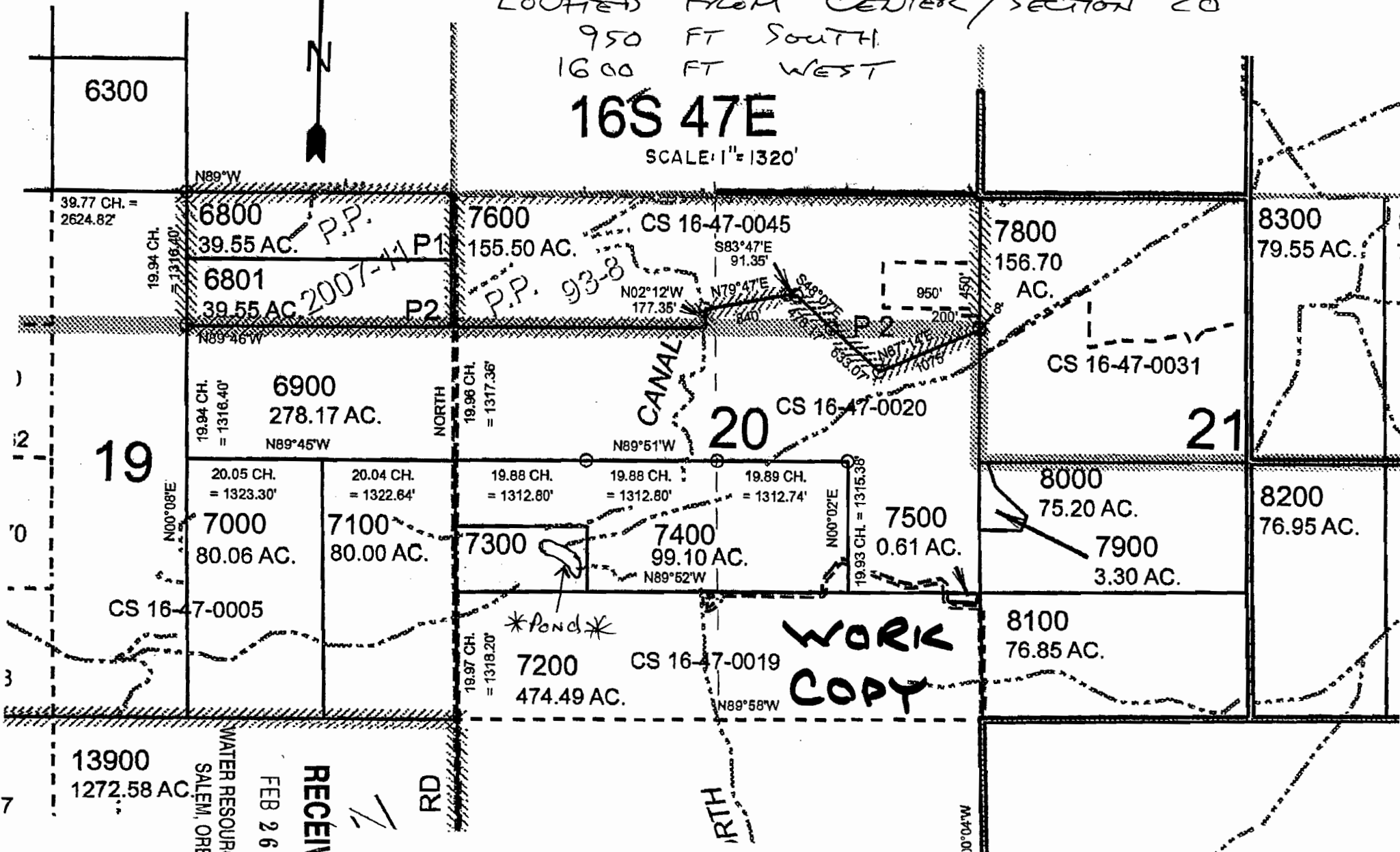


CENTER of RESERVOIR
LOCATED FROM CENTER / SECTION 20
950 FT SOUTH
1600 FT WEST

16S 47E

SCALE: 1" = 1320'



6300

39.77 CH. = 2624.82'

N89°W

6800

39.55 AC.

6801

39.55 AC.

19.94 CH. = 1316.40'

N89°46'W

6900

278.17 AC.

19.94 CH. = 1316.40'

N89°45'W

19

20.05 CH. = 1323.30'

7000

80.06 AC.

N00°08'E

20.04 CH. = 1322.84'

7100

80.00 AC.

NORTH RD

19.96 CH. = 1317.36'

19.88 CH. = 1312.80'

7300

474.49 AC.

19.97 CH. = 1318.20'

Pond

7200

474.49 AC.

P.P. 93-8

N02°12'W 177.35'

CANAL

N89°51'W

19.88 CH. = 1312.80'

7400

99.10 AC.

N89°52'W

CS 16-47-0019

NORTH RD

20

19.89 CH. = 1312.74'

7500

0.61 AC.

N00°02'E 19.93 CH. = 1315.38'

WORK COPY

CS 16-47-0045

S83°47'E 91.35'

N79°47'E

CS 16-47-0020

7800

156.70 AC.

CS 16-47-0031

8000

75.20 AC.

7900

3.30 AC.

8100

76.85 AC.

8300

79.55 AC.

8200

76.95 AC.

13900

1272.58 AC.

WATER RESOURCES DEPT
SALEM, OREGON

FEB 26 2009

RECEIVED

1/1

RD

MAD:JC