

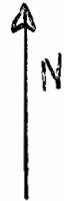
R-8746

THIS MAP WAS PREPARED FOR ASSESSMENT PURPOSE ONLY

SECTION 13 T5S R4W W.M. YAMHILL COUNTY

5 4 13

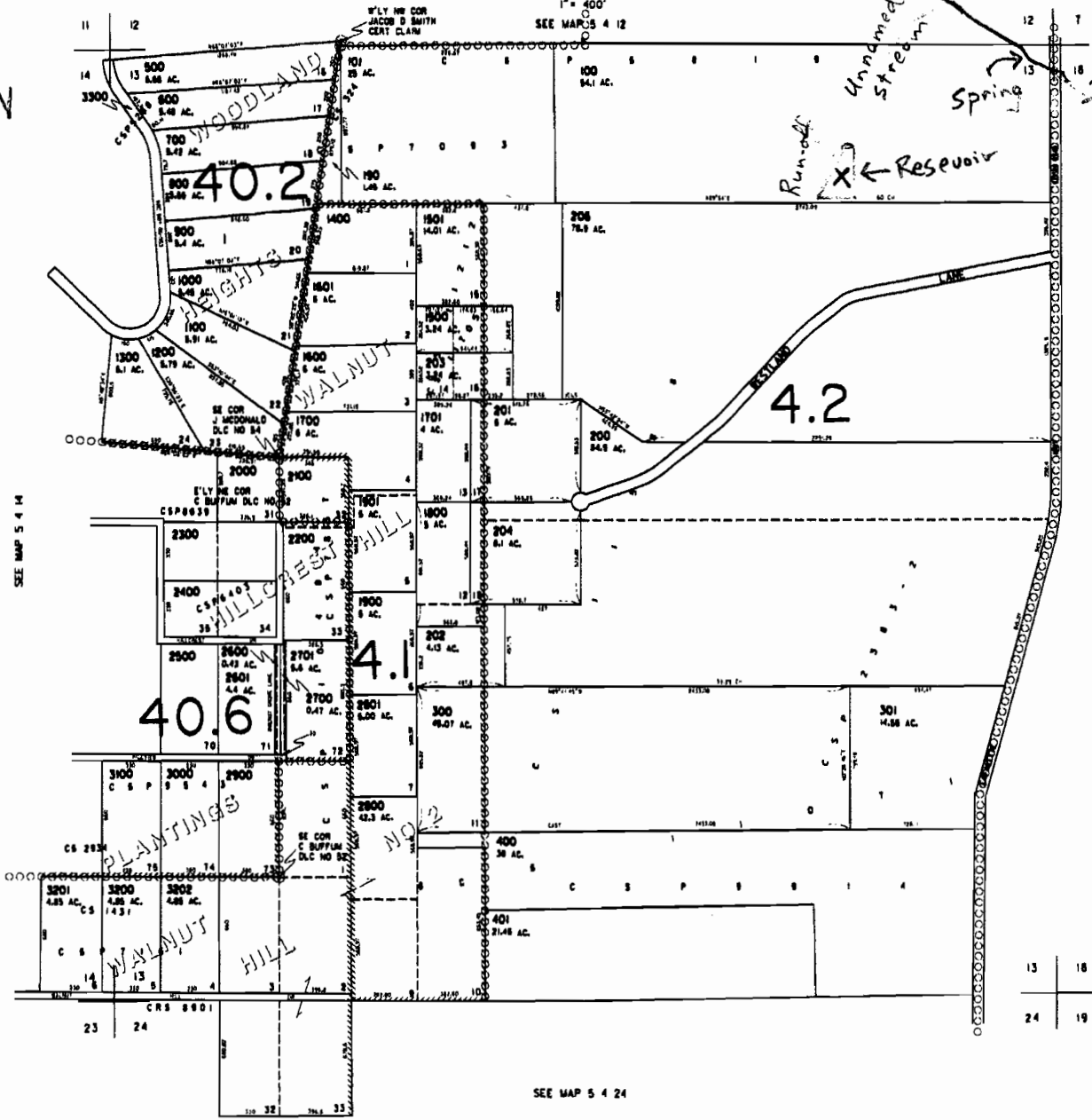
Scale 1" = 1000'



Reservoir Location:  
650 ft S  
1300 ft E  
NE corner of Sec 13

7.5 Lot  
RS413-00100

Source is Run-off  
Source is Cert # 15760



CANCELLED 205  
Hold rider  
Creeks

SEE MAP 5 3 18

SEE MAP 5 4 24

13	18
24	19

REVISED --7-08 50

5 4 13