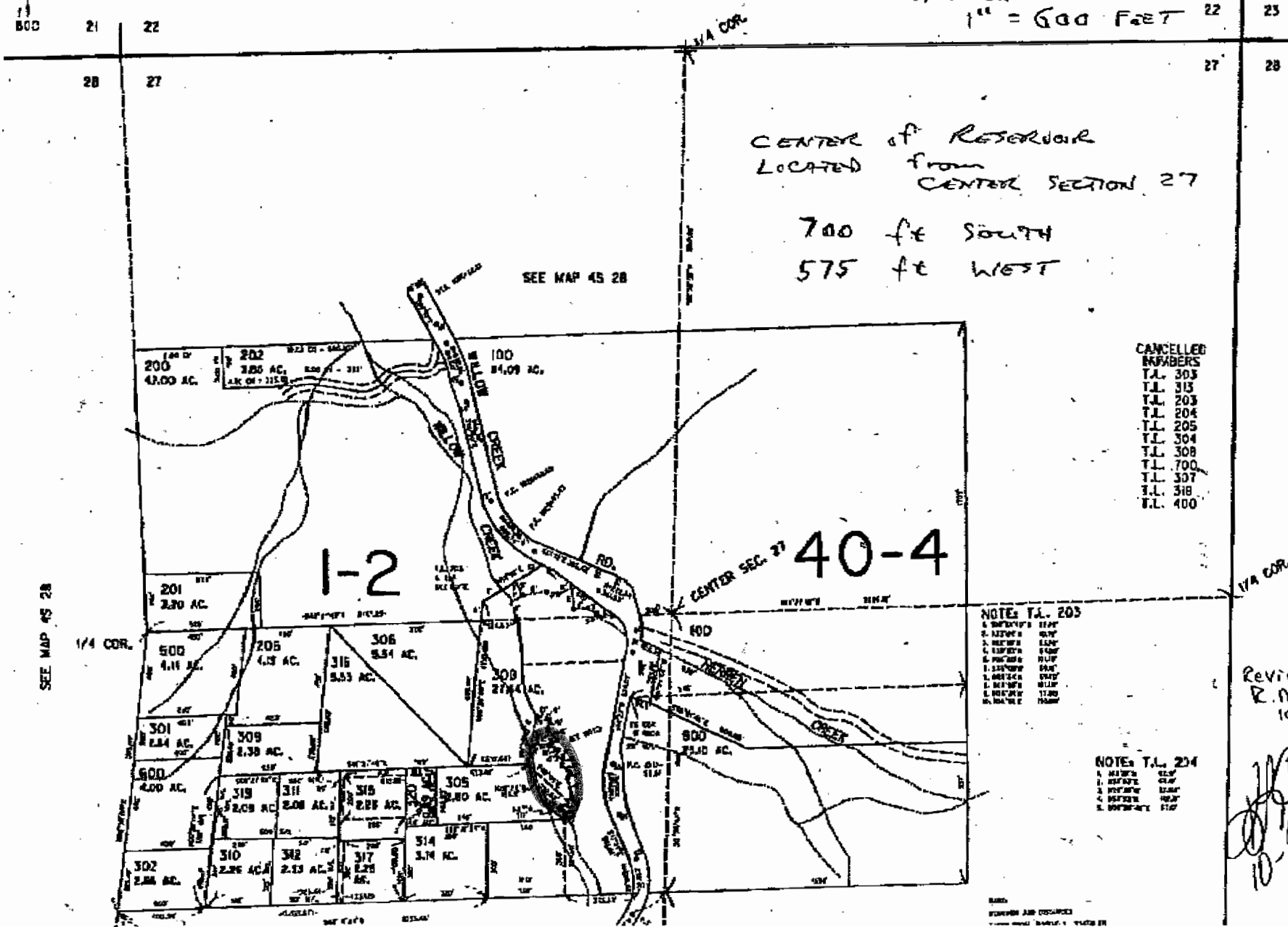


THIS MAP WAS PREPARED FOR
ASSESSMENT PURPOSE ONLY

SECTION 27 T.4S. R.28E. W.M. MORROW COUNTY

1" = 400'

ADJUSTED CORRECTED
APPROX SCALE
1" = 600 FEET



CENTER of Reservoir
LOCATED from
CENTER SECTION 27

700 ft SOUTH
575 ft WEST

- CANCELLED
NUMBERS
- T.L. 303
 - T.L. 313
 - T.L. 203
 - T.L. 204
 - T.L. 205
 - T.L. 304
 - T.L. 308
 - T.L. 700
 - T.L. 307
 - T.L. 318
 - T.L. 400

- NOTE: T.L. 203
- 1. MARY'S EDP
 - 2. MARY'S EDP
 - 3. MARY'S EDP
 - 4. MARY'S EDP
 - 5. MARY'S EDP
 - 6. MARY'S EDP
 - 7. MARY'S EDP
 - 8. MARY'S EDP
 - 9. MARY'S EDP
 - 10. MARY'S EDP

- NOTE: T.L. 204
- 1. MARY'S EDP
 - 2. MARY'S EDP
 - 3. MARY'S EDP
 - 4. MARY'S EDP
 - 5. MARY'S EDP

Reviewed by
R. Montimore
10-9-09

[Handwritten signature]
10-9-09