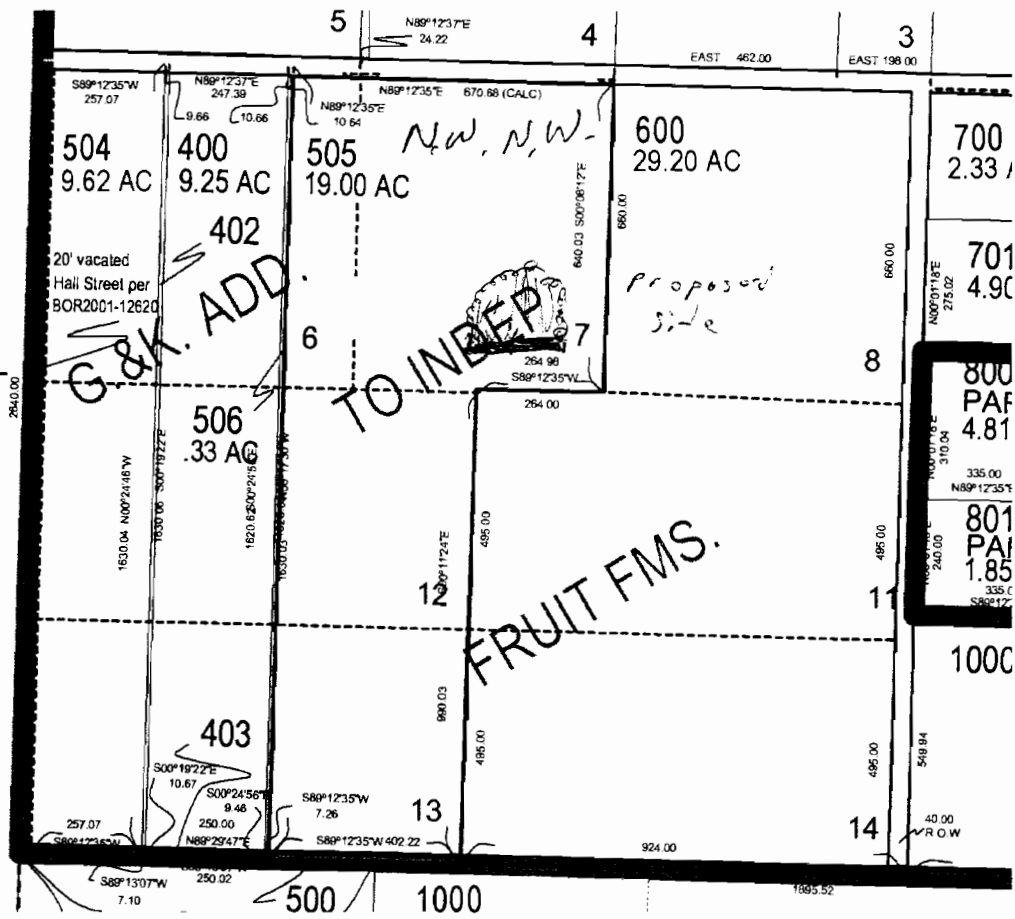


\* ← NW corner section 8

R-87537

1200 ft South  
1000 ft East  
NW corner  
Section 8

↑ North



Polk County Map

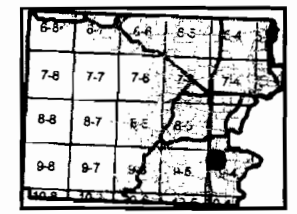
9.4.8

- Railroad
- Roads
- Section
- Subdivision
- Taxlot09
- Taxlot Arrows09
- Taxlot Boundary5
- taxlot09
- TaxMap
- Updates

RECEIVED

OCT 13 2009

WATER RESOURCES DEPT  
SALEM, OREGON



*alpha to beta J*  
10/13/09

This map was produced using the Polk County GIS data. The GIS data is maintained by the county to support its governmental activities. The county is not responsible for map errors, omissions, misuse or misinterpretation.

1 in. = 400 ft.



9/29/2009

