

App R-87496

R-87496

SECTION 28 T5S R4W W.M.
YAMHILL COUNTY
1" = 400'

5 4 28

Map:

Goffena Reservoir #1

Goffena Reservoir #2

THIS MAP WAS PREPARED FOR
ASSESSMENT PURPOSE ONLY

CORRECTED MAP SCALE
APPROX 1" = 600'

SEE MAP 5 4 21

21 22
28 27

CANCELLED
401
402

Applicant:

Steve & Rosalba Goffena

Reservoir Location:

2850' S, and 750' W.

From the NE Corner
Section 28

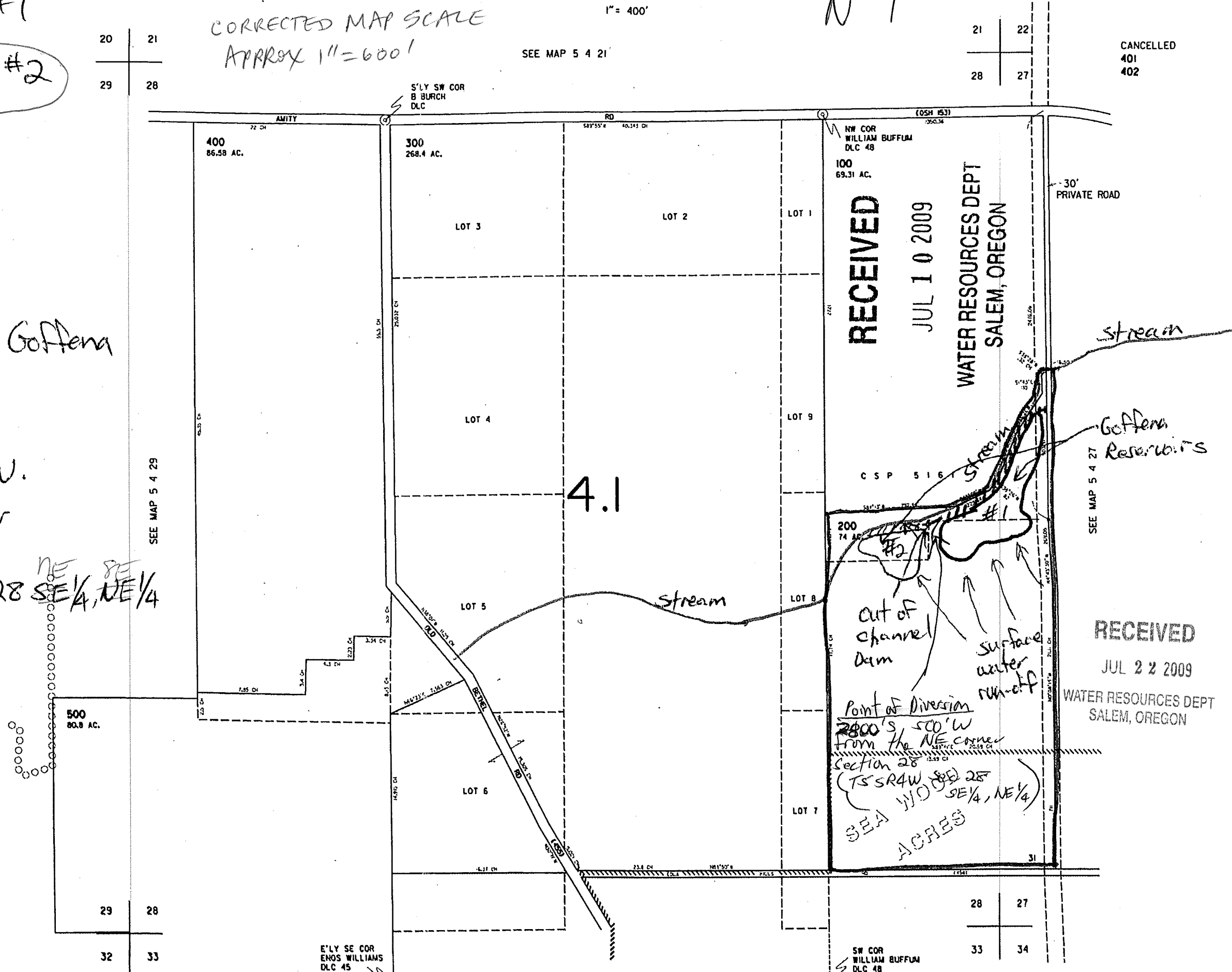
T 5 S. R. 4 W. Sec 28 SE 1/4, NE 1/4

Tax Lot:

00200

Scale:

1" = 400' 600'



RECEIVED

JUL 10 2009

WATER RESOURCES DEPT
SALEM, OREGON

RECEIVED

JUL 22 2009

WATER RESOURCES DEPT
SALEM, OREGON

Point of Diversion
2800' S, 500' W
from the NE corner
Section 28
(T5S R4W W.M. Sec 28
SE 1/4, NE 1/4)
SEA 110 ACRES

cut of channel
dam

Surface
water
run-off

Goffena
Reservoirs

SEE MAP 5 4 27

SEE MAP 5 4 29

E'LY SE COR
ENOS WILLIAMS
DLC 45

SW COR
WILLIAM BUFFUM
DLC 48