

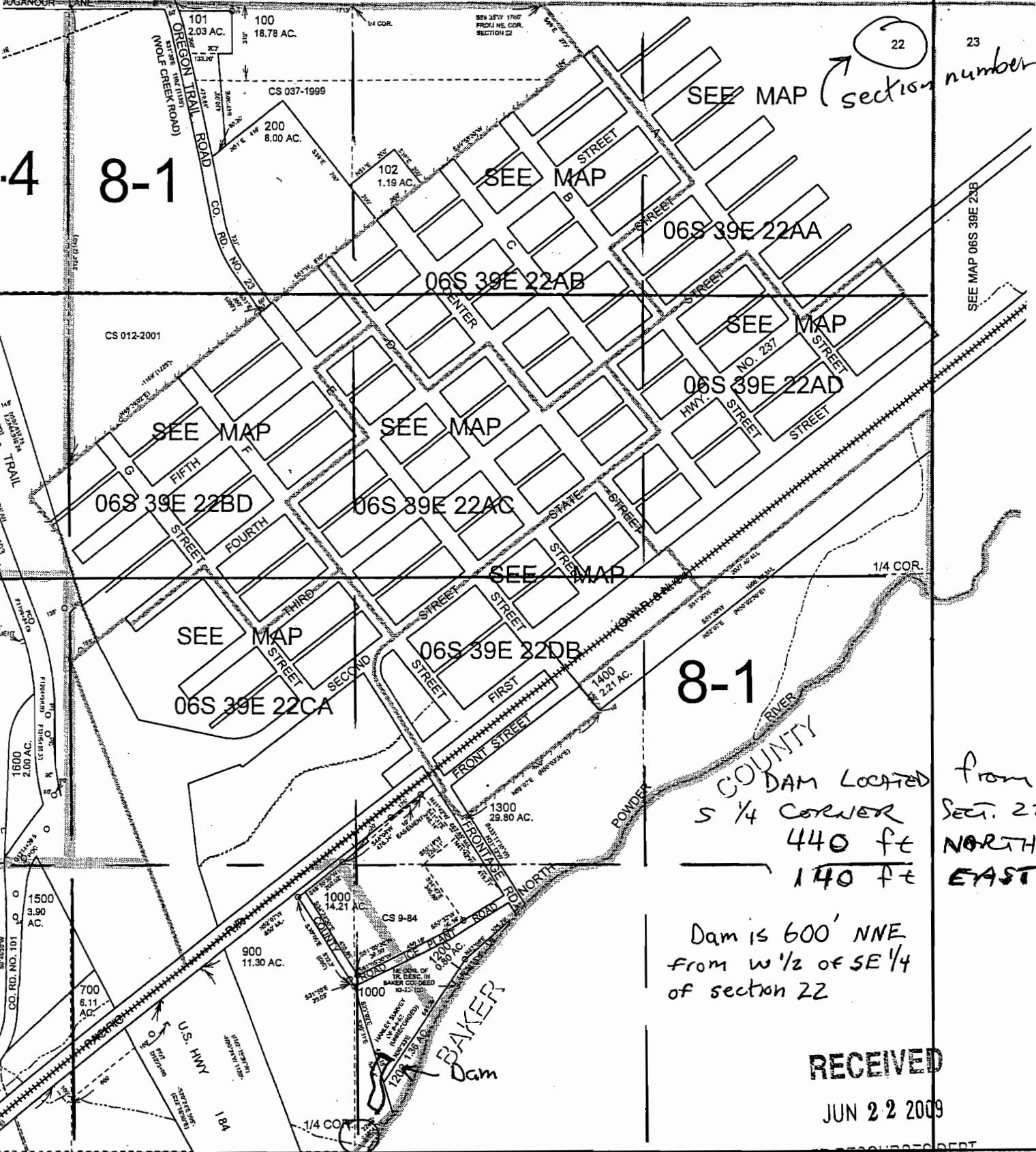
SECTION 22 T.06S. R.39E. W.M.
UNION COUNTY

CORRECTED APPROX.
REVISED SCALE
1" = 600 FEET.

NORT

1" = 600'
SEE MAP 06S 39E

800 Feet



22
23
SEE MAP (section number)

4 8-1

8-1

COUNTY

DAM LOCATED FROM
S 1/4 CORNER Sect. 22
440 ft NORTH
140 ft EAST

Dam is 600' NNE
from W 1/2 of SE 1/4
of section 22

RECEIVED

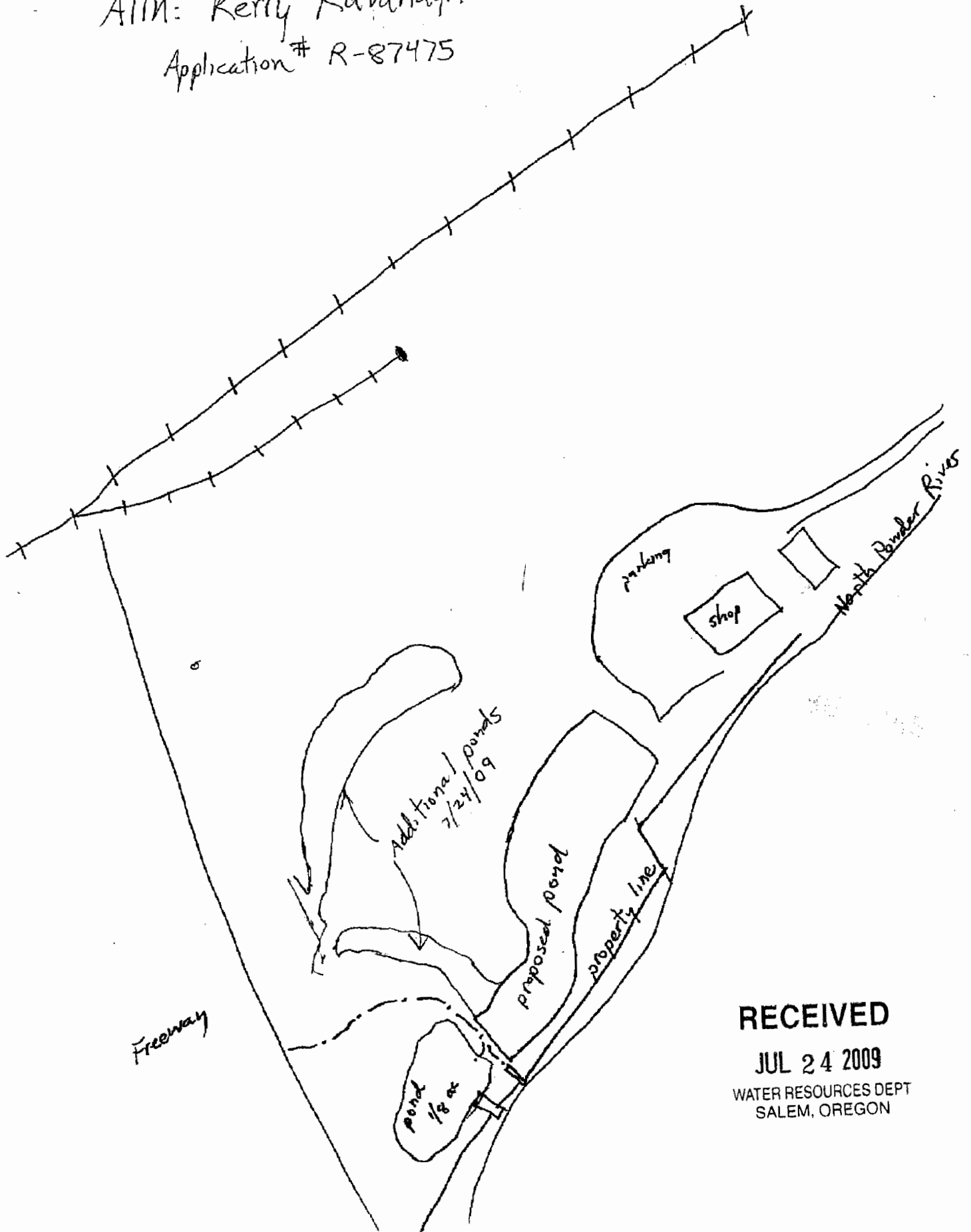
JUN 22 2009

WATER RESOURCES DEPT
SALEM, OREGON

8-4

1/4 section corner

ATTN: Kerry Kavanagh
Application # R-87475



RECEIVED
JUL 24 2009
WATER RESOURCES DEPT
SALEM, OREGON