

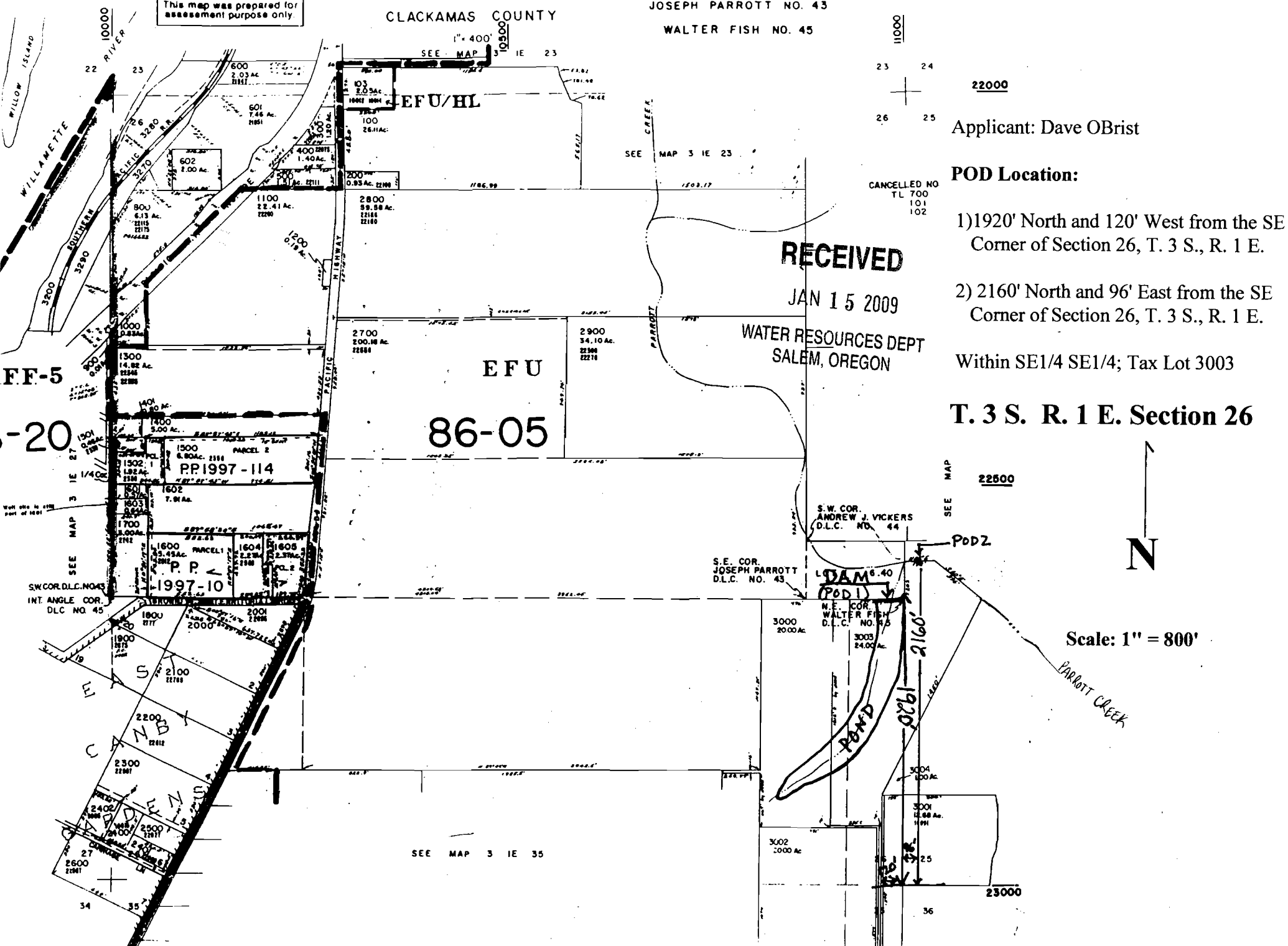
R-87376

SECTION 26 T.3S. R.1E. WM
CLACKAMAS COUNTY

D.L.C.'S
JOSEPH PARROTT NO. 43
WALTER FISH NO. 45

3 IE 26

This map was prepared for
assessment purpose only.



Applicant: Dave OBrish

POD Location:

- 1) 1920' North and 120' West from the SE Corner of Section 26, T. 3 S., R. 1 E.
- 2) 2160' North and 96' East from the SE Corner of Section 26, T. 3 S., R. 1 E.

Within SE1/4 SE1/4; Tax Lot 3003

T. 3 S. R. 1 E. Section 26

Scale: 1" = 800'