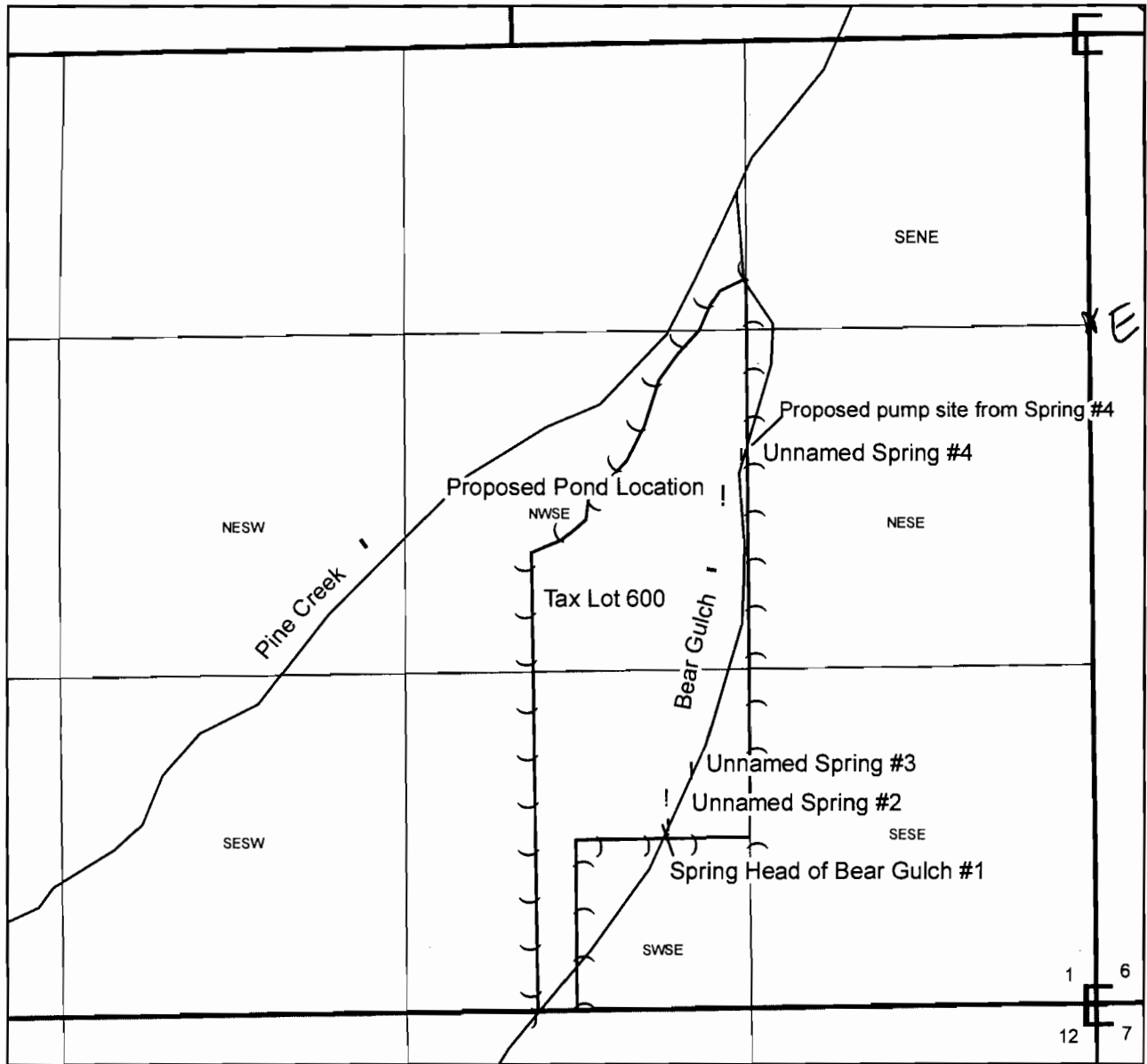


# Robin Olterman Alternate Reservoir Application Map T.14S.R.32E. Sec 01



Pond is located approximately 1905' N and 1400' W of the SE section corner of section 1, T.14S.R.32E W.M. Being within the NWSE of section 1, T14S.R.32E. W.M.



1 inch = 660 feet

Proposed Pump Location from Spring #4  
Spring #4 location is approximately 300 ft South and 1350 ft West of the NE corner of Section 1 being within the NW1/4 SE1/4 Section 1, T. 14S R. 32E W.M.

**RECEIVED**

DEC 02 2009

SALEM, OREGON

R-87459