

Pond loc

70 feet North, 800' East from Center section CU

9 2W 20

SEC.20 T9S R2W WM, MARION COUNTY

**LEGEND**

**LINE TYPES**

TAX LOT BOUNDARY	OLD PROPERTY LINE
ROAD RIGHT-OF-WAY	VACATED RIGHT-OF-WAY
RAILROAD	RAILROAD RIGHT-OF-WAY
STREAM, LAKE, ETC.	STREAM, LAKE, ETC.
TAX LOT BOUNDARY	NON-BOUNDARY
SUBDIVISION BOUNDARY	PARTITION PLAT REV.
TAX CODE BOUNDARY	EASEMENT

**SYMBOL TYPES**

D.L.C.	⊙	
CONTROL POINTS	▲	
SURVEY MONUMENTS	•	
C.L.O. CORNERS	+	
SECTION	1/4 SEC.	1/16 SEC.
⊕	⊕	⊕
	1/4 COR.	1/16 COR.
	⊕	⊕

**NUMBERS**

TAX CODE NO.  
000 00 00 0

ACREAGE - ALL ACREAGES EXCLUDE ANY PORTION THAT MAY LIE WITHIN THE INDICATED PUBLIC RIGHT OF WAYS.

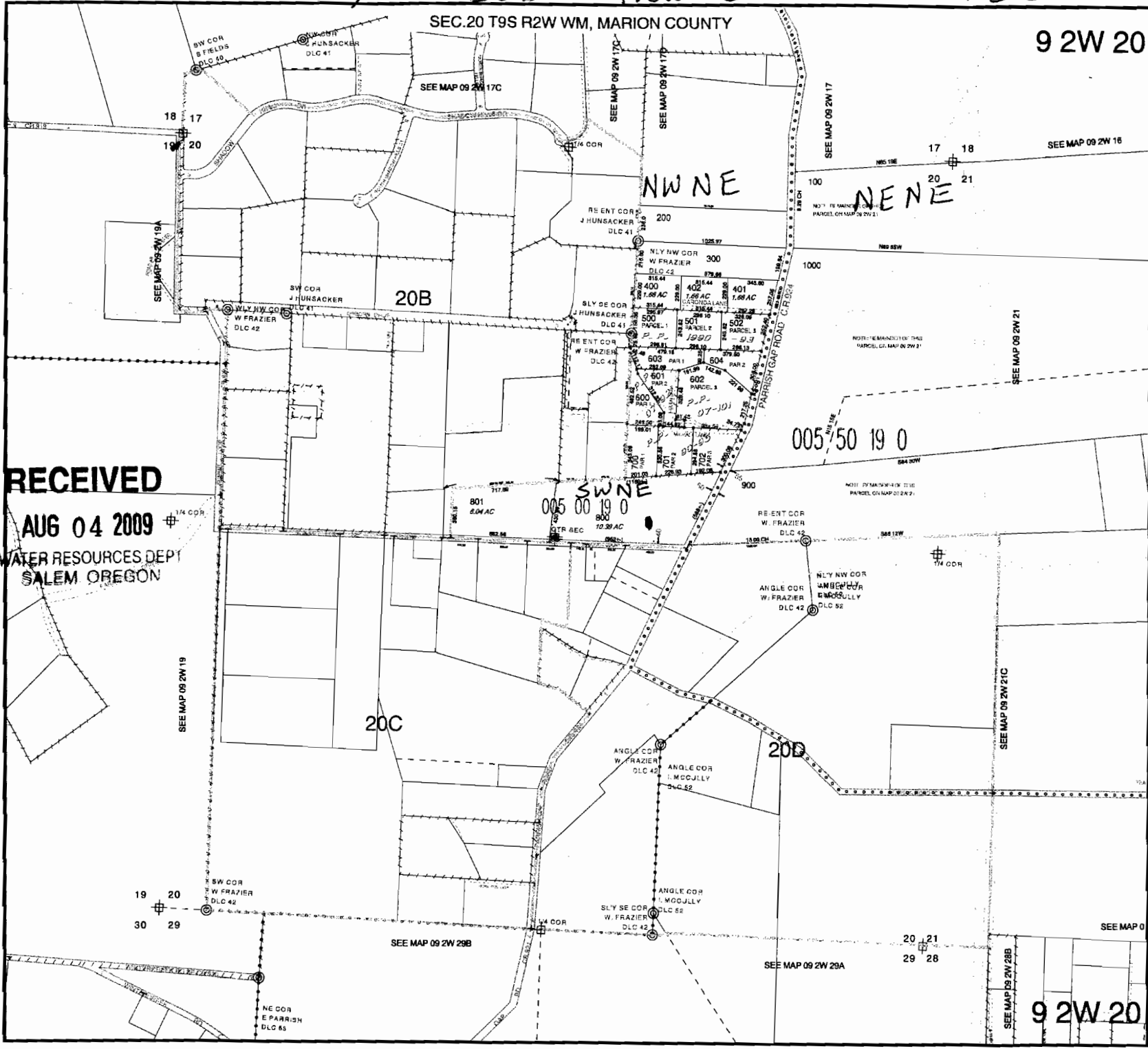
TICK MARKS - WHEN A TICK MARK IS INDICATED ON THE EXTENSION OF A LINE, THEN THE DIMENSION GOES TO THE TICK MARK. GENERALLY THIS IS USED WHEN DIMENSIONS GO INTO PUBLIC RIGHT OF WAYS.

ARROWS ARE USED WITH DIMENSIONS IN AREAS OF GREATER COMPLEXITY.

**NOTICE:** This map was created for Assessor's Office use ONLY.



SCALE 1" = 400'  
or 1:4800  
Plot file created: November 29, 2007  
As image 092W20 of wholter



9 2W 20