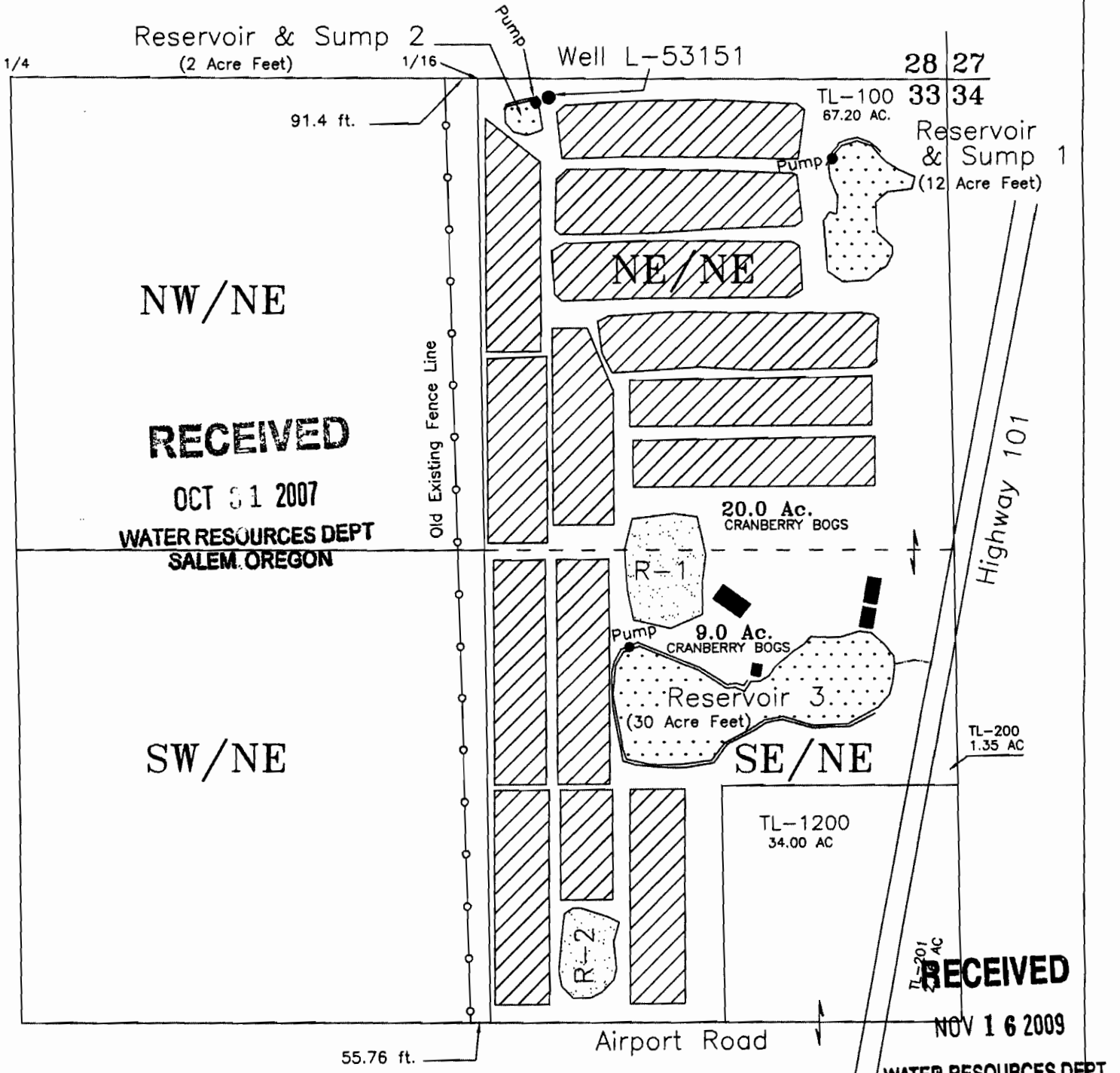


Alternate Review Storage Application Coventry Farms, LLC (Adrienne Good)

NE 1/4 SECTION 33, T 31S, R 15W, WM
CURRY COUNTY



- Cranberry Bogs - 29.0 Acres, Supplemental Cranberry Operations
 - { Reservoir / Sump 1 Center - NE/NE, 450 feet South & 260 feet West*
Pump - NE/NE, 220 feet South & 320 feet West*
Reservoir / Sump 2 Center - NE/NE, 110 feet South & 1170 feet West*
Pump - NE/NE, 70 feet South & 1140 feet West*
Reservoir 3 Center - SW/NE, 1745 feet South & 925 feet West*
 - { Recovery Pond, R-1 Center - SE/NE, 1370 feet South & 795 feet West*
Recovery Pond, R-2 Center - SE/NE, 2440 feet South & 1030 feet West*
 - Well (L-53151) - 50 feet South & 1100 feet West*
 - Buildings
 - Pumps
- *All measurements from the NE Corner of Section 33
(Distances are approximate)

RECEIVED
NOV 16 2009
WATER RESOURCES DEPT
SALEM, OREGON

NORTH

Scale
1 inch = 400 feet

LOCATIONS PER 1/4 1/4 ARE DERIVED BY ASSUMED FIT OF AERIAL PHOTO ORIENTATION TO GROUND SURVEYS AND/OR TAX ASSESSOR MAPS.

Base map CS 31-187 overlaid on aerial photo from Curry County Web site 1/31/2007

The purpose of this map is to identify the location of the water right. It is not intended to provide information relative to the location of property ownership lines.

JORDAN ENGINEERING
460 JORDAN LANE
ROSEBURG, OR 97470
(541) 673-1931

8/23/2007 n.e.d.

map 87022