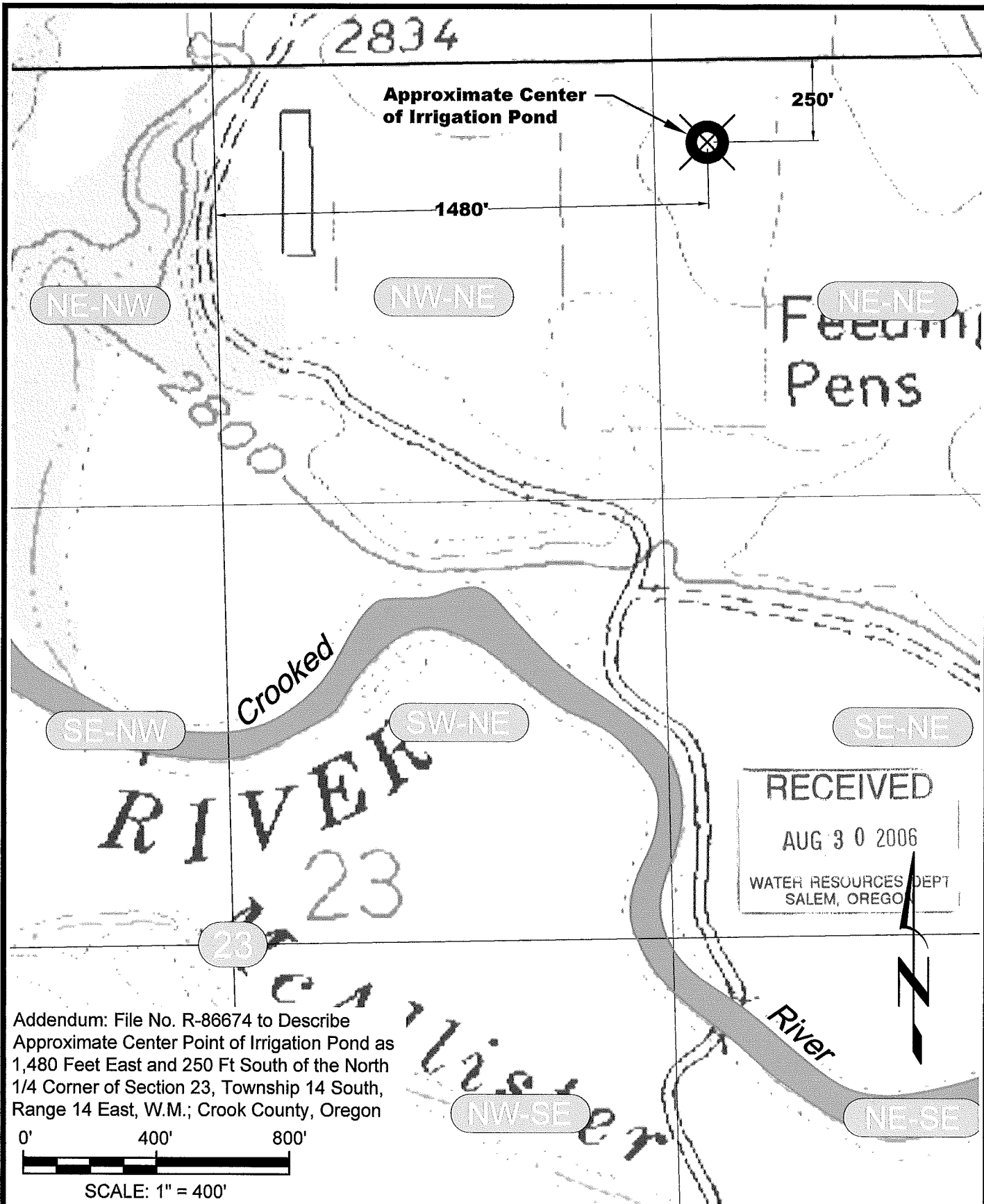
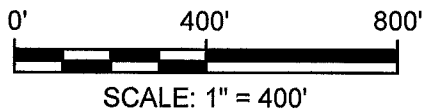


c:\1000\1018\101\Cad\Water\W1018101_F1_PndCntr 09:34 08/28/2006 SS



Addendum: File No. R-86674 to Describe
 Approximate Center Point of Irrigation Pond as
 1,480 Feet East and 250 Ft South of the North
 1/4 Corner of Section 23, Township 14 South,
 Range 14 East, W.M.; Crook County, Oregon



NEWTON
 CONSULTANTS INC.
 Earth, Water and Rock Specialists
 Ph: 541 504-9960 Fax: 541 504-9961



Irrigation Pond Location
 River Run Ranch
 Crook County, Oregon

DESIGNED BY:
D. Newton

DRAWN BY:
S. Schenck

DATE:
August 2006




PROJECT NO.
1018-101

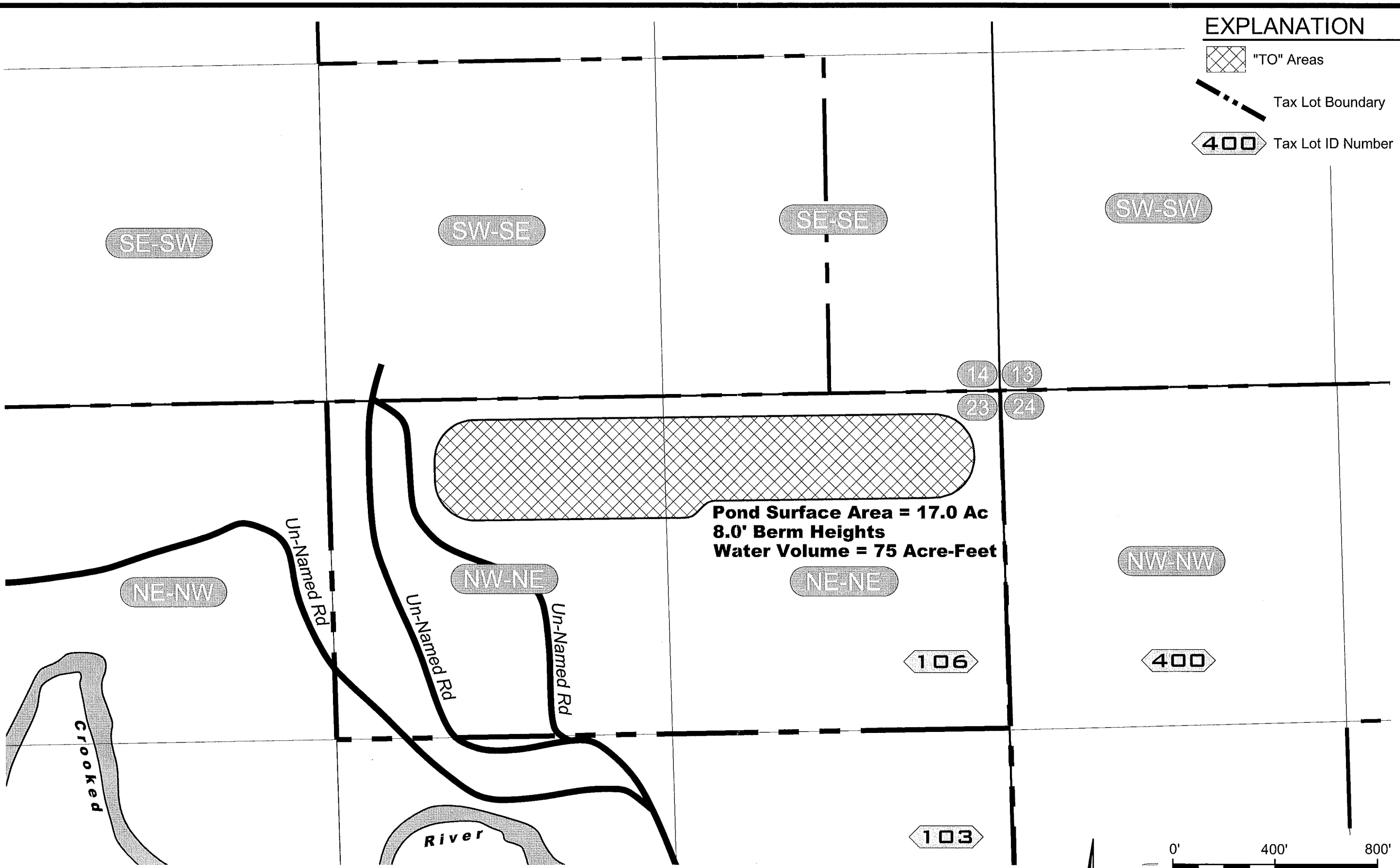
FIGURE **1**

RECEIVED

AUG 24 2006
WATER RESOURCES DEPT
SALEM, OREGON

EXPLANATION

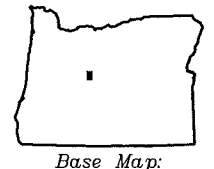
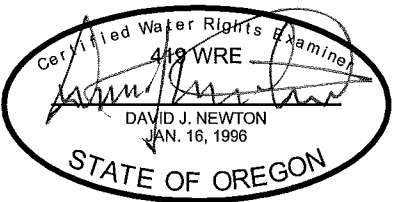
-  "TO" Areas
-  Tax Lot Boundary
-  Tax Lot ID Number



T14S, R14E, Sections 23

NOTES

THIS MAP WAS PREPARED FOR THE PURPOSE OF IDENTIFYING THE LOCATION OF WATER RIGHTS ONLY AND IS NOT INTENDED TO PROVIDE LEGAL DIMENSIONS OR LOCATIONS OF PROPERTY OWNERSHIP LINES.



Proposed Irrigation Pond
River Run Ranch
Crook County, Oregon

FIGURE

PROJECT NO. 1018-101

DATE: August 2006

DRAWN BY: S. Schenck

DESIGNED BY: J. Polvi

NEWTON CONSULTANTS INC.
Earth, Water and Rock Specialists
Ph: 541 504-9960
Fax: 541 504-9961

appno R- 86674