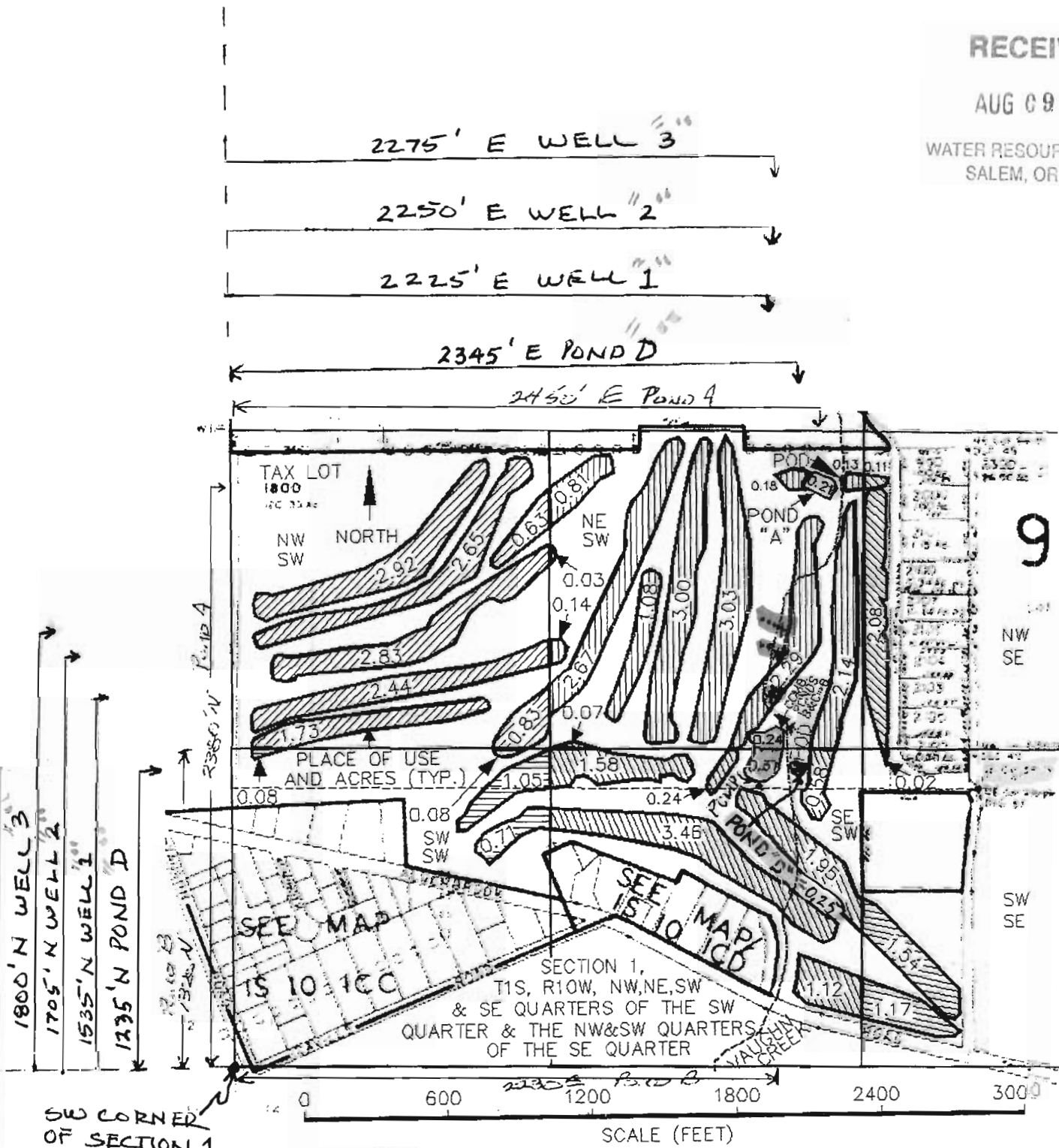


RECEIVED

AUG 09 2010

WATER RESOURCES DEPT  
SALEM, OREGON



SW CORNER OF SECTION 1

- \* POND "B" (OLD PONDS B & C COMBINED) LOCATION:  
930' W FROM SE COR, SMITH DLC 45  
1320' NORTH AND 2230' EAST FROM SW CORNER OF SECTION 1
- \* POND "A" LOCATION: LANDSCAPE USE  
2380' NORTH AND 2450' EAST FROM SW CORNER OF SECTION 1
- \* DIV. PTS LOCATIONS; CREEK - 1300' N & SSW;  
250' N & 850' WEST, ALL FROM SE COR  
SMITH DLC 45
- \* POND "D" LOCATION: 1235' NORTH & 2345' EAST FROM SW CORNER OF SECTION 1
- \* WELL 1 LOCATION: 1535' N. & 2225' E. FROM SW CORNER OF SECTION 1.
- \* WELL 2 LOCATION: 1705' N. & 2250' E. FROM SW CORNER OF SECTION 1.
- \* WELL 3 LOCATION: 1800' N. & 2275' E. FROM SW CORNER OF SECTION 1.