

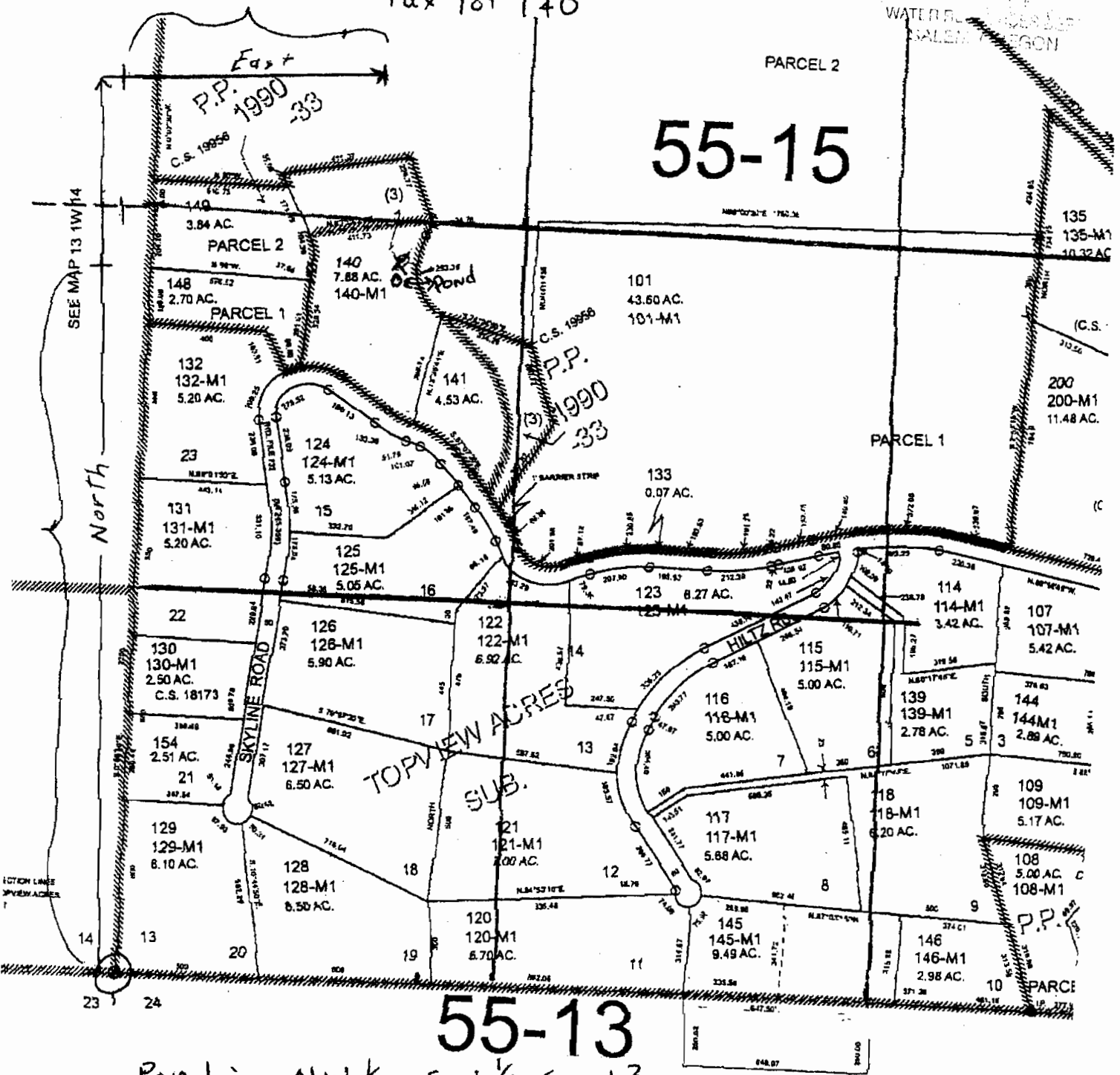
T13S, R1W, Sec. 13

tax lot 140

RECEIVED

JAN 10 2011

WATER RESOURCES DEPT  
SALEM, OREGON



55-13

Pond in NW 1/4, SW 1/4 Sec 13

2,469 ft. North and 4000 ft. East from SW Corner

SEE MAP 13 1W 24

RECEIVED

FEB 26 2010

WATER RESOURCES DEPT  
SALEM, OREGON

1" = 500'

\*N' measurement corrected  
See memo to file - mrm  
1/10/11

