



# Standard Reservoir Application Map for Bruce and Jeanne Strange

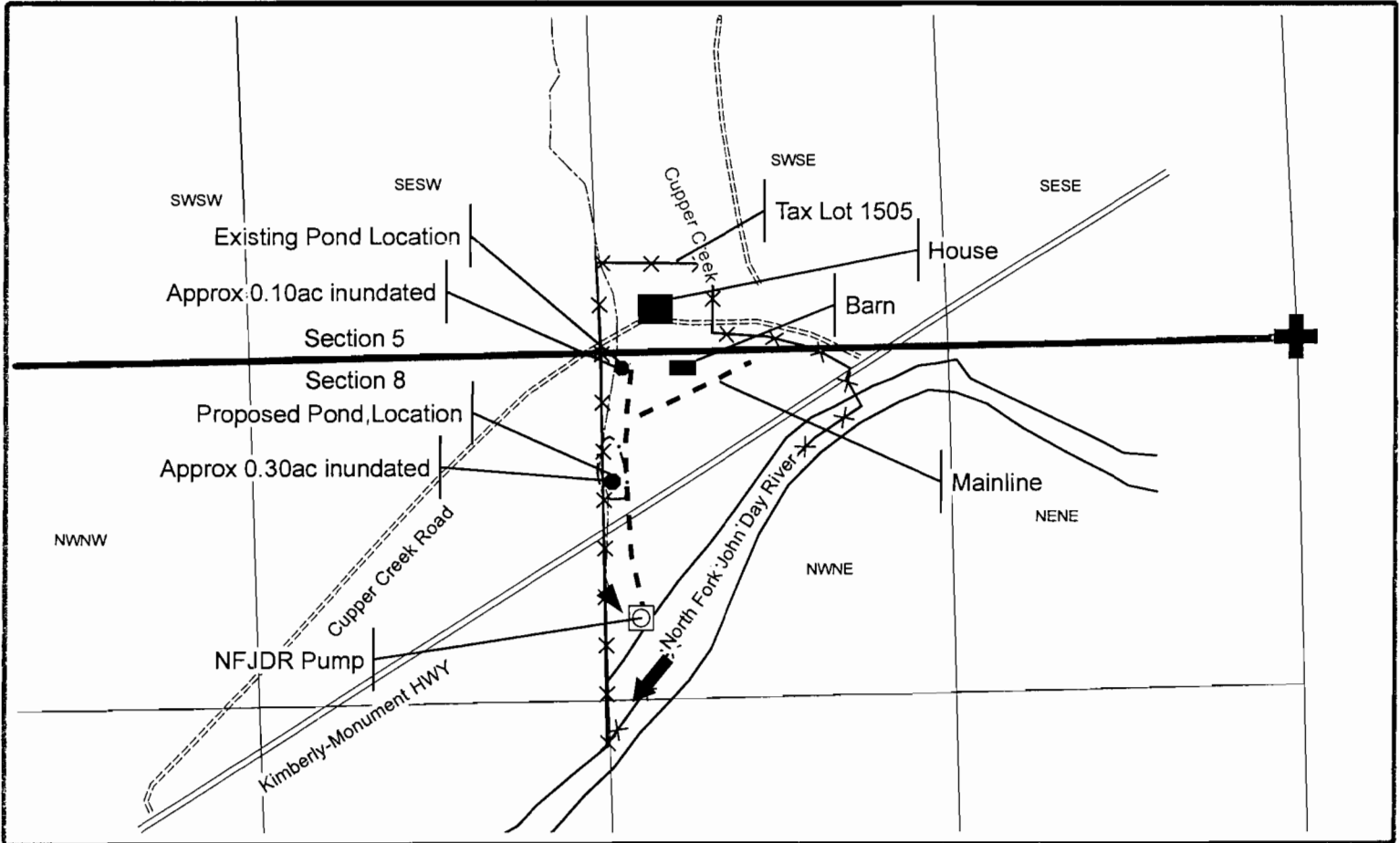
1 inch = 660 feet

RECEIVED

JAN 03 2011

WATER RESOURCES DEPT  
SALEM, OREGON

## T. 9S R. 27E Section 5 and 8



Existing Pond location is approximately 150 feet South and 2590 feet West of the NE corner of Section 8, T. 9S R. 27E W.M.  
Section 8 being within the NW NE section 8  
T. 9S R. 27E W.M.

~~Proposed Pond location is approximately 510 feet South and 2590 feet West of the NE corner of Section 8, T. 9S R. 27E W.M.  
Section 8 being within the NW NE section 8  
T. 9S R. 27E W.M.~~

Proposed NFJDR Pump location is approximately 1000 feet South and 150 feet East of the N 1/4 corner of Section 8, T. 9S R. 27E W.M.  
Section 8 being within the NW NE section 8  
T. 9S R. 27E W.M.