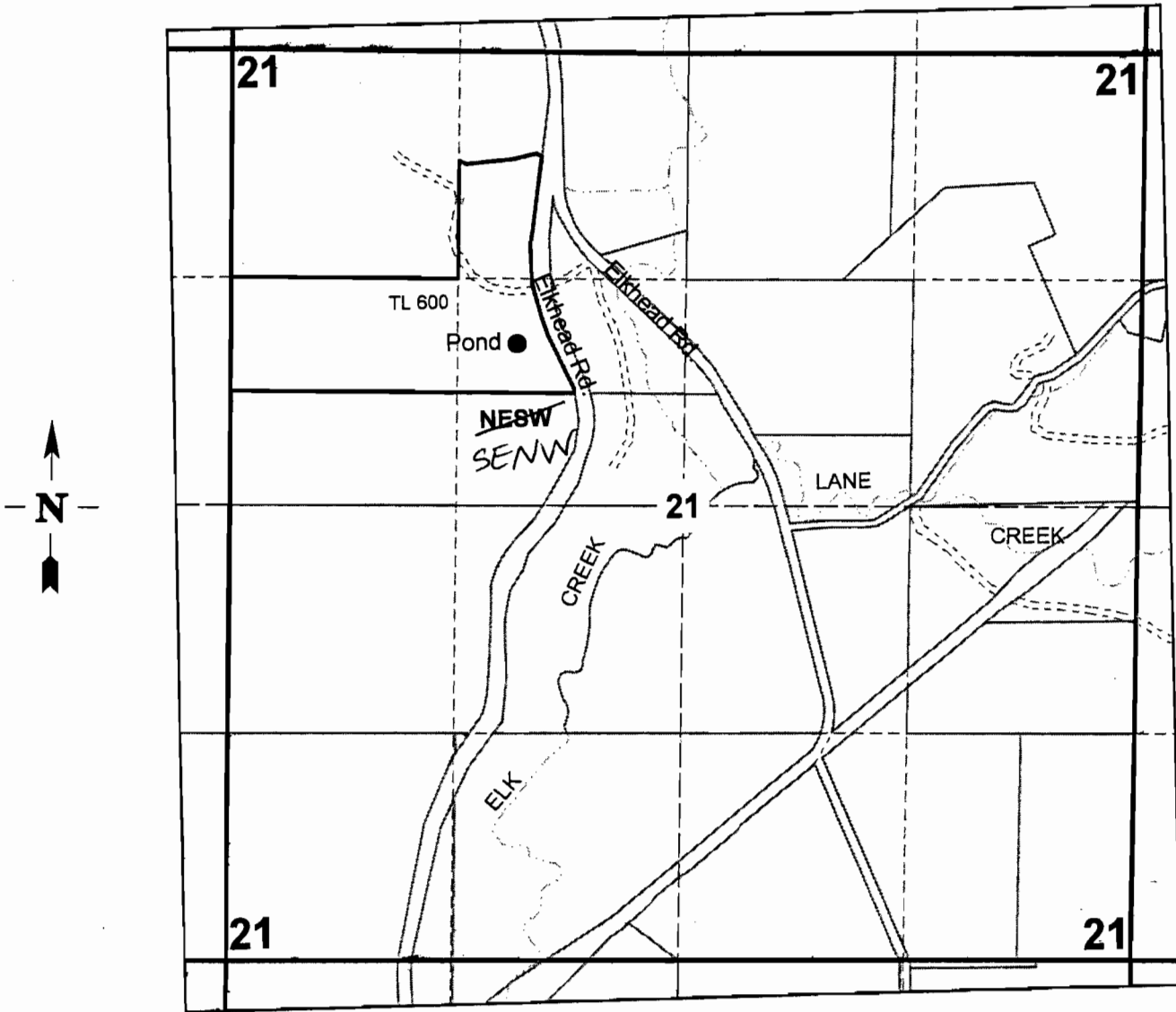


WORK COPY

SEC. 21 T. 23S. R. 4W. W.M.
DOUGLAS COUNTY
Scale 1" = 1000'



Pond is located 1700 ft. South and 1650 ft. East
from the NW corner of Section 21

RECEIVED

MAY 12 2010

WATER RESOURCES DEPT
SALEM, OREGON

R-87610