

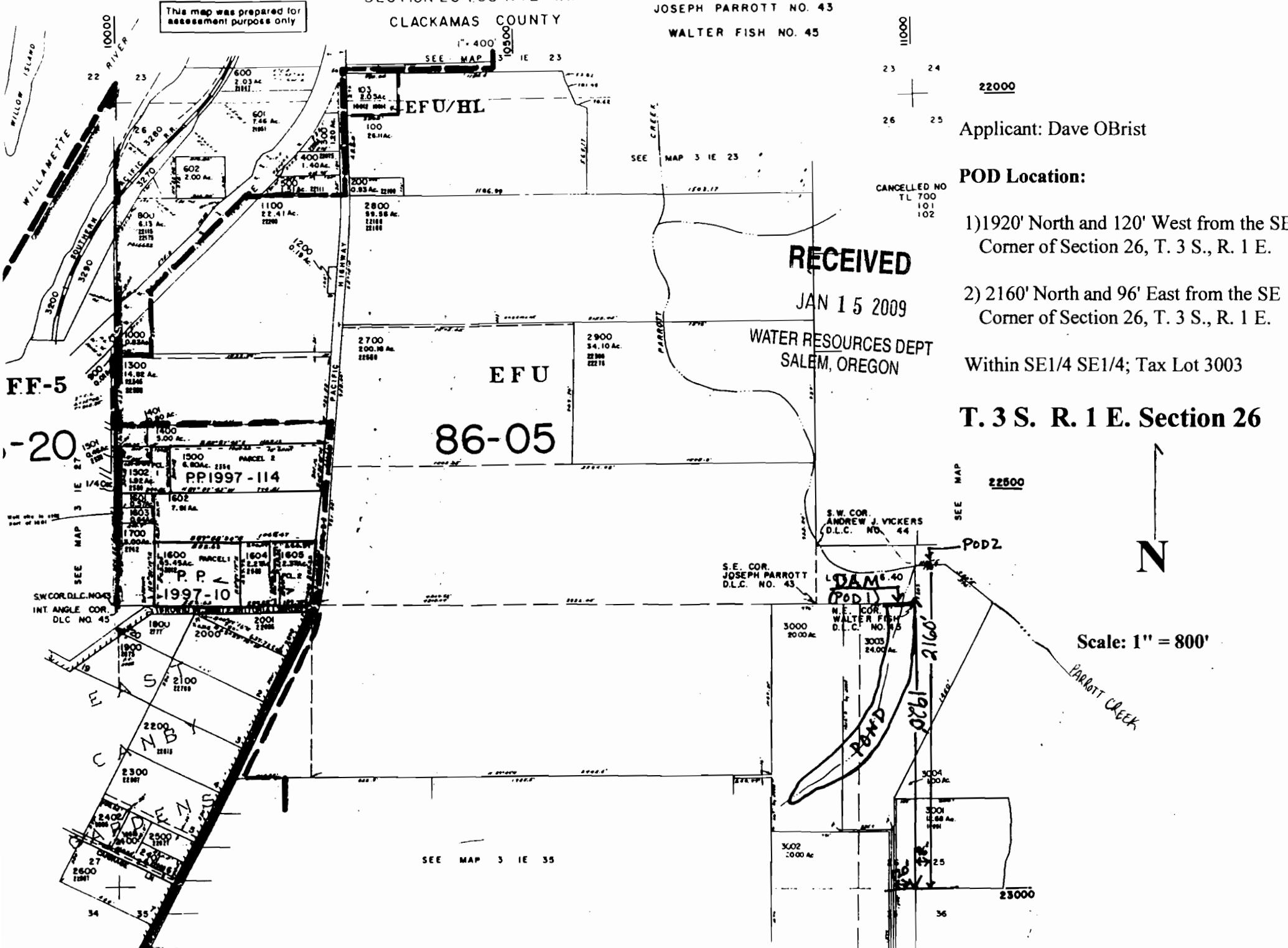
R-87376

SECTION 26 T.3S R.1E WM  
CLACKAMAS COUNTY

D.L.C.'S  
JOSEPH PARROTT NO. 43  
WALTER FISH NO. 45

3 1E 26

This map was prepared for  
assessment purposes only



Applicant: Dave OBrist

POD Location:

1) 1920' North and 120' West from the SE  
Corner of Section 26, T. 3 S., R. 1 E.

2) 2160' North and 96' East from the SE  
Corner of Section 26, T. 3 S., R. 1 E.

Within SE1/4 SE1/4; Tax Lot 3003

T. 3 S. R. 1 E. Section 26

RECEIVED

JAN 15 2009

WATER RESOURCES DEPT  
SALEM, OREGON



Scale: 1" = 800'

CANCELLED NO  
TL 700  
101  
102

SEE MAP 22500

SEE MAP

POD2

S.W. COR.  
ANDREW J. VICKERS  
D.L.C. NO. 44

S.E. COR.  
JOSEPH PARROTT  
D.L.C. NO. 43

DAM  
(POD1)

N.E. COR.  
WALTER FISH  
D.L.C. NO. 45

SEE MAP 3 1E 35