

R-87671

T38S, R3W, Sec. 32



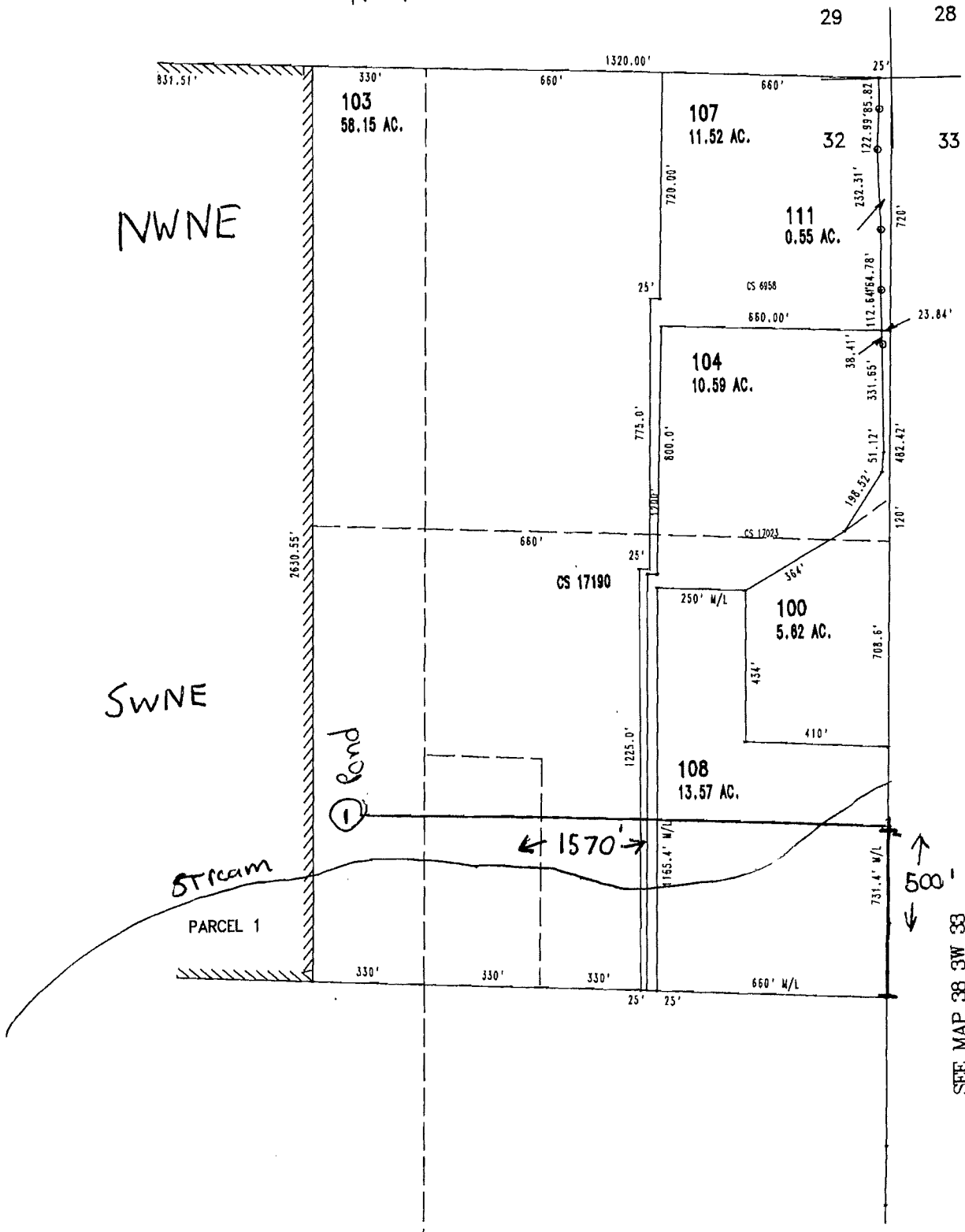
NWNE

SWNE

⊖ Pond

Stream

PARCEL 1



RECEIVED

DEC 06 2010

WATER RESOURCES DEPT
SALEM, OREGON

SEE MAP 38 SW 33

R-87671
R-14936

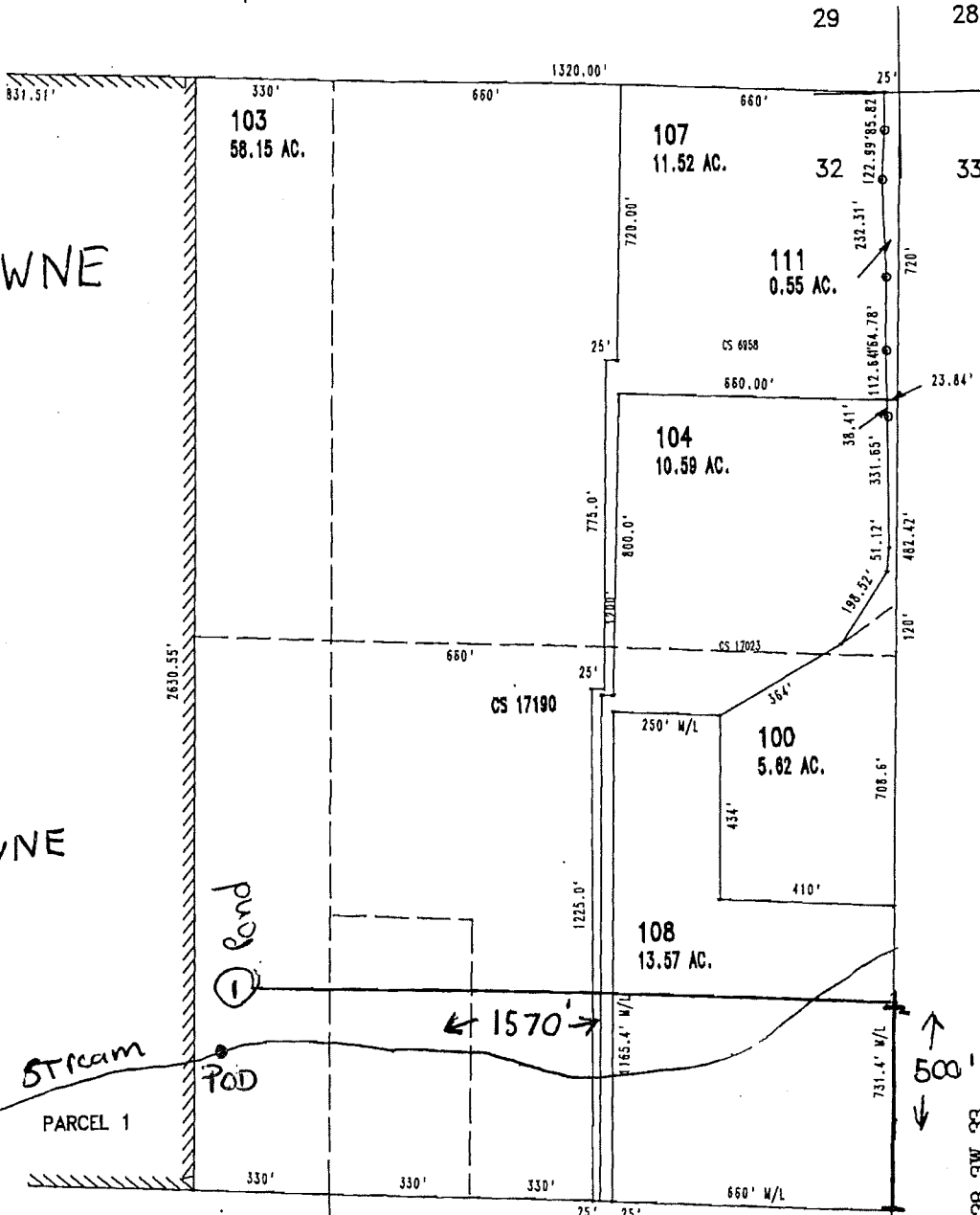
R-87671

T38S, R3W, Sec. 32

North

NWNE

SWNE



POD: SWNE, Sec 32,
 375ft N, and 1160ft W,
 from E 1/4 corner.

RECEIVED
 DEC 06 2010
 WATER RESOURCES DEPT
 SALEM, OREGON

RECEIVED
 NOV 21 2011
 WATER RESOURCES DEPT
 SALEM, OREGON

R-87671
 R14936

Map 2