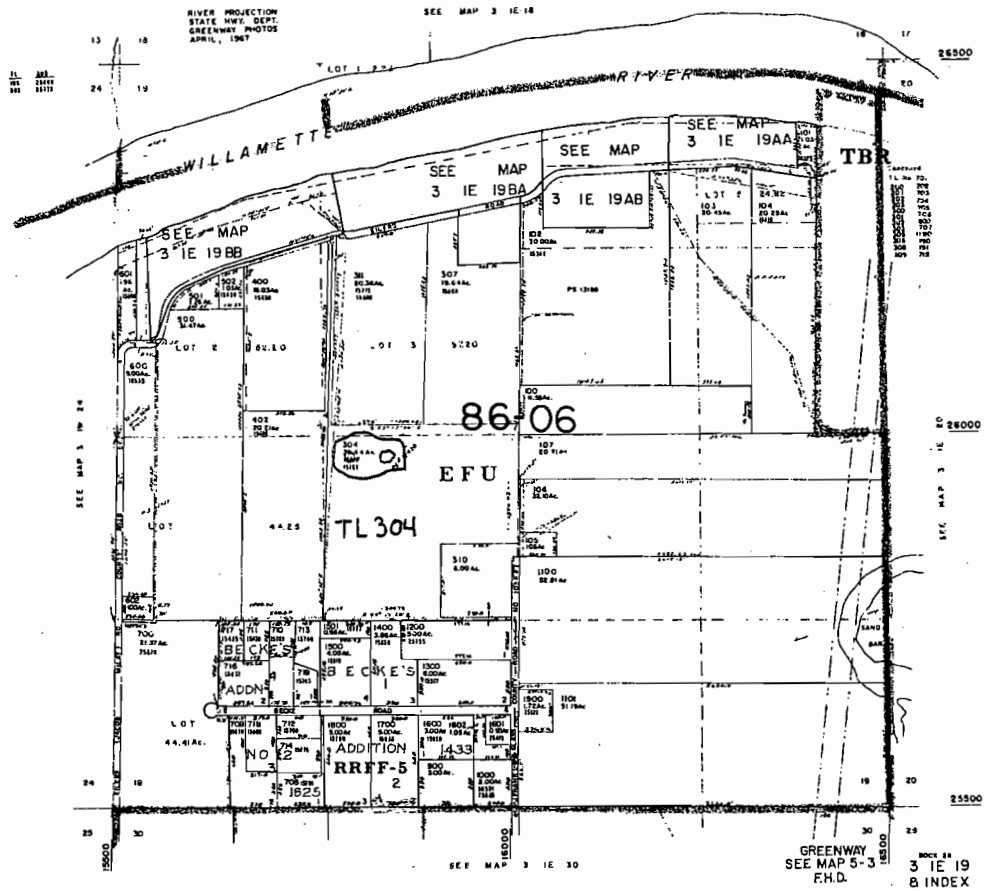


This map was prepared for assessment purpose only.

SECTION 19 T.3S. R.1E. W.M.  
LACKAMAS COUNTY  
P. 400'

3 1E 19  
B INDEX



Location:

3 S., 1 E., Section 19 Tax Lot 304

POD is 238' South and 792' West from  
Center of Section 19 in the NE 1/4, of the SW 1/4

Scale: 1 inch = 1320 feet *R-87708*

N

RECEIVED  
MAR 23 2011

WATER RESOURCES DEPT  
SALEM, OREGON