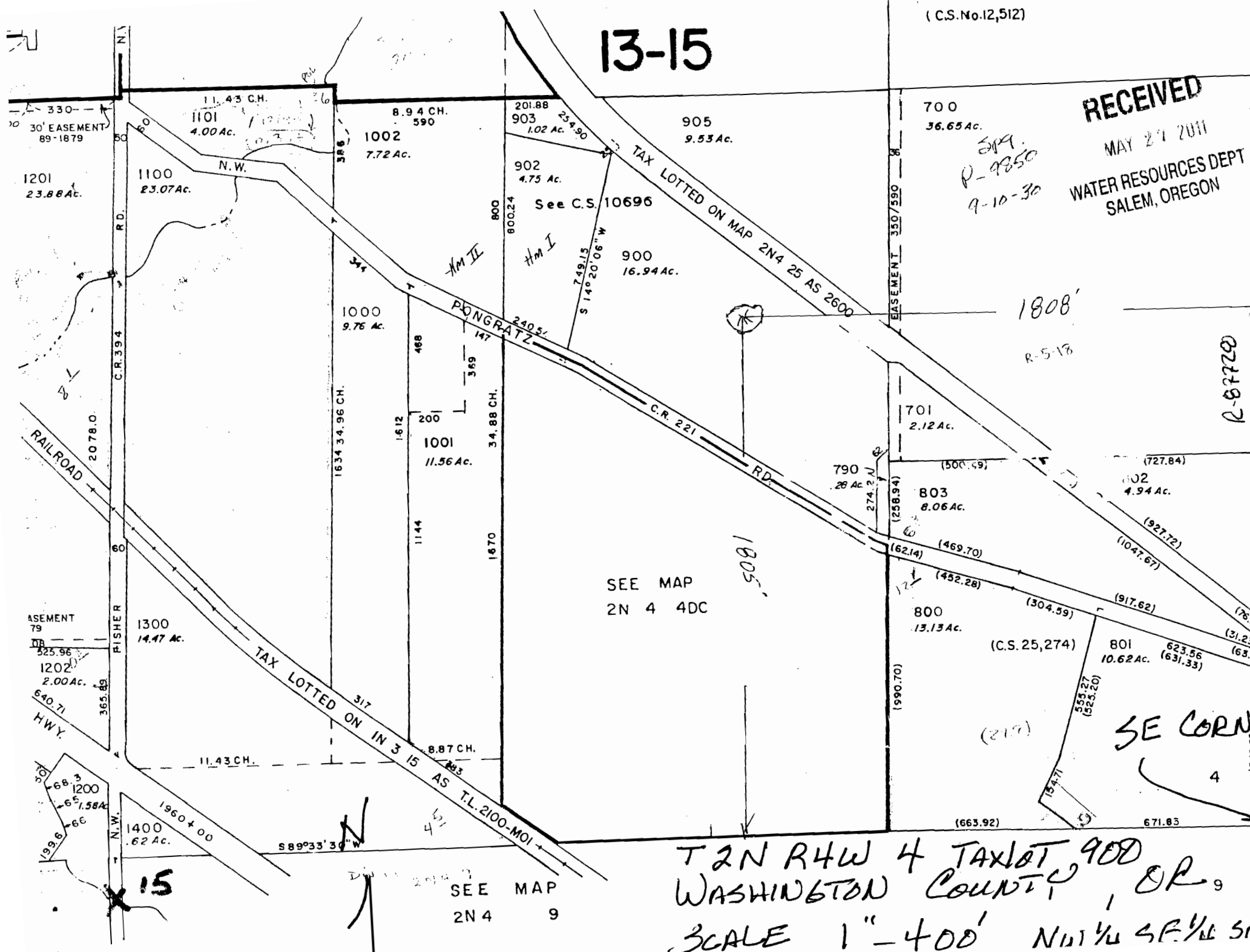


13-15

RECEIVED

MAY 27 2011
WATER RESOURCES DEPT
SALEM, OREGON

SPR.
P-9850
9-10-30



1808'
R-5-18

1805'

SEE MAP
2N 4 4DC

TAX LOTTED ON IN 3 15 AS T.L. 200-MOI

(C.S. 25,274)

SE CORN

T 2N R 4W 4 TAX LOT 900
WASHINGTON COUNTY, OR
SCALE 1" = 400' NUT 1/4 S.F. 1/4 S.F.

SEE MAP
2N 4 9

15