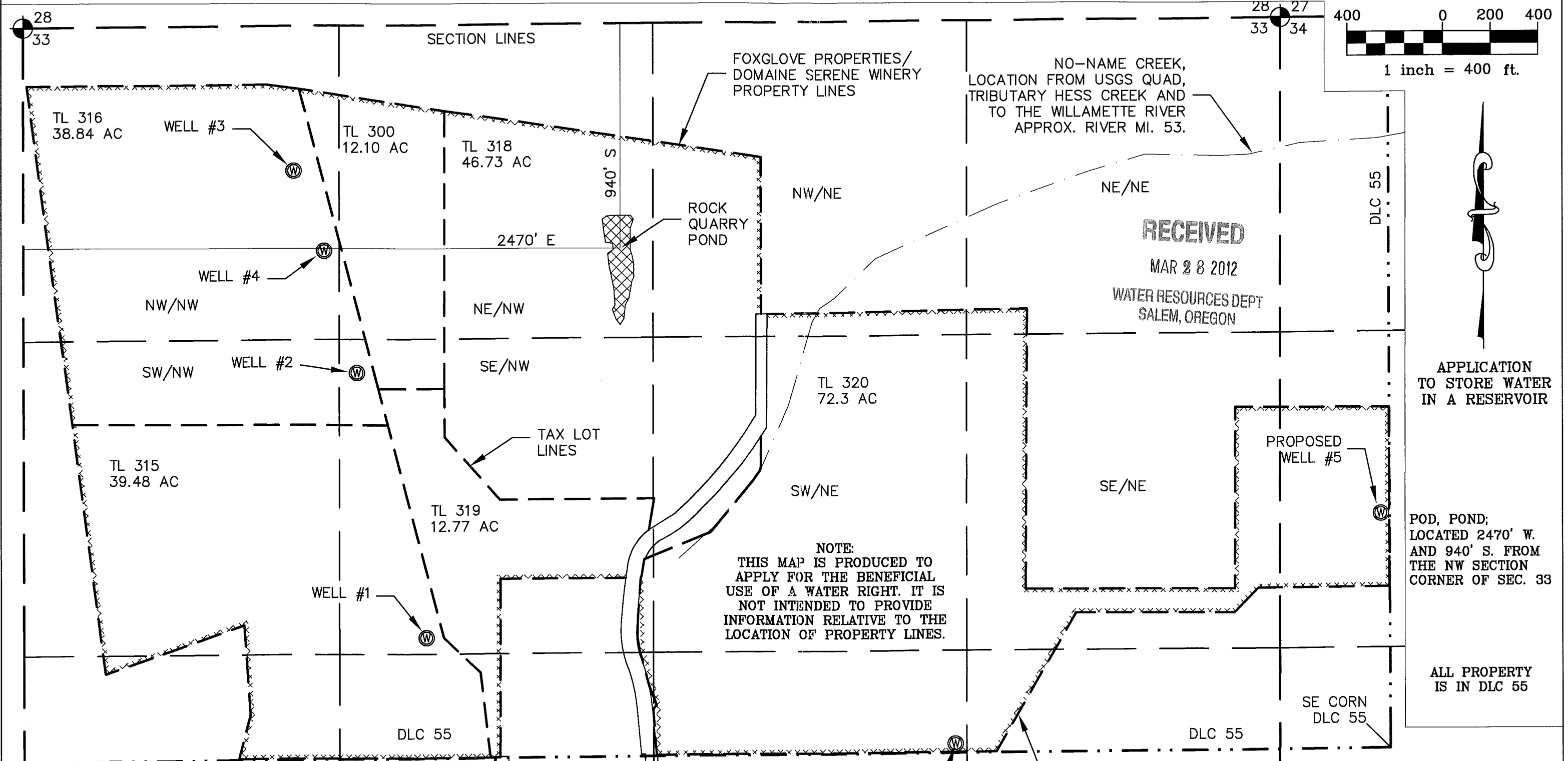


APPLICANT:
FOXGLOVE PROPERTIES, LLP -
DOMAINE SERENE VINEYARDS & WINERY

CONTACT: OPERATIONS &
FACILITIES SUPERINTENDANT,
RICHARD RAMAKERS 503-864-4600/238

POND APPLICATION MAP

LOCATION: T3S, R3W, SEC. 33, NE/NW, TAXLOT 318.
WILLAMETTE MERIDIAN, YAMHILL COUNTY. DLC 55



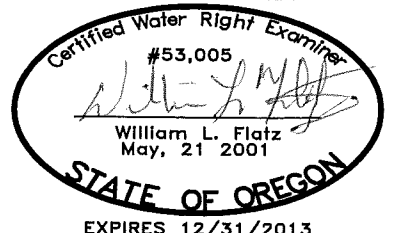
NOTE:
THIS MAP IS PRODUCED TO
APPLY FOR THE BENEFICIAL
USE OF A WATER RIGHT. IT IS
NOT INTENDED TO PROVIDE
INFORMATION RELATIVE TO THE
LOCATION OF PROPERTY LINES.

APPLICATION
TO STORE WATER
IN A RESERVOIR

POD, POND;
LOCATED 2470' W.
AND 940' S. FROM
THE NW SECTION
CORNER OF SEC. 33

ALL PROPERTY
IS IN DLC 55

STUNTZNER ENGINEERING
2137 19TH AVENUE
FOREST GROVE, OR 97116
503-357-5717



MAP BASED ON:
TAX MAP: 3-3-33
USGS DUNDEE QUAD MAP

JOB No.: 309-2-054
REVISED: 2-14-12
DRAWING NAME:
DOMAINE SERENE POND APPLICATION

NO-NAME CREEK HEADWATER
LOCATION FROM USGS QUAD,
TRIBUTARY TO THE
WILLAMETTE RIVER
APPROX. RIVER MI. 54.

R-9779