

THIS MAP WAS PREPARED FOR
ASSESSMENT PURPOSE ONLY

SECTION 28 T5S R4W W.M.
YAMHILL COUNTY

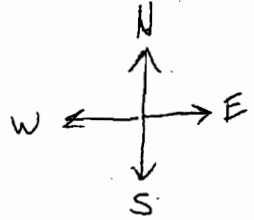
5 4 28

20 21
29 28

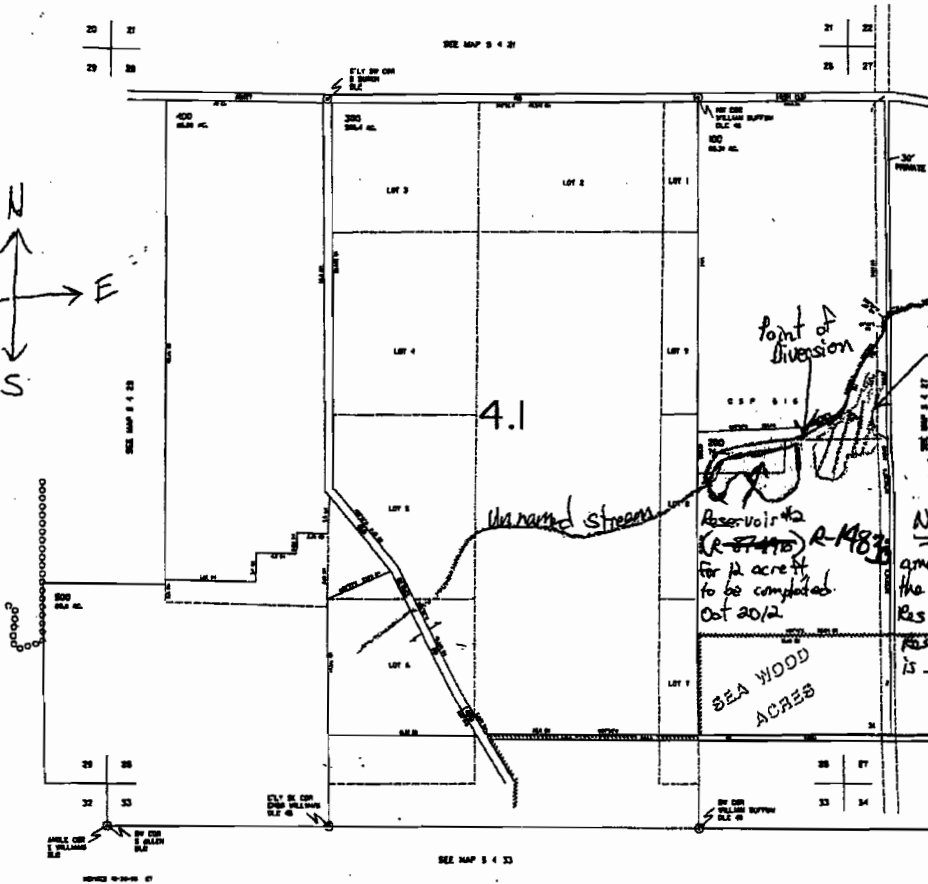
SEE MAP 5 4 21

21 22
29 27

CANCELLED
481
482



1" = 1320'



5 4 28

RECEIVED

APR 23 2012

WATER RESOURCES DEPT
SALEM, OREGON

RECEIVED

JUN 21 2012

WATER RESOURCES DEPT
SALEM, OREGON