

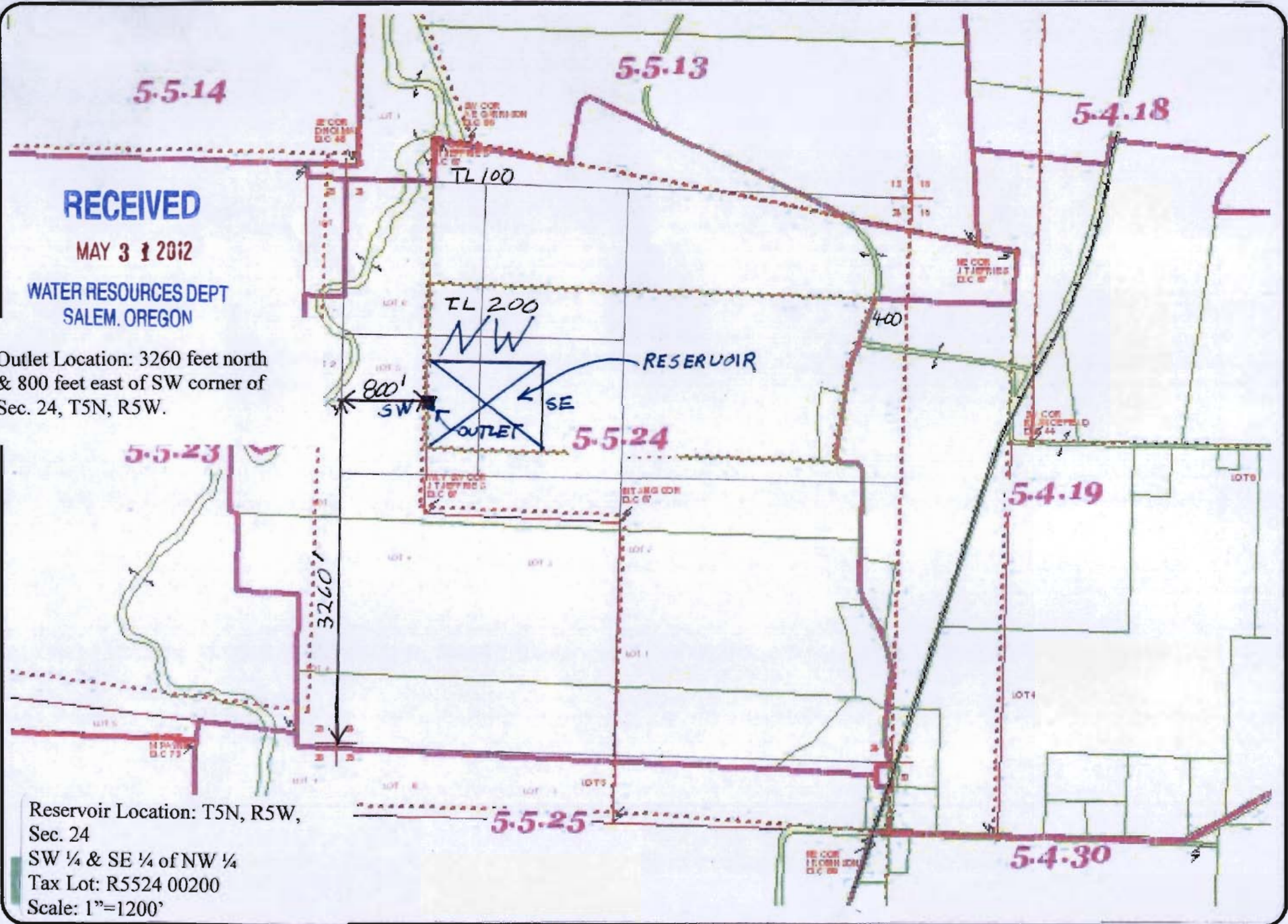
**RECEIVED**

**MAY 3 1 2012**

**WATER RESOURCES DEPT  
SALEM, OREGON**

Outlet Location: 3260 feet north  
& 800 feet east of SW corner of  
Sec. 24, T5N, R5W.

R- 87812



Reservoir Location: T5N, R5W,  
Sec. 24  
SW ¼ & SE ¼ of NW ¼  
Tax Lot: R5524 00200  
Scale: 1"=1200'

Map

This map was produced using the Yamhill County GIS data. The GIS data is maintained by the county to support its governmental activities. The county is not responsible for map errors, omissions, misuse or misinterpretation

Printed 05/04/2012

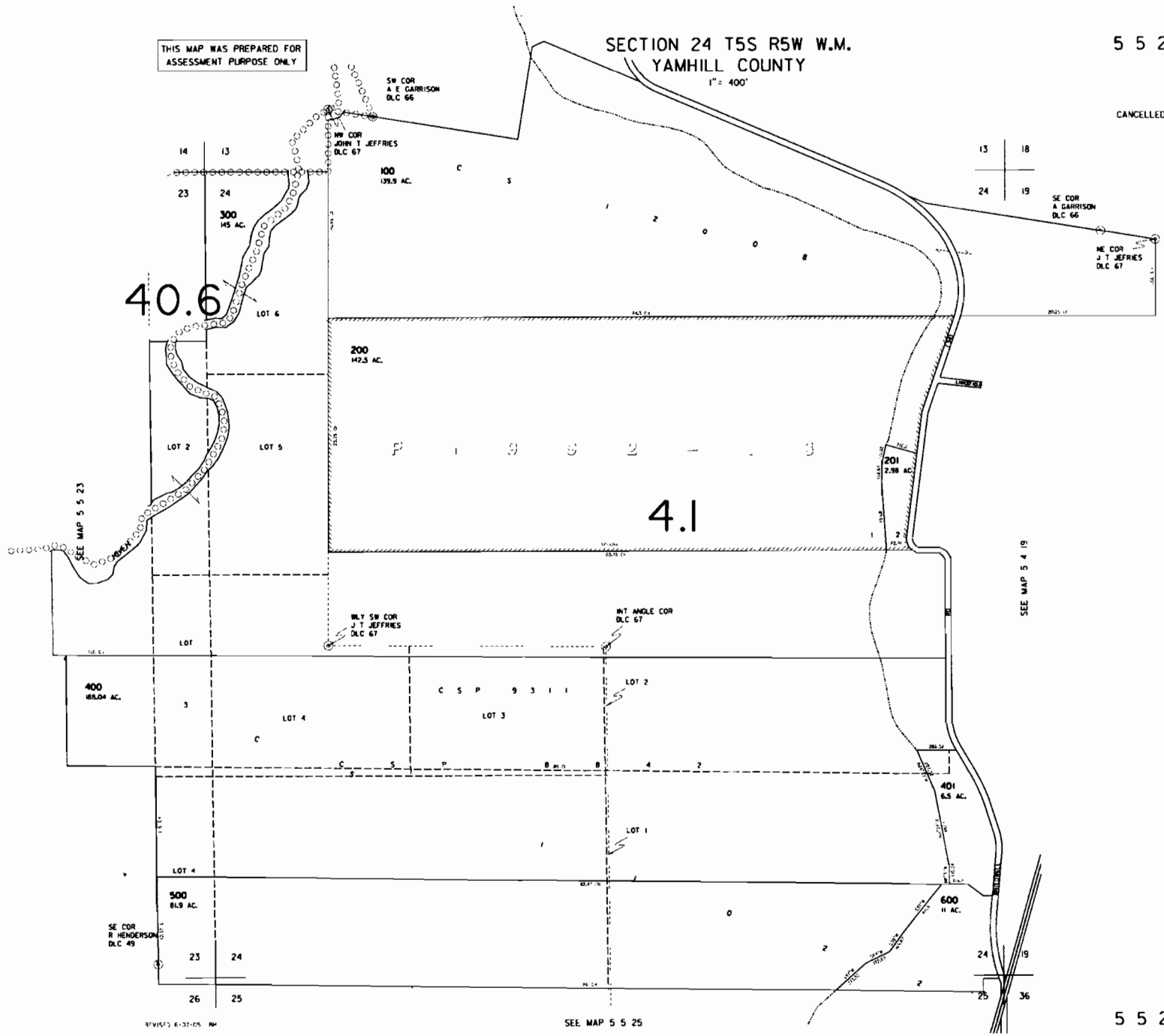


THIS MAP WAS PREPARED FOR  
ASSESSMENT PURPOSE ONLY

SECTION 24 T5S R5W W.M.  
YAMHILL COUNTY  
1" = 400'

5 5 24

CANCELLED



5 5 24