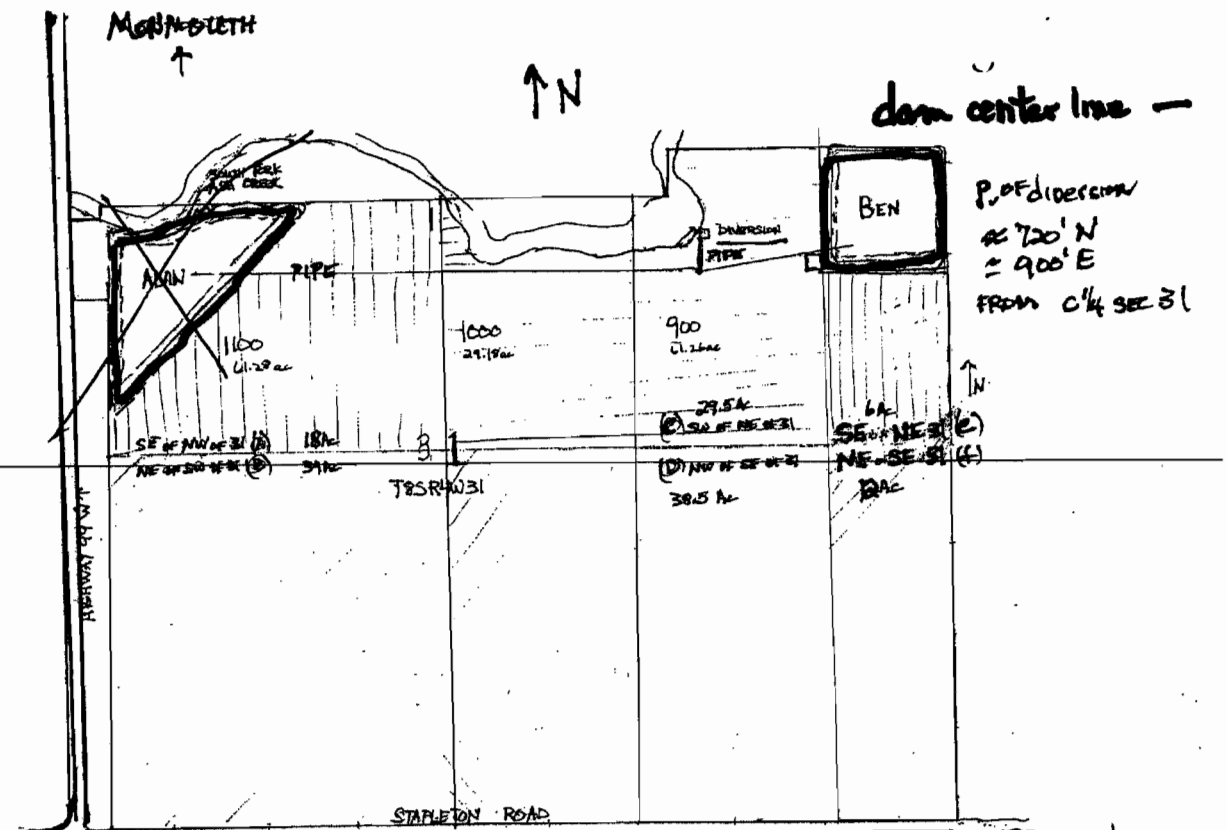


Revised map

- Alan West - UNDER CONSTRUCTION NOW (9/26/12)
- ~~— Alan East - PENDING, SUBJECT TO PERMITTING FROM POLK COUNTY RE FLOOD PLAIN AND RIPARIAN SET BACKS~~

RECEIVED
 SEP 26 2012
 WATER RESOURCES DEPT
 SALEM, OREGON



P.O.F. direction
 ≈ 700' N
 ≈ 900' E
 FROM C¹/₄ SEC 31

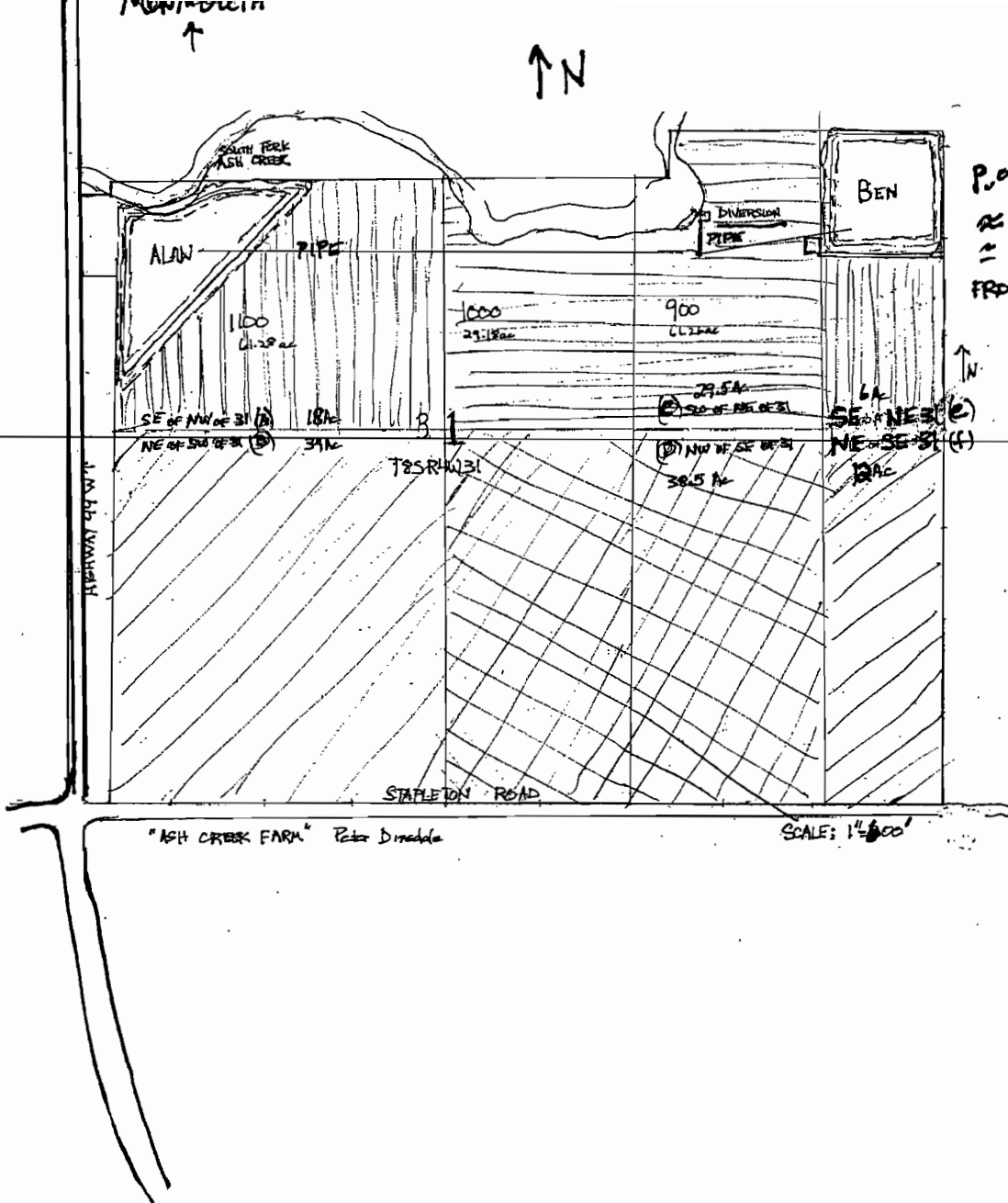
"ASH CREEK FARM" Peter Dimadala

ROADWAY not to scale

~~Alam - SW CORNER ≈ 225' N
 ≈ 1130' W
 FROM C¹/₄ SEC 31~~

1330'
 Ben - SW CORNER ≈ 1330' E
 ≈ 670' N
 FROM C¹/₄ SEC 31

RECEIVED
 APR 12 2012
 WATER RESOURCES DEPT
 SALEM, OREGON



P.O.F. DIVERSION
 ≈ 720' N
 ≈ 900' E
 FROM C¹/₄ SEC 31

"ASH CREEK FARM" Peter Dimmick

SCALE: 1" = 500'

RECEIVED
 APR 05 2012
 WATER RESOURCES DEPT
 SALEM, OREGON

R-87793