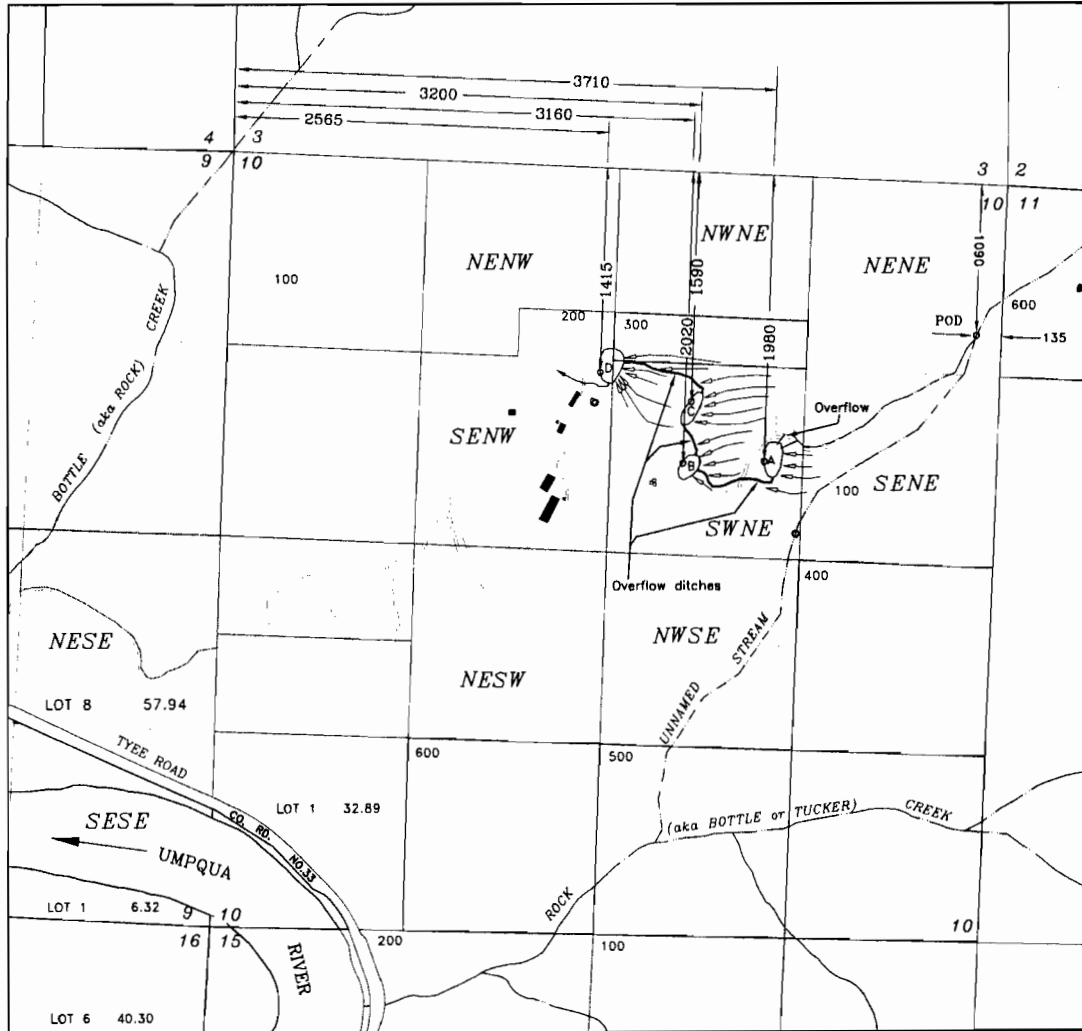


APPLICATION TO STORE WATER
 IN 4 RESERVOIRS IN THE NAME OF:
 KIRPAL LIGHT SATSANG, INC.
 TOWNSHIP 25 SOUTH, RANGE 7 WEST, W.M.
 DOUGLAS COUNTY OREGON

RECEIVED

NOV 22 2011

WATER RESOURCES DEPT
 SALEM, OREGON



USE OF WATER - MULTI-PURPOSE

Scale
 1 inch = 1320 feet

A Reservoir identification

o Location of outlets in reservoirs & pod for Unnamed Stream

For purpose of locating POD's & outlets, perpendicular directions are referenced from points of beginning (NW & NE COR Section 10) extending along section boundary lines

Runoff - No Channel

Reservoirs are connected via overflow ditches & pipelines so that water collected in upper reservoirs drains to lower reservoirs

This map is not intended to provide legal dimensions or locations of property ownership lines

Base Map: Douglas County GIS
 2005 FSA Aerial Photos
 USGS Quadrangle

JORDAN ENGINEERING
 460 JORDAN LANE
 ROSEBURG, OR 97471
 (541) 673-1931

7/28/2011 n.e.d.

R-87768