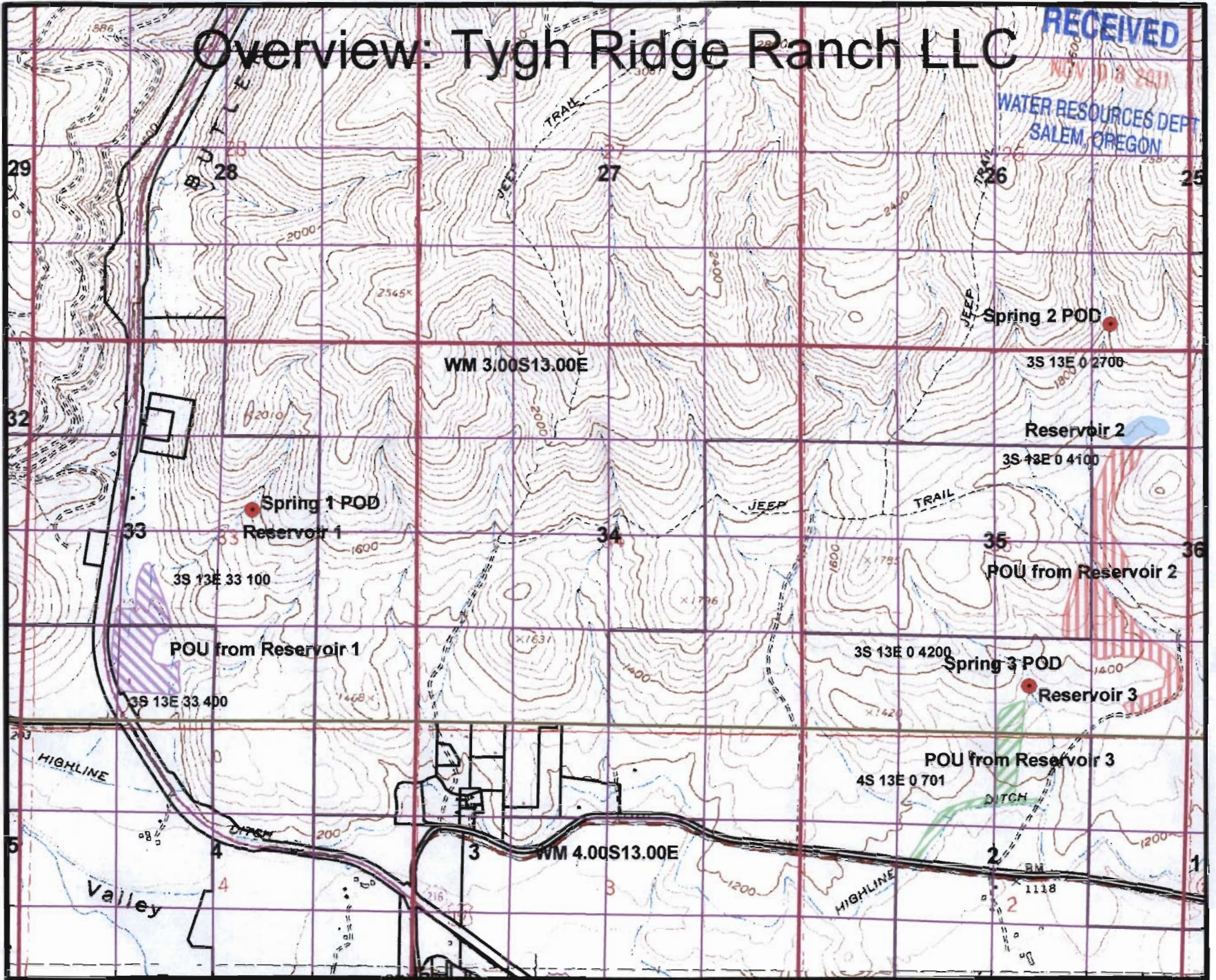


Overview: Tygh Ridge Ranch LLC

RECEIVED

NOV 13 2011
WATER RESOURCES DEPT
SALEM, OREGON



R-87763

0 1,300 2,600 5,200 Feet

Davis: T3S R13E Sec 33 Tax Lots 100 and 400

RECEIVED

NOV 03 2011

WATER RESOURCES DEPT
SALEM, OREGON

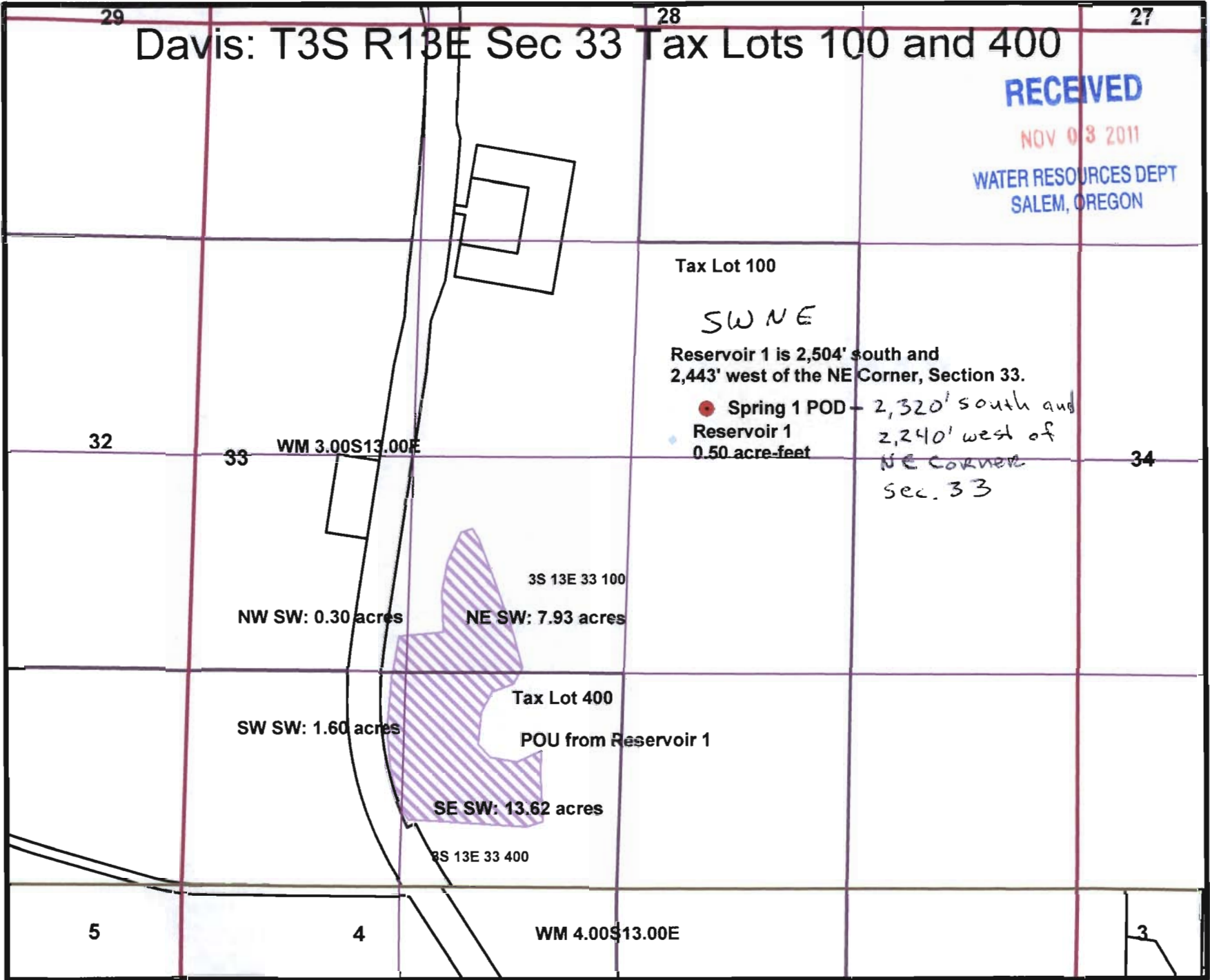


Tax Lot 100

SW NE

Reservoir 1 is 2,504' south and
2,443' west of the NE Corner, Section 33.

- Spring 1 POD - 2,320' south and
2,240' west of
NE corner
Sec. 33
- Reservoir 1
0.50 acre-feet



Scale: 1" = 800'

R-87763

Davis: T3S R13E 0 Tax Lots 2700, 4100, 4200

27

T4S R13E 0 Tax Lots 500, 701

25



RECEIVED

NOV 03 2011

WATER RESOURCES DEPT
SALEM, OREGON

Spring 2 POD: Diversion is 351' North and
1,104' West of SE Corner Sec 26, T3S R13E WM

Reservoir 2: Centerpoint of dam is 1,221' south and
937' west of the NE Corner, Section 35, T3S R13E WM

SE SE
Spring 2 POD

3S 13E 0 2700

NE NE

Reservoir 2

WM 3.00S13.00E

3S 13E 0 4100

SE NE: 11.4 acres

34

35

POU from Reservoir 2

36

Spring 3 POD: Diversion is 652' North and
2,226' West of SE Corner Sec 35, T3S R13E WM

Reservoir : Reservoir is 436' North and
2,174' West of the SE Corner, Section 35, T3S R13E WM

NW SE: 7 acres

NE SE: 14.0 acres

3S 13E 0 4200

Spring 3 POD

SE SE: 12.5 acres

Reservoir 3

SW SE: 3.33 acres

POU from Reservoir 3

4S 13E 0 701

NW NE: 8.14 acres

NE NW: 2.85 acres

3

2

WM 4.00S13.00E

SE NW: 2.19 acres

1

4S 13E 0 500

SW NE
POU for Domestic

R-87763

Scale: 1" = 1320'