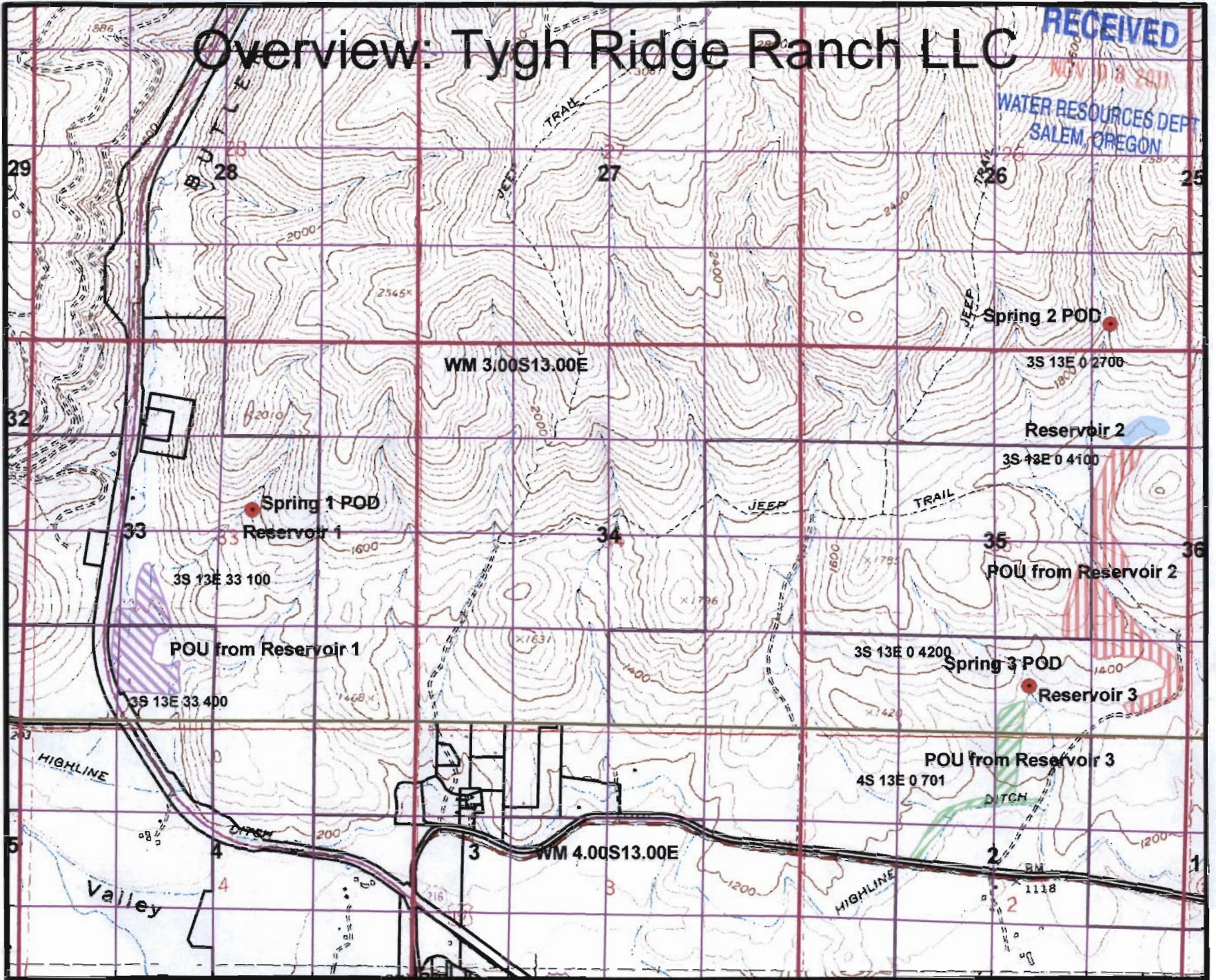


# Overview: Tygh Ridge Ranch LLC

RECEIVED

NOV 13 2011  
WATER RESOURCES DEPT  
SALEM, OREGON



R-87763





Davis: T3S R13E Sec 33 Tax Lots 100 and 400

RECEIVED

NOV 03 2011

WATER RESOURCES DEPT  
SALEM, OREGON



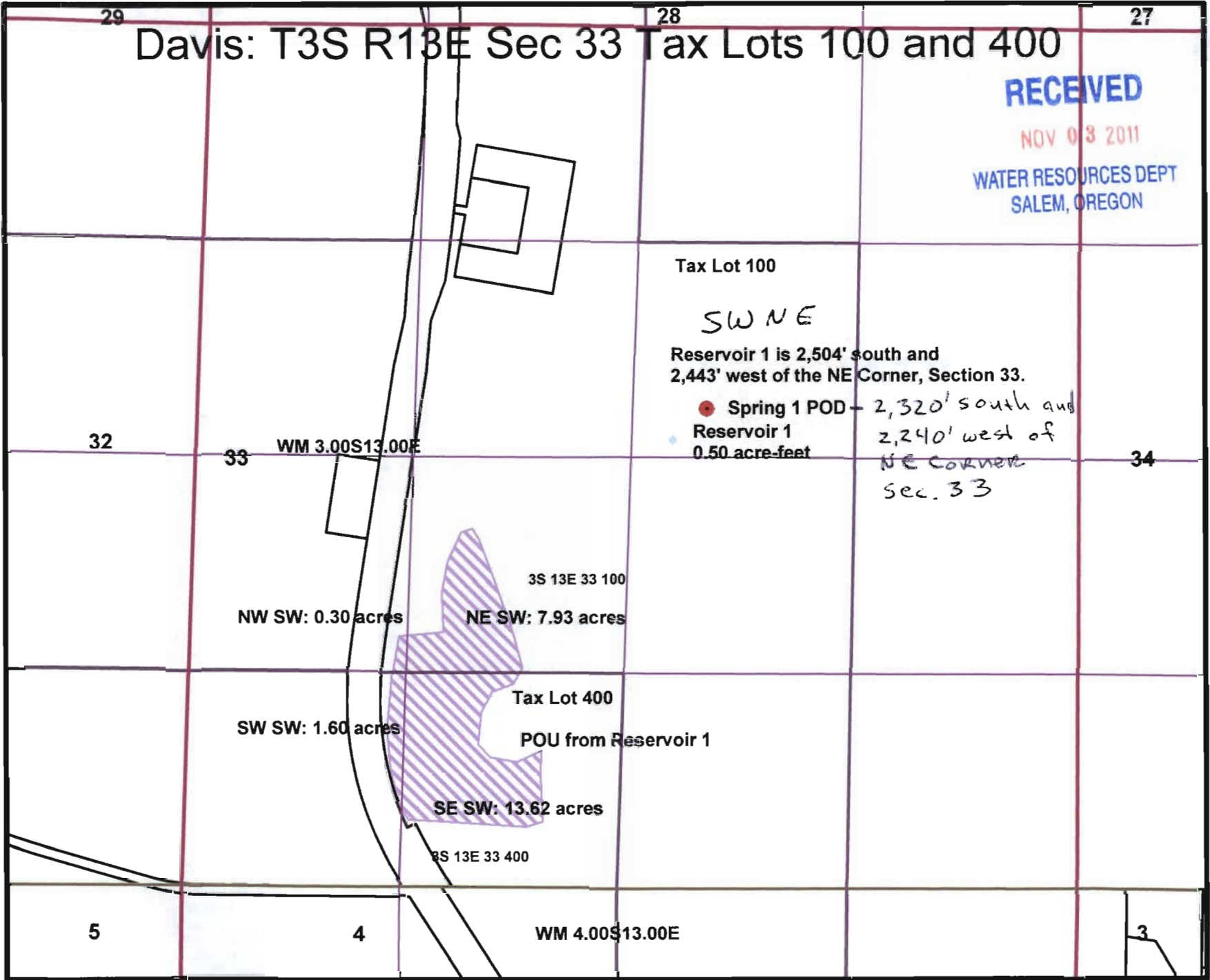
Tax Lot 100

SW NE

Reservoir 1 is 2,504' south and  
2,443' west of the NE Corner, Section 33.

- Spring 1 POD - 2,320' south and  
Reservoir 1 2,240' west of  
NE corner  
0.50 acre-feet

Sec. 33



R-87763

Scale: 1" = 800'

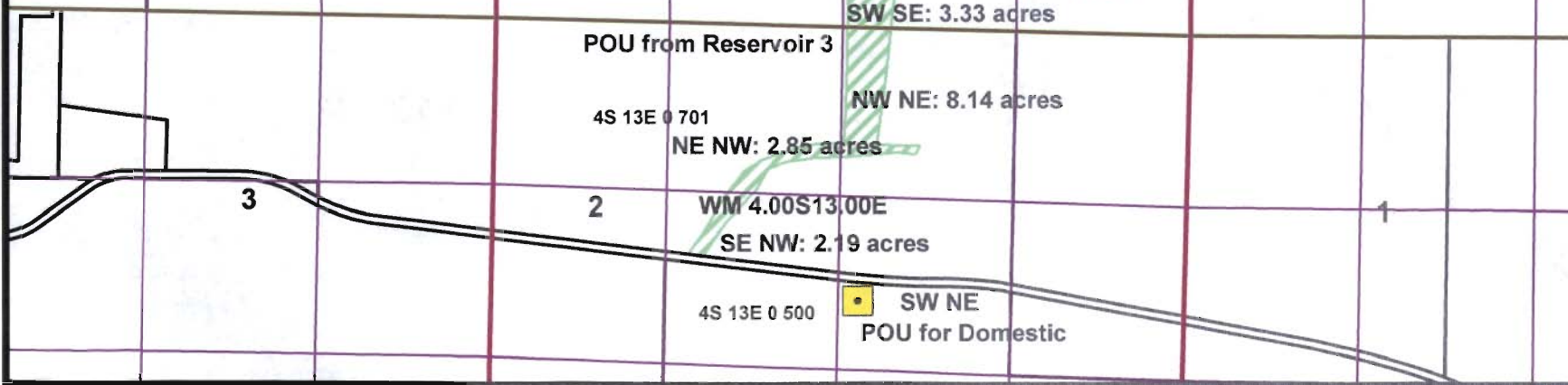
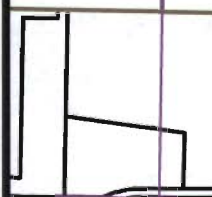
Davis: T3S R13E 0 Tax Lots 2700, 4100, 4200  
 T4S R13E 0 Tax Lots 500, 701



**RECEIVED**  
 NOV 03 2011  
 WATER RESOURCES DEPT  
 SALEM, OREGON

Spring 2 POD: Diversion is 351' North and  
 1,104' West of SE Corner Sec 26, T3S R13E WM  
 Reservoir 2: Centerpoint of dam is 1,221' south and  
 937' west of the NE Corner, Section 35, T3S R13E WM

Spring 3 POD: Diversion is 652' North and  
 2,226' West of SE Corner Sec 35, T3S R13E WM  
 Reservoir 3: Reservoir is 436' North and  
 2,174' West of the SE Corner, Section 35, T3S R13E WM



R-87763

Scale: 1" = 1320'