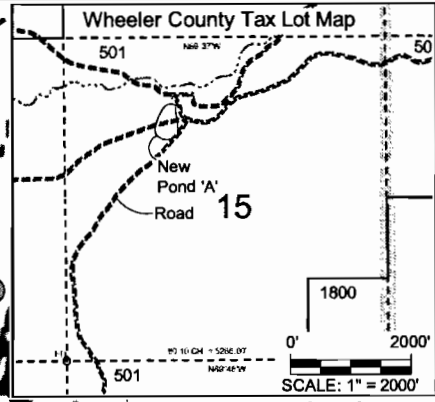
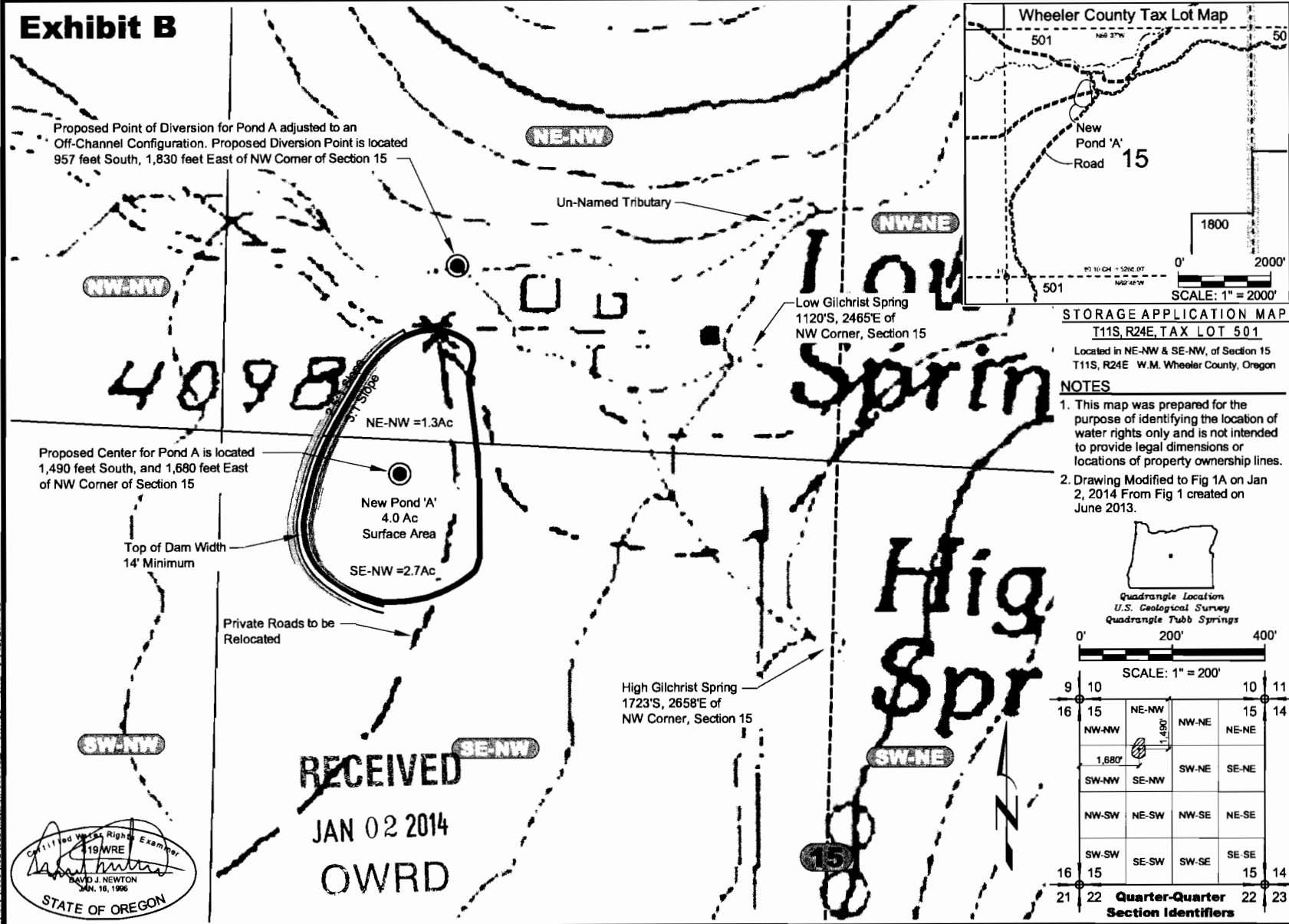


Exhibit B

Proposed Point of Diversion for Pond A adjusted to an Off-Channel Configuration. Proposed Diversion Point is located 957 feet South, 1,830 feet East of NW Corner of Section 15

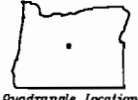


STORAGE APPLICATION MAP
T11S, R24E, TAX LOT 501

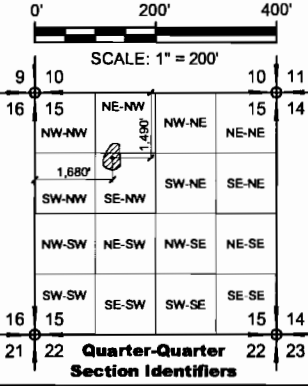
Located in NE-NW & SE-NW, of Section 15
 T11S, R24E W.M. Wheeler County, Oregon

NOTES

1. This map was prepared for the purpose of identifying the location of water rights only and is not intended to provide legal dimensions or locations of property ownership lines.
2. Drawing Modified to Fig 1A on Jan 2, 2014 From Fig 1 created on June 2013.



Quadrangle Location
 U.S. Geological Survey
 Quadrangle Tubb Springs



Proposed Center for Pond A is located 1,490 feet South, and 1,680 feet East of NW Corner of Section 15

Top of Dam Width
 14' Minimum

Private Roads to be Relocated

New Pond 'A'
 4.0 Ac
 Surface Area

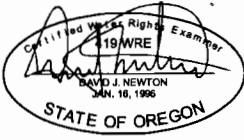
SE-NW = 2.7Ac

NE-NW = 1.3Ac

High Gilchrist Spring
 1723'S, 2658'E of
 NW Corner, Section 15

Low Gilchrist Spring
 1120'S, 2465'E of
 NW Corner, Section 15

RECEIVED
 JAN 02 2014
OWRD



Pond 'A' - Storage Application Map - R87489
 Addition of Point of Diversion
 4-DSD, LLC
 Waterman Flat, Wheeler County, Oregon



G:\0090_1063\102\Kerr\Water\W0063102_F1_storage_106-12_01/02/2014.dwg