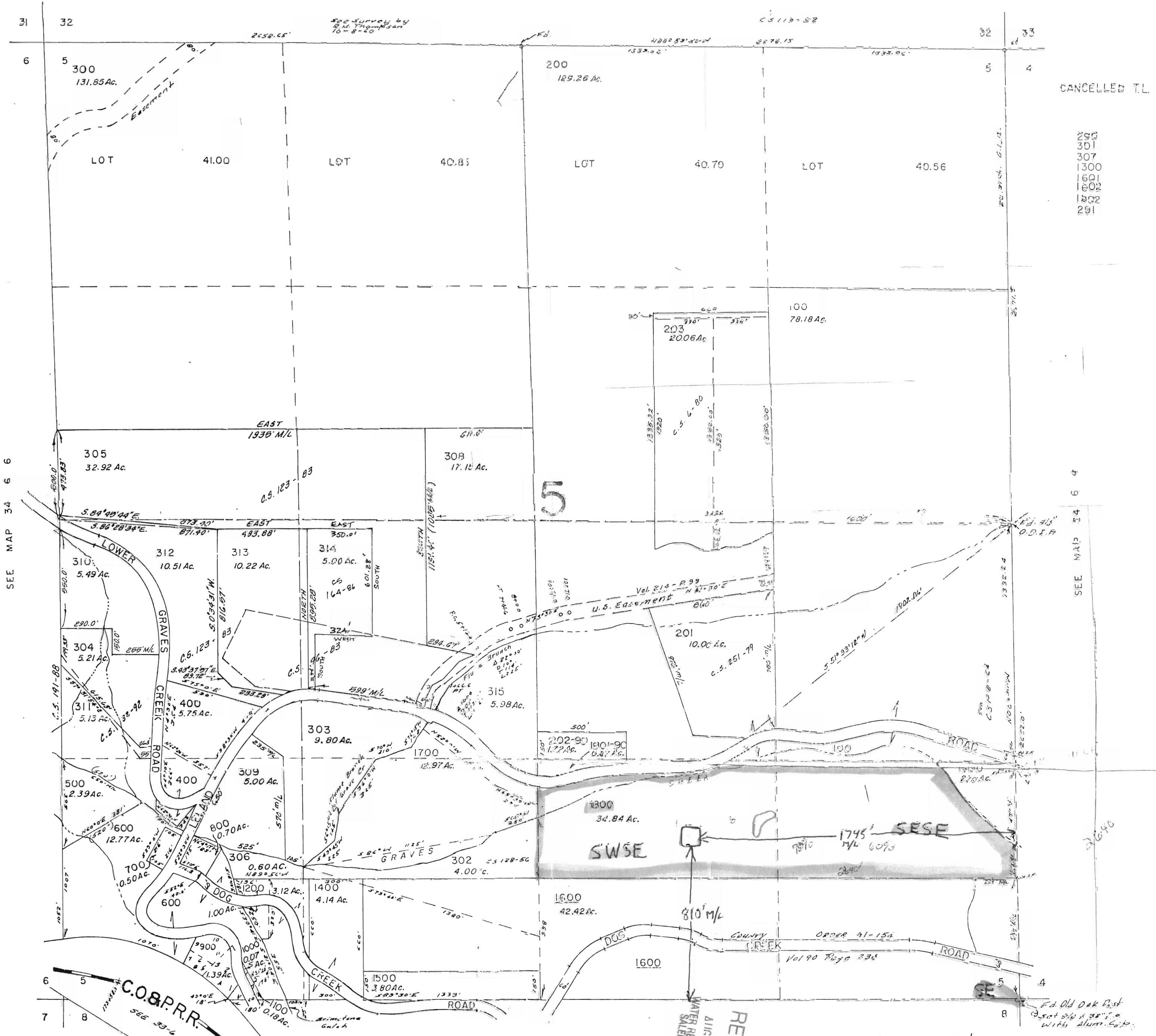


JOSEPHINE COUNTY

Scale 1" = 400'

SEE MAP 33 6 32

This map was prepared for assessment purpose only.



CANCELLED T.L.

- 290
- 301
- 307
- 1300
- 1601
- 1602
- 1602
- 291

Pond "2"  
 810' N x 1745' W  
 Square Pond  
 of SE Corner

RECEIVED  
 AUG 14 20  
 WATER RESOURCES  
 SALEM, OREGON

2525 Leland Rd.  
 Sunny Valley, OR.

SEE MAP 34 6 8

SEE MAP 34 6 6

SEE MAP 34 6 4

T.L. 900  
 1 N31°30'E  
 2 N31°40'E

C.O.B.P.R.R.  
 SEE 33-6 T.1500-30