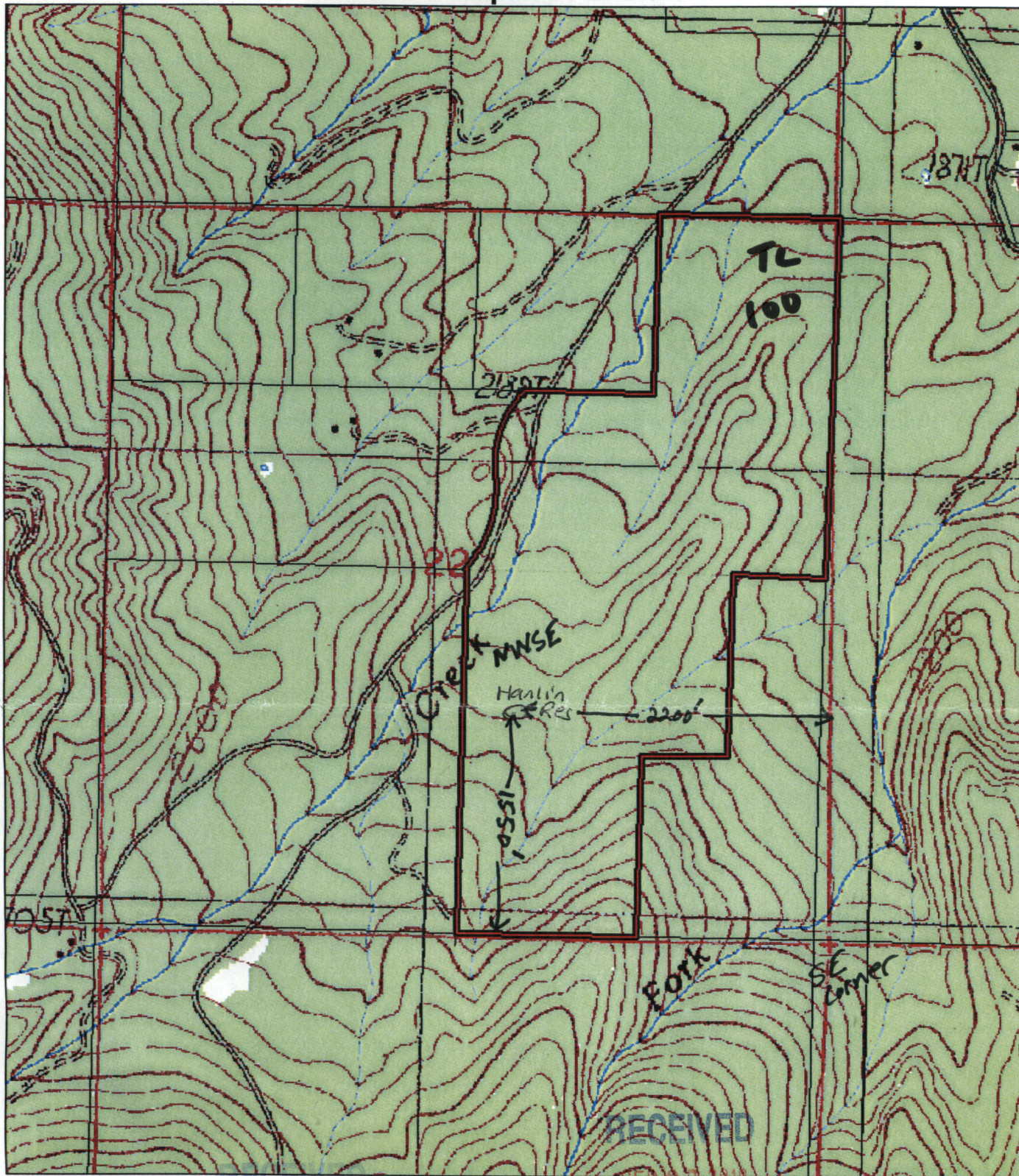



Assessor's Map 39-05-22 tl 100



Legend

-  Taxlots
- 2005 aeriels
- USGS 1:24000 Quads

RECEIVED  
AUG 27 2010

WATER RESOURCES DEPT  
SALEM, OREGON

The information on this map is furnished for general  
inquiries purposes only. This information is provided  
without warranties of any kind, express or implied,  
and it should not be used to support any purchase or  
other transaction. Neither Josephine County, Gas  
Junction, nor Oregon Dept of Geology & Mineral  
Industries will accept responsibility for any errors or  
inaccuracies in the depicted information.



Creation date: Monday, July 19, 2010 C:\ucocg\pima\pima.apr

WATER RESOURCES DEPT  
SALEM, OREGON



Scale  
1:12000



1 inch = 1000'

Locator Map



R-87655-ALT

Pond is 2200' west and 1550' north of SE corner  
39-5-22 in the NWSE QUARTER